



Harvest Water Capital Program Delivery



WaterReuse Meeting

Central Valley/Sierra Foothills Chapter

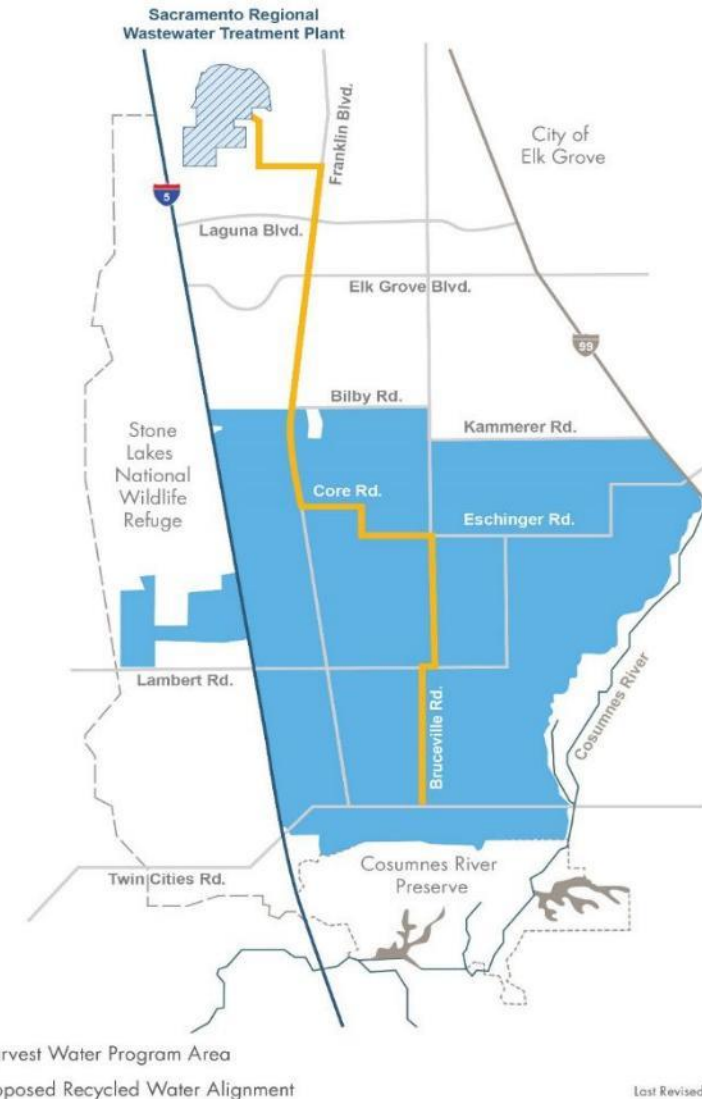
Mike Crooks, Deputy Director of Operations

June 5, 2026



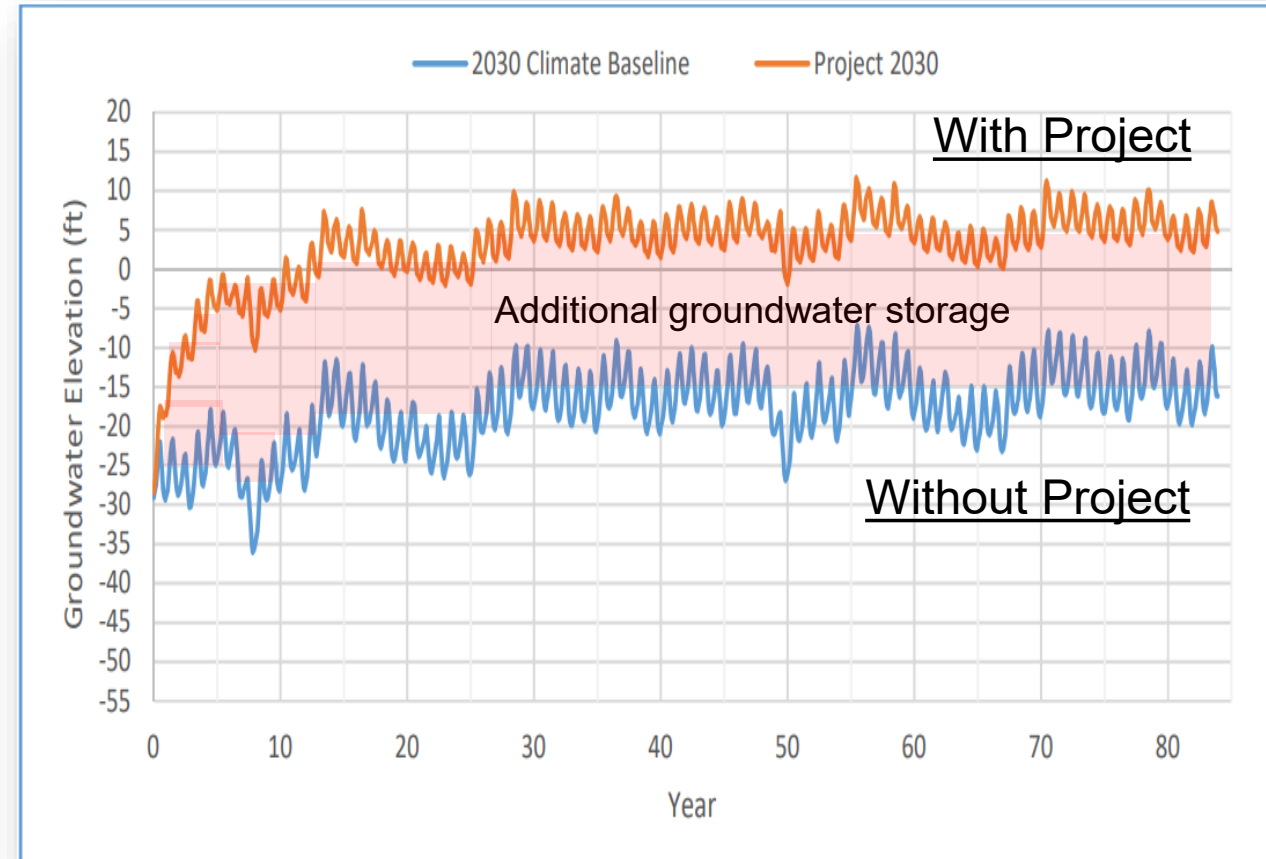
Harvest Water – California is investing in a water storage project that:

- Delivers up to 50,000 AFY of recycled water to over 16,000 acres of ag and habitat land
- Produces multiple public benefits including:
 - Groundwater restoration
 - Ecosystem improvements for habitat enhancement
 - Water quality improvements
 - Drought and climate change resiliency
- Provides conjunctive use for the region and qualifies for full CA WSIP grant funding
 - Current award set at **\$364.8 Million**



Recycled Water In-lieu Recharge Creates Significant Groundwater Benefits

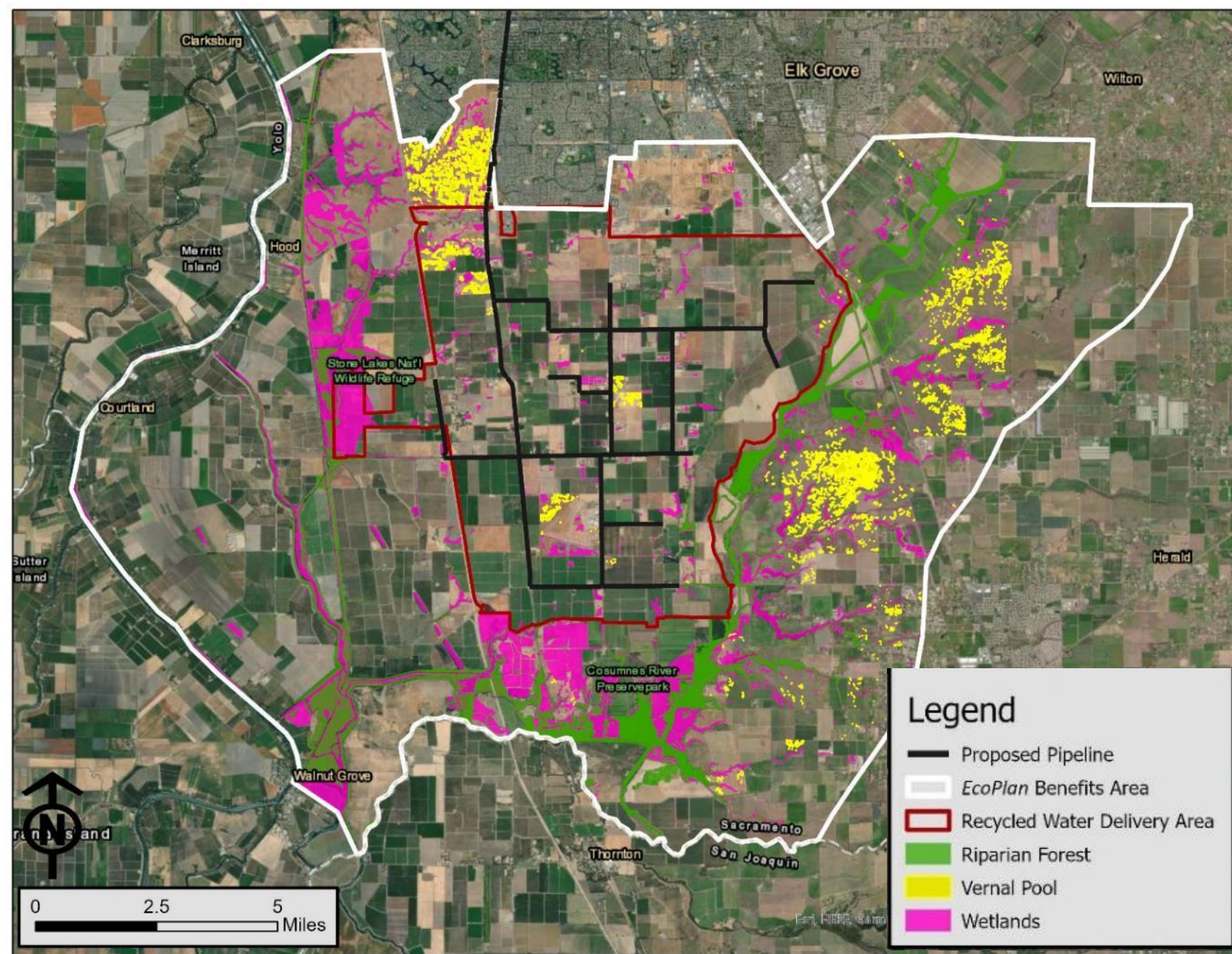
- Restores groundwater levels up to 35 feet within 15 years
- Increases groundwater in storage by approx. 370,000 AF
- Improves regional water supply sustainability



EcoPlan Benefits Area Boundary

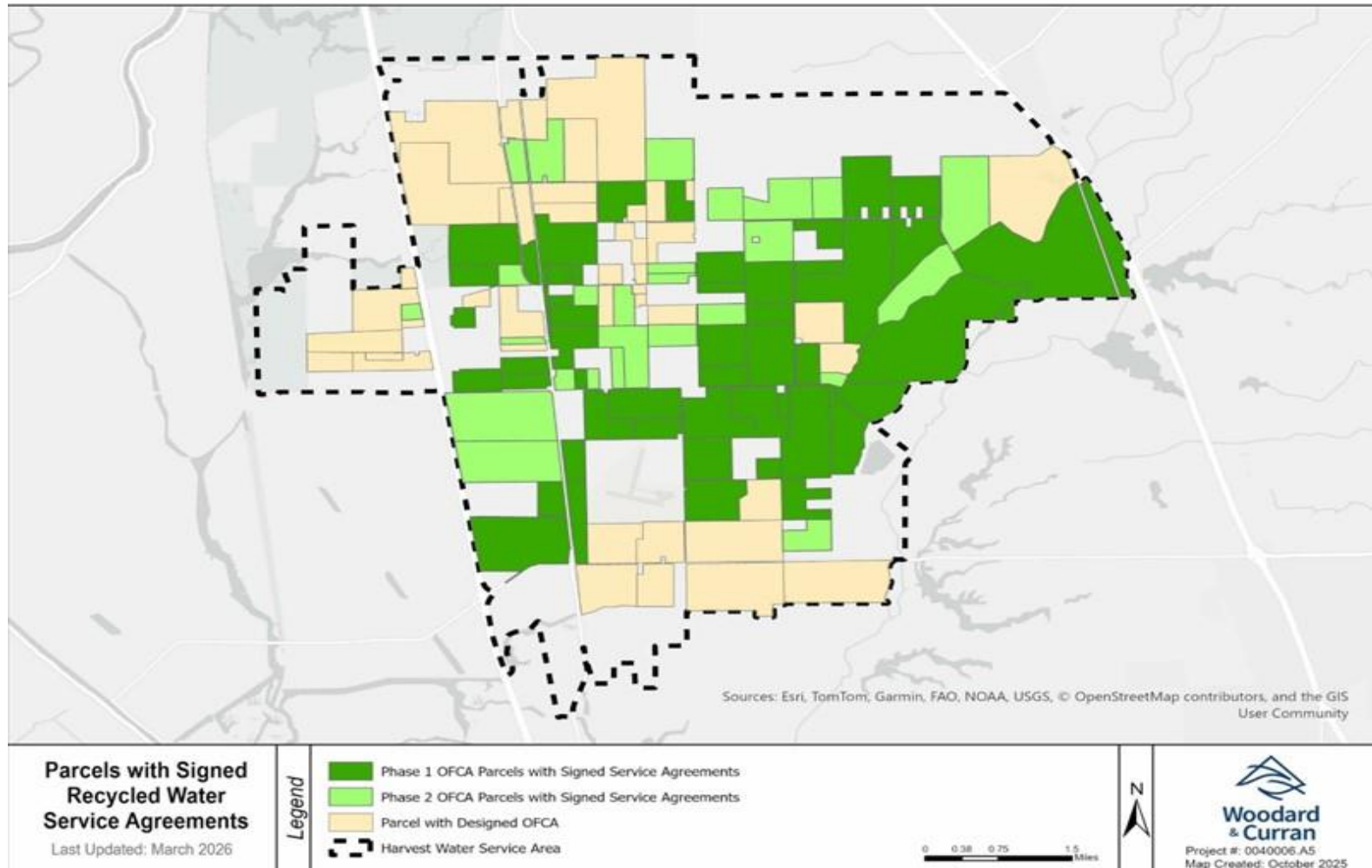
Groundwater and
Ecosystem
Improvements Extend
Beyond Recycled
Water Delivery Area

White area indicates
where GW elevation
improvements of 5 or
more feet expected



91 Connections with Service Agreements Signed or Close-to-Signed as of May 31, 2026

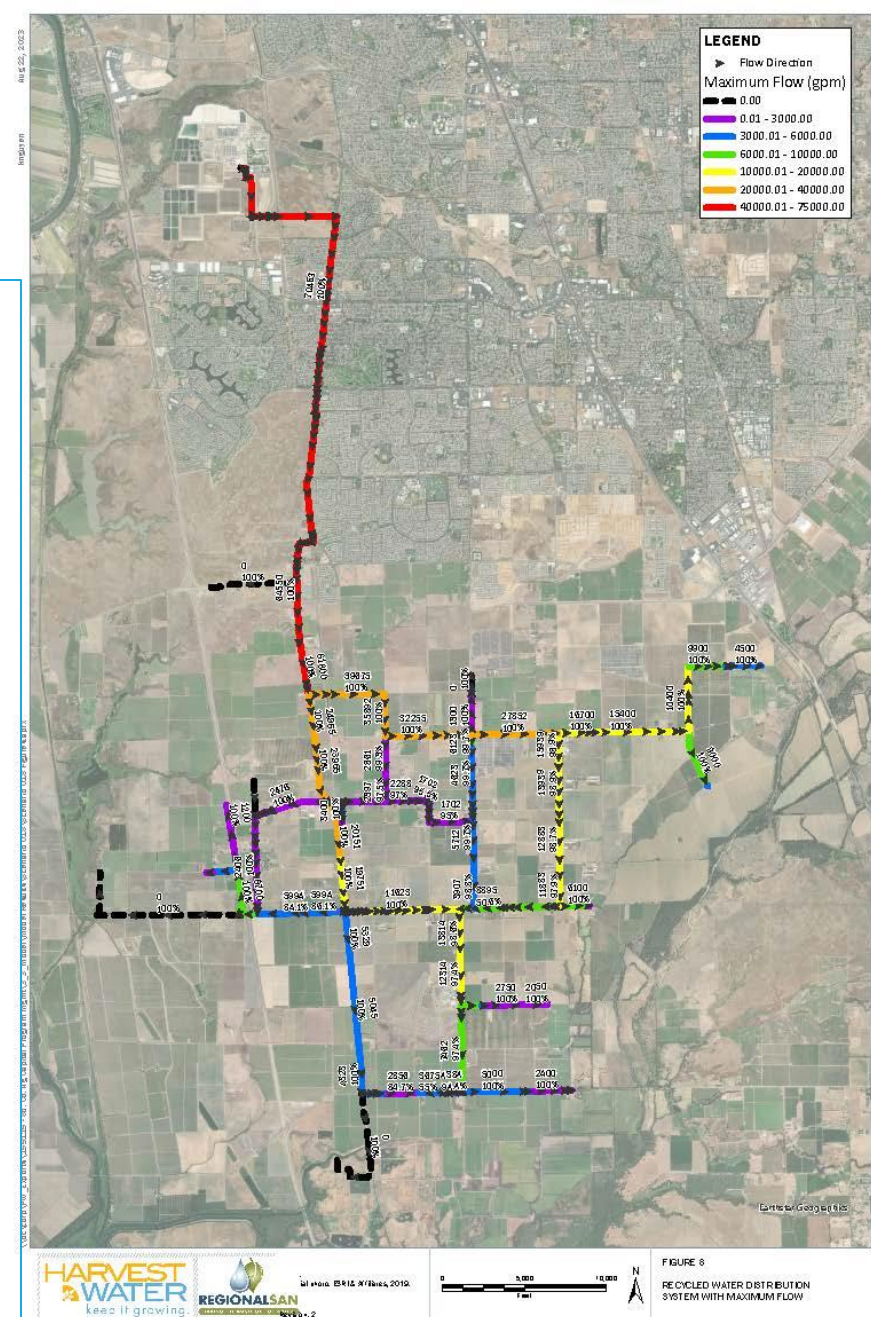
- Delivery goal = 32,500 AFA
 - Peak Summer Irrigation
 - Remaining 17,500 AFA is for shoulder season and winter application
- Phase 1 OFCA Contract
 - 56 Connections
 - Represent 66% of summer irrigation delivery goal
- Phase 2 OFCA Contract
 - 35 Connections in bid set
 - 110% of delivery goal



Third Party GIS Disclaimer: This map is for reference and graphical purposes only and should not be relied upon by third parties for any legal decisions. Any reliance upon the map or data contained herein shall be at the users' sole risk.

Capital Program Management Office (C-PMO) - April 2020

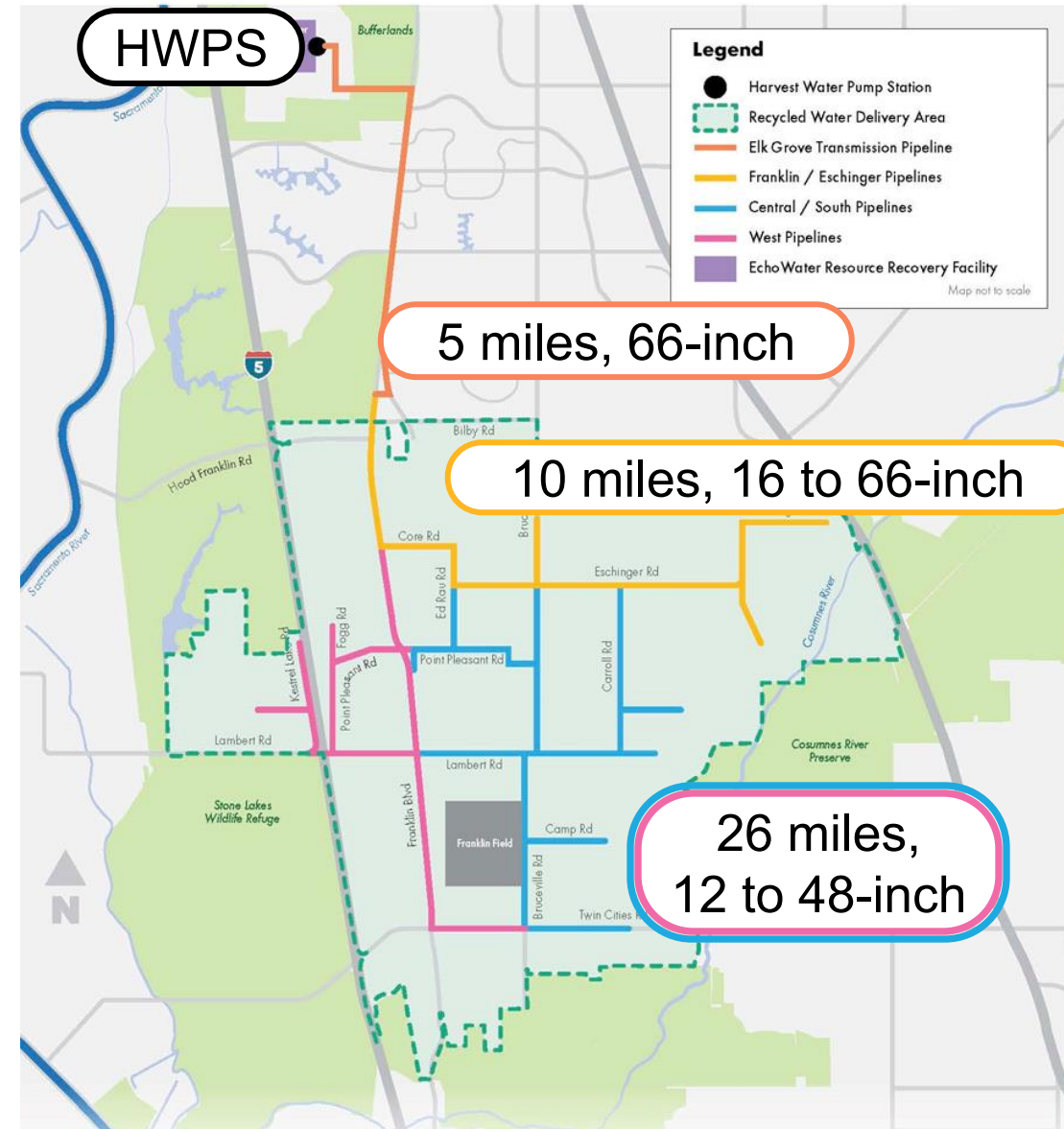
1. Surveys – Aerial, Topographic, ROW & Property Boundaries
2. Preliminary Design – Water Demand Data, Geotechnical Investigations, Hydraulic Modeling (AutoDesk InfoWater)
3. Design Standards
4. Define Projects & Budget Estimates
5. Property Rights Acquisitions
6. Designer & Construction Management Consultant Contracts Procurement
7. Public Outreach



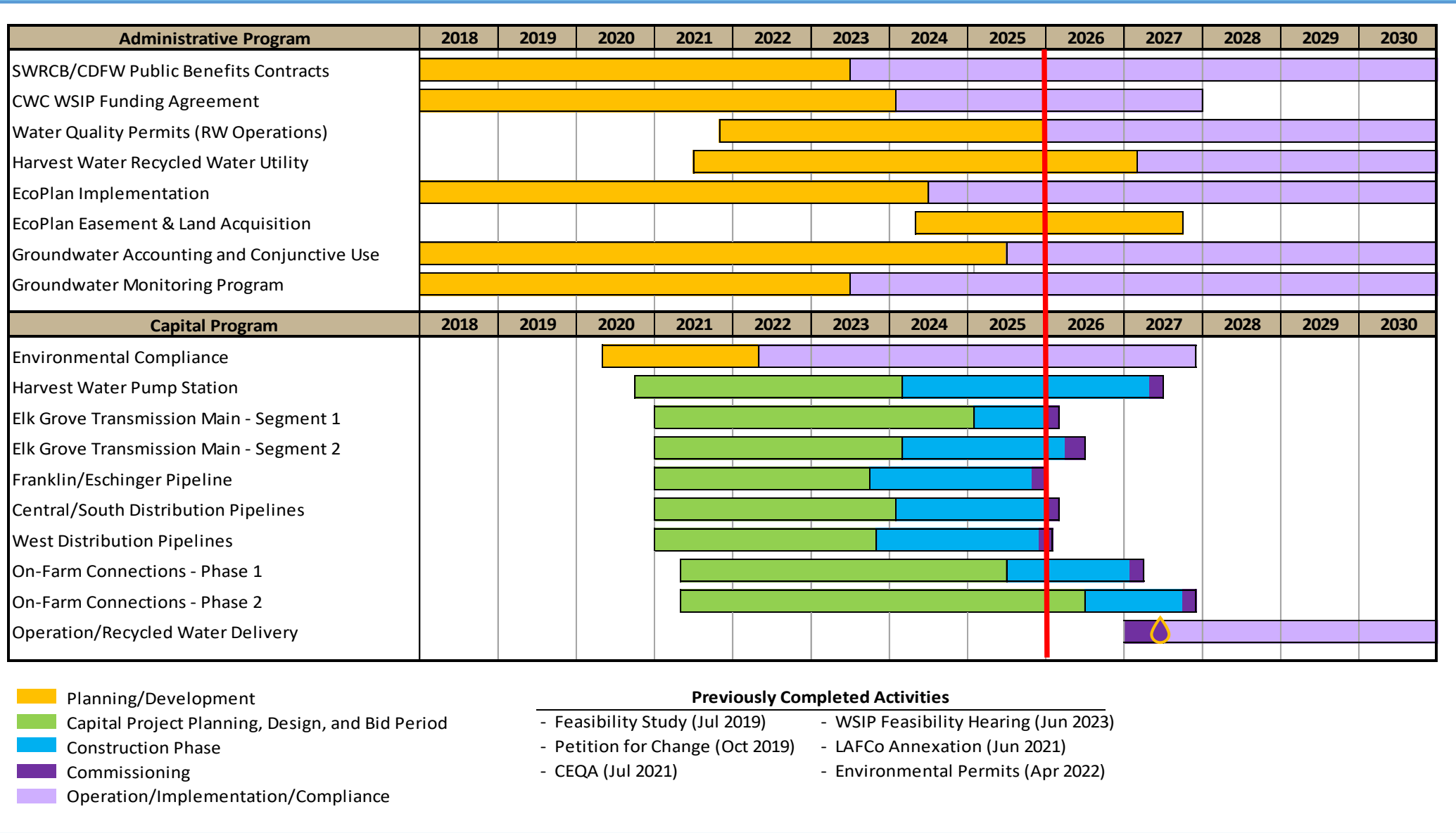
Capital Program

Harvest Water Construction Projects

1. Harvest Water Pump Station
2. Elk Grove Transmission Pipeline, Segments 1 & 2
3. Franklin/Eschinger Pipelines
4. Central/South Pipelines
5. West Pipelines
6. On-Farm Connection Assemblies, Phases 1 & 2



Harvest Water Program Schedule



Program Anticipated Funding

Funding	\$M
Executed Grant Agreements	
WSIP Grant	\$364.8
USBR WIIN Grant	\$30.0
Executed Cost Share Agreement	
SacDOT	\$5.5
Potential Grant Awards – Not Executed**	
SWRCB's WRFPP Grant (Ph1)	\$15.0
USDA (Congressionally Directed)	\$1.0
Potential Funding to Date	\$416.3
Total Program Budget	\$597.2
Current Estimated Funding Gap	\$180.9

Total Program Budget	\$597.2M
-----------------------------	-----------------

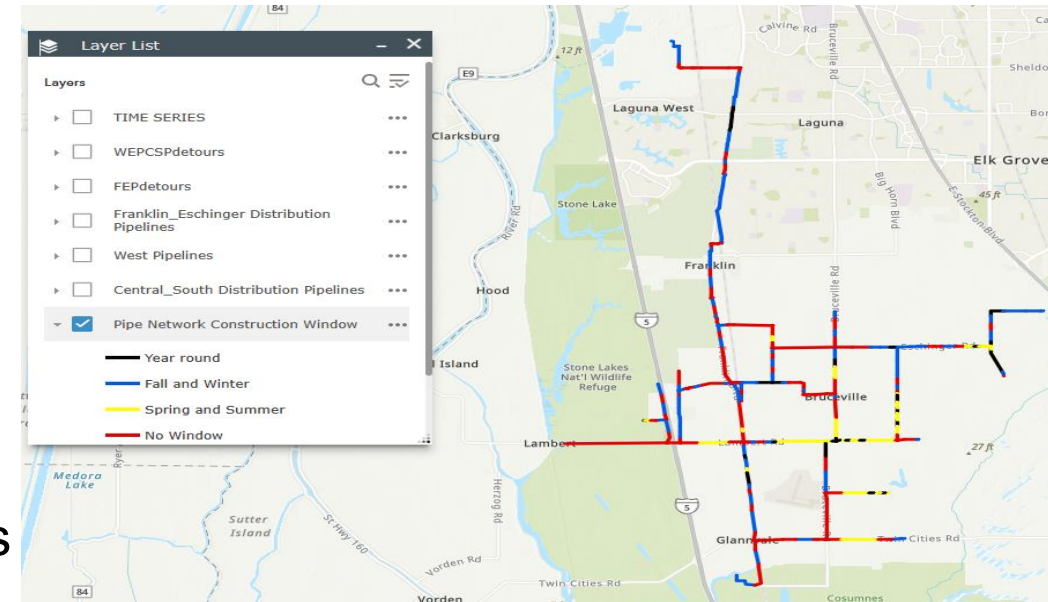
A-PMO Budget = \$120.0M

C-PMO Budget = \$477.2M

**Contingent on working with agencies to execute grant agreements

Challenges & Lessons Learned

- 💧 Obtaining and Retaining Grower/Landowner Interest, Trust, & Commitment
- 💧 Conveyance System Operation & Control
 - 🟡 Managing Limited Supply vs. Demand
 - 🟡 No System Storage
- 💧 Environmental Restrictions in Rural Area
 - 🟡 Early start on permitting process
 - 🟡 Established Relationships with Resource Agencies
- 💧 Utility Coordination – Complete and Accurate Information
- 💧 Plans for Road Reconstruction – Expect the Worst



Challenges Continued - Community Impacts

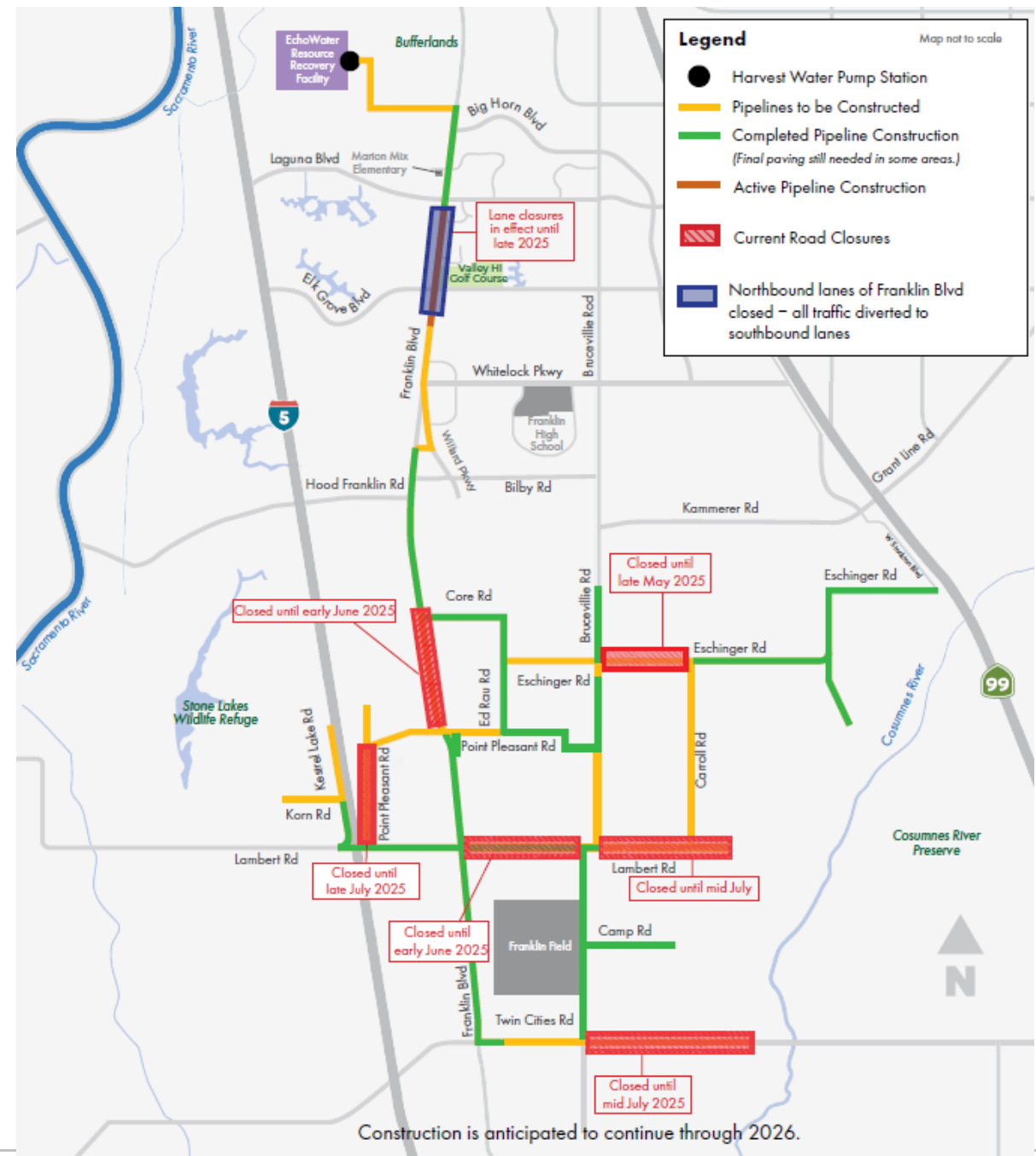
- 💧 Businesses – Maintaining Access & Signage
- 💧 Local Traffic Detours & Lane Shifts
 - ❑ Limit extent of active work areas
 - ❑ Provisions in contracts for heading changes
- 💧 Agricultural Operations
 - ❑ Land Use – Staging Areas, Trespass
 - ❑ Crop Transport, Farm Equipment
- 💧 Coordination with Public Transit, School Buses
- 💧 US Mail and Parcel Delivery Services
- 💧 Multi-Faceted and Continual OUTREACH!



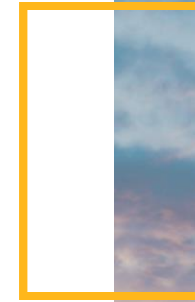
Construction Activity Outreach

Construction Update

May 2025



Progress & Construction Photos



Harvest Water Pumping Station



- 💧 Low Bid = \$57.5M
- 💧 Contractor: C. Overaa & Co.
- 💧 Completion: Summer 2027

Harvest Water Pumping Station



Installed Pump Cans, Duct Banks, and Discharge Elbows

Suction Side - Vertical Turbine Pump Can Installation



Elk Grove Transmission Pipeline Segment 1



- Low Bid = \$16.8M
- Contractor: Mountain Cascade
- Completion: January 2026

Elk Grove Transmission Pipeline Segment 2



- 💧 Low Bid = \$51.3M
- 💧 Contractor: Mountain Cascade
- 💧 Completion: May 2026

Franklin-Eschinger Pipelines



- Low Bid = \$56.8M
- Contractor: Steve P. Rados
- Completion: May 2026



West Pipelines



- Low Bid = \$33.6M
- Contractor: Sukut Construction
- Completion: December 2025

Central-South Pipelines



- Low Bid = \$41.0M
- Contractor: Ranger Pipelines
- Completion: May 2026

Road Reconstruction

- 💧 Existing pavement in certain roadways did not stand up to construction impacts, requiring reconstruction
- 💧 Full-depth reclamation (FDR) most cost-effective restoration alternative
 - 🟡 Eschinger Road (in Contract)
 - 🟡 FDR Road Sections By Change Order

Project	Street	Price	Length (LF)
CSP	Camp Rd.	\$ 214,029.78	5,180
CSP	Pt. Pleasant	\$ 385,632.40	6,889
CSP	Ed Rau Rd.	\$ 204,497.33	3,850
CSP	Lambert Rd.	\$ 350,844.29	6,772
WEP	Pt. Pleasant	\$ 511,925.00	10,400
CSP	Carroll Rd.	\$ 426,643.62	10,548
CSP	Pt. Pleasant	\$ 203,133.95	3,400
Running Total		\$ 2,296,706.37	47,039



Camp Road FDR Construction



On-Farm Connection Assemblies (OFCA) Project

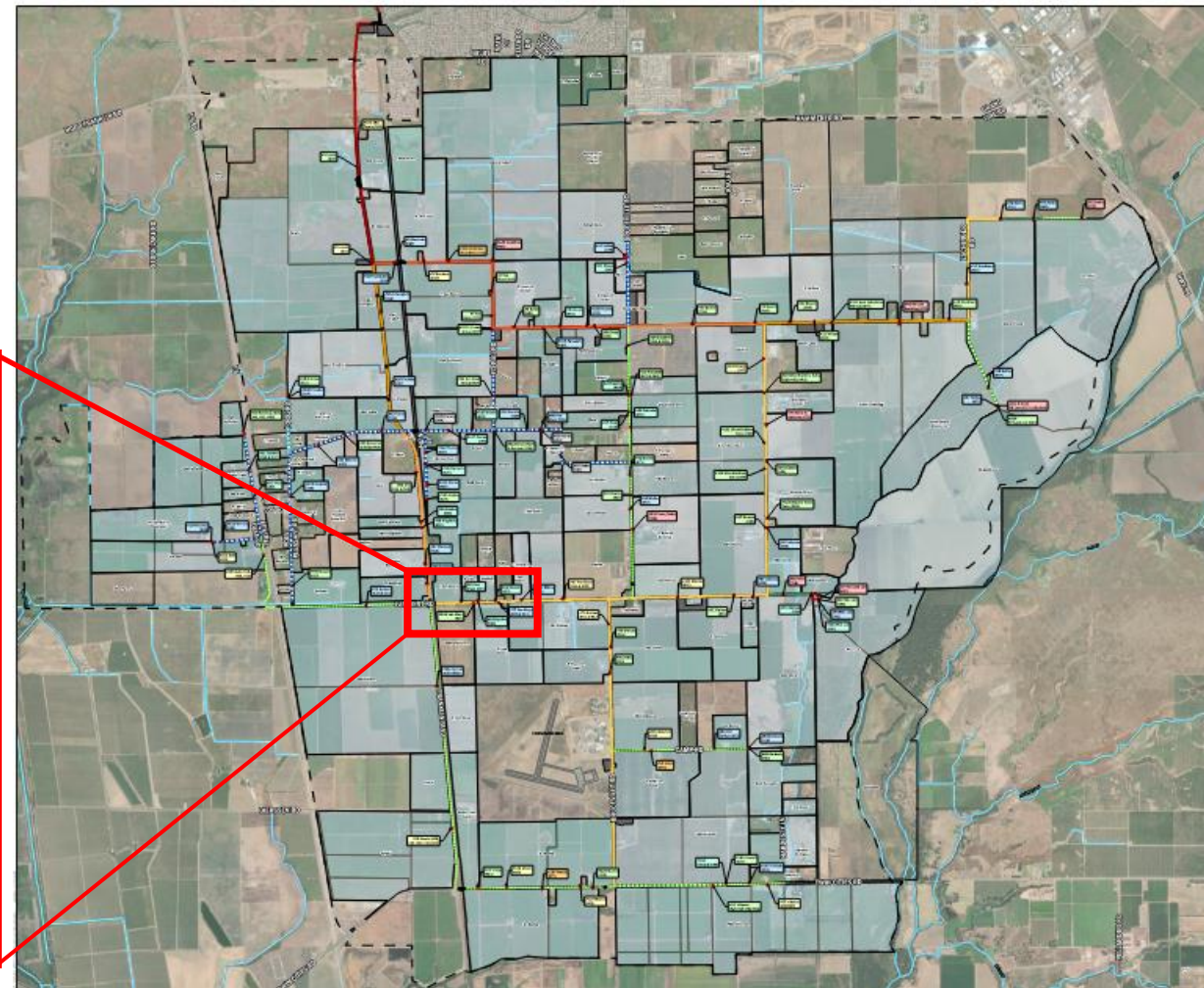
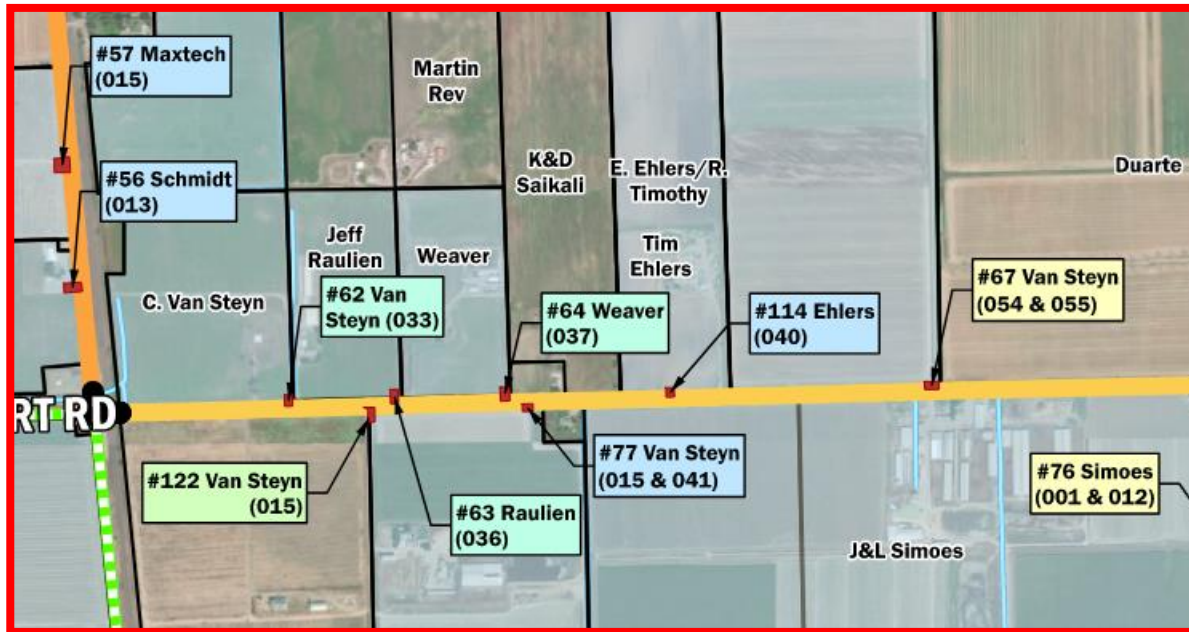
- Total 130+/- sites designed
- Phase 1: 56 Sites
 - 66% of Peak Irrigation Delivery Goal (21,500 AF/Year)
 - Low Bid = \$21M
 - Contractor: Ranger Pipelines
 - Construction Start September 2025
 - Complete in early 2027
- Phase 2: 35 Sites
 - 46% of Peak Irrigation Delivery Goal (11,000 AF/Year)
 - Low Bid = \$11.7M
 - Contractor: Ranger Pipelines
 - Bid Award May 27, 2026
 - Complete in Fall 2027



Harvest Water – Enterprise Management System

What is EMS

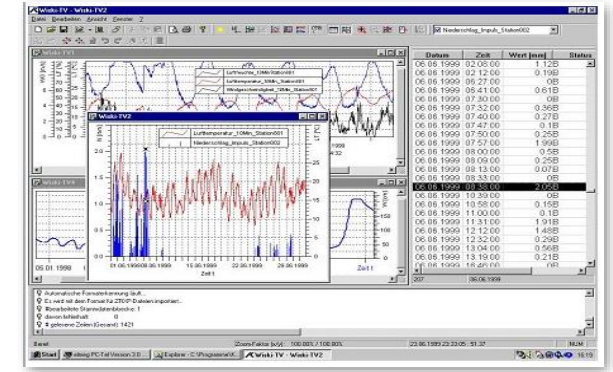
- Enterprise Management System
 - Grower Interface to schedule water deliveries
 - Management tool for SacSewer for operations, billing, and reporting



Harvest Water – Enterprise Management System

Why is it needed

- Manage Recycled Water Supply and Demand
 - Connected Demand approximately = 300 MGD
 - Maximum Pumping Station Capacity = 105 MGD
 - Maximum 7-day rolling average water delivery of 70 MGD
 - Drought conditions – Reduced flow
 - Plant Diversions – No Flow
- Need to Automate the Water Deliveries
 - Minimize Sacssewer staffing Impacts
- Cybersecurity
 - Need a standalone system to keep Plant SCADA secure



View data for Planning Region - Select Region - 100

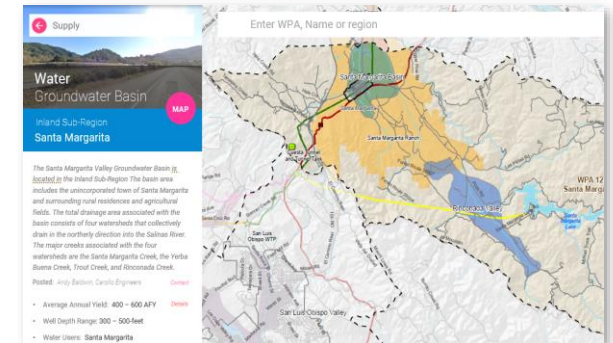
Data by Planning Decade and Theme

Decade: 2020 2030 2040 2050 2075

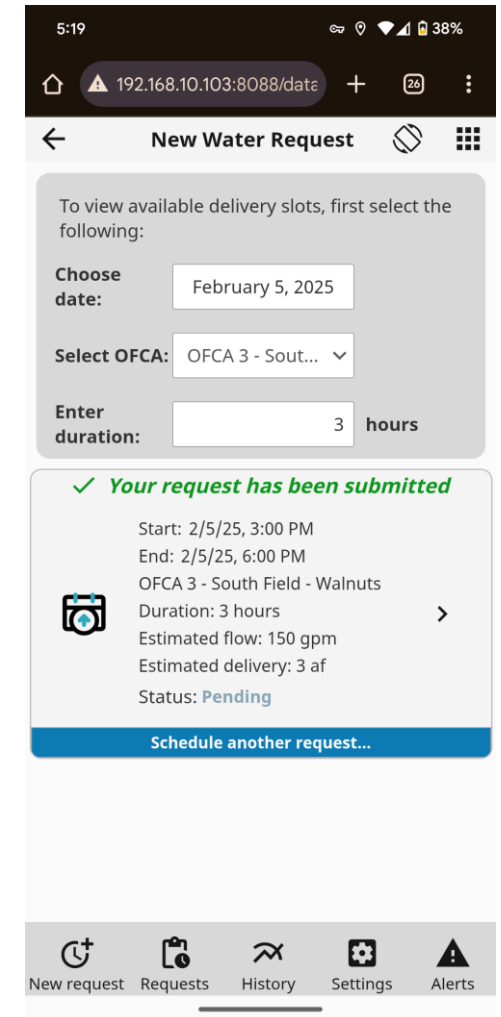
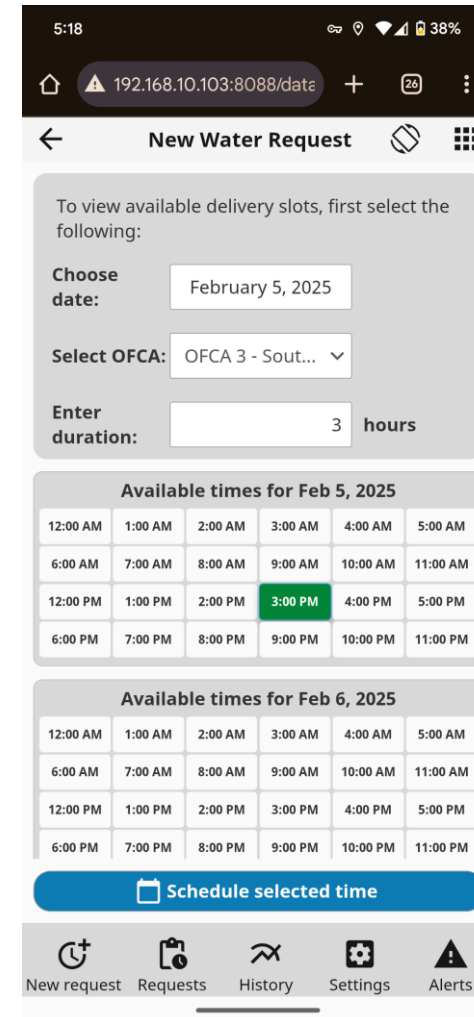
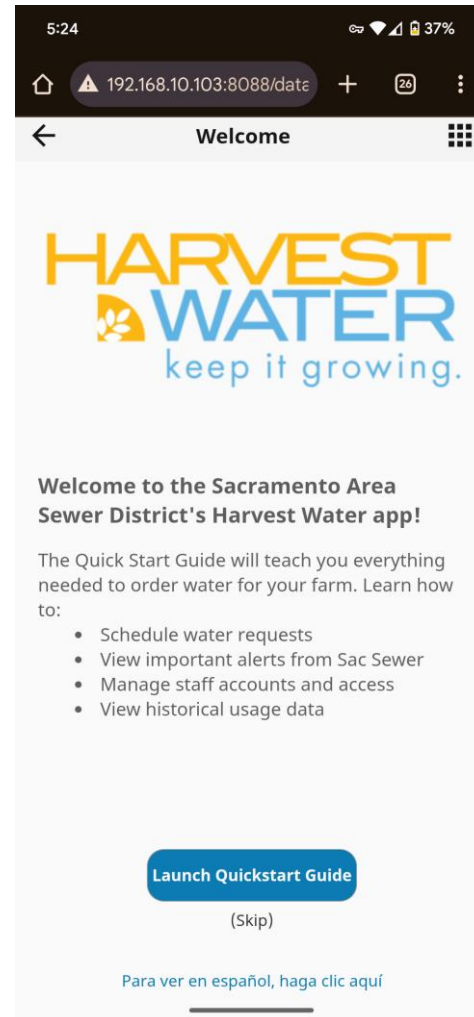
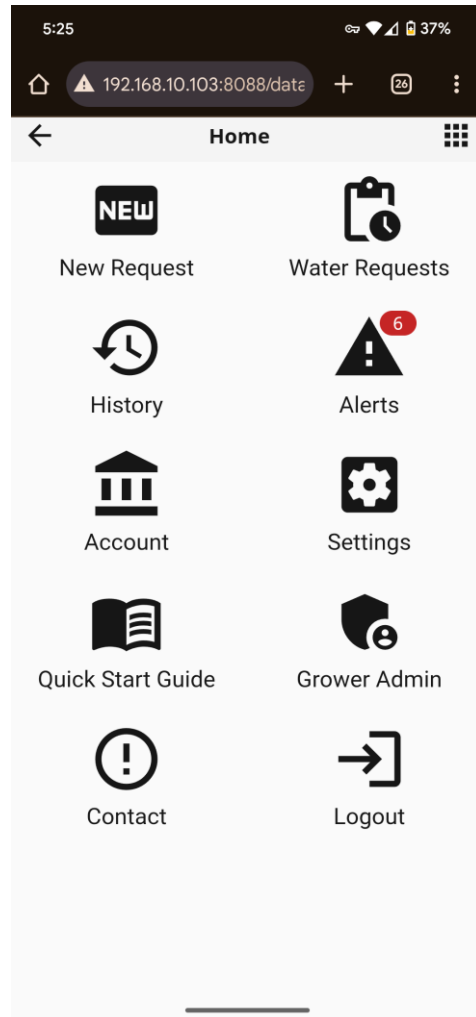
Theme: POPULATION DEMANDS EXISTING SUPPLIES NEEDS (POTENTIAL SHORTAGES) STRATEGY SUPPLIES

Regional Summary Data - 2020 - Strategy Supplies (acre-feet/year)

Region A	Irrigation	Municipal	Manufacturing	Steam Electric Power	Livestock	Mining	Total
A	141,398	12,957	1,008	0	0	0	155,363
B	6,830	1,565	192	0	0	0	8,587
C	1,856	118,217	1,373	98	478	2,274	123,296
D	13,388	19,504	2,532	30,966	15,187	2,543	63,220
E	33,903	36,800	0	7,260	0	4,470	82,433
F	29,174	28,004	1,261	1,800	0	19,106	79,345
G	17,104	77,835	3,160	1,564	11	19,379	119,053
H	98,302	71,979	72,174	4,968	725	3,293	251,441
I	0	7,305	1,625	0	15,423	115	24,468
J	111	12,436	0	0	72	328	12,946
K	180,002	49,421	0	18,597	0	2,662	250,682



Grower App Screen Shots



Questions?

Contact Info:

Mike Crooks, Deputy Director of Operations,
Harvest Water Capital Program Manager

crooksm@sacsewer.com

916-875-9416

