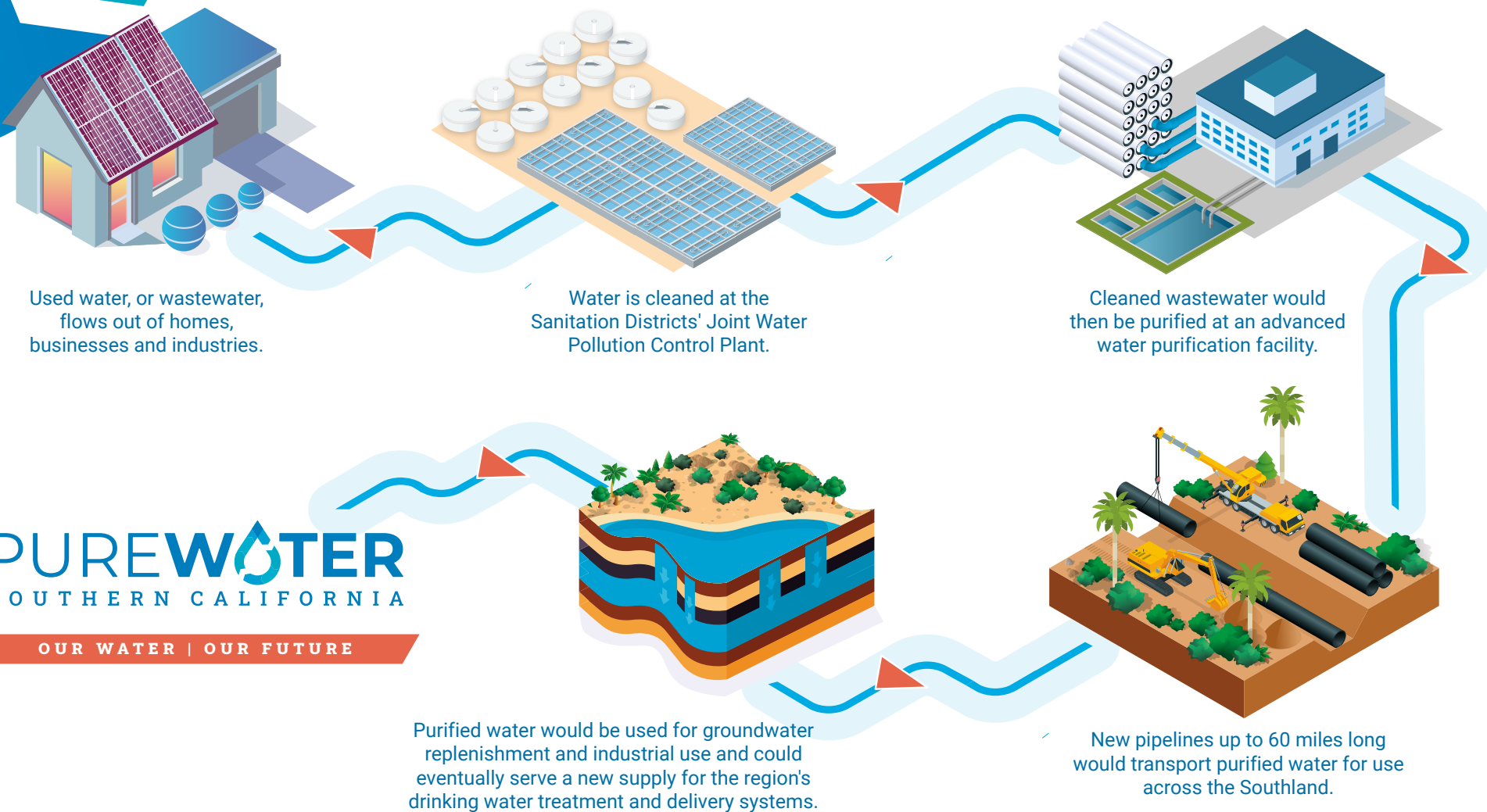


A LOOK INSIDE

How It Works



PUREWATER
SOUTHERN CALIFORNIA

OUR WATER | OUR FUTURE

PUREWATER
SOUTHERN CALIFORNIA

OUR WATER | OUR FUTURE



LEARN MORE

You can also register for a virtual or in-person tour of the Pure Water Demonstration Plant, conducted in English and Spanish.

TO LEARN MORE

www.mwdh2o.com/purewater



**BE INFORMED,
BE INVOLVED**

www.mwdh2o.com



@mwdh2o



The Metropolitan Water District of Southern California is a state-established cooperative of 26 cities and water agencies serving nearly 19 million people in six counties. Metropolitan draws on supplies from the Colorado River through the Colorado River Aqueduct, which it owns and operates; from Northern California via its participation in the State Water Project; and from exchanges and transfer arrangements. Demands on Metropolitan also are managed through conservation and local resource programs. An increasing percentage of Southern California's water supply comes from conservation, water recycling, and recovered groundwater.

The Los Angeles County Sanitation Districts are a regional public agency consisting of 24 independent special districts serving over 5.6 million people in 78 cities and the unincorporated territory within Los Angeles County. The Sanitation Districts protect public health and the environment through innovative and cost-effective wastewater and solid waste management and, in doing so, convert waste into resources such as recycled water, energy and recycled materials. The Sanitation Districts operate 11 wastewater treatment plants. The Joint Water Pollution Control Plant in Carson is the largest of these plants and one of the largest in the country.



**THE METROPOLITAN WATER DISTRICT
OF SOUTHERN CALIFORNIA**



**LOS ANGELES COUNTY
SANITATION DISTRICTS**
Converting Waste Into Resources

PUREWATER
SOUTHERN CALIFORNIA

OUR WATER | OUR FUTURE



A New Source of Water for Southern California



**THE METROPOLITAN WATER DISTRICT
OF SOUTHERN CALIFORNIA**



**LOS ANGELES COUNTY
SANITATION DISTRICTS**
Converting Waste Into Resources





Our Water | Our Future

Water is too precious to use just once. So The Metropolitan Water District of Southern California is investing in a water recycling program that will reuse water currently sent to the ocean.

Pure Water Southern California, a partnership with the Los Angeles County Sanitation Districts, would purify cleaned wastewater to produce high quality water that can be used again. The program would provide a climate-resilient supply of water, readily available, rain or shine.

Pure Water Southern California
in Numbers



Would produce up to **150 million gallons** daily, enough water for about 500,000 homes



One of the largest programs of its kind in the world



More than **15 program partners** and hundreds of program supporters



A new source of water for up to **15 million people**



Nearly **\$100 million** in grant and partnership funds secured

SETTING THE STANDARD

Commitment to Water Quality

Metropolitan and the Sanitation Districts are committed to delivering high-quality water that meets all water quality standards and protects public health. At the Pure Water Southern California Demonstration Plant, the agencies are studying an innovative purification process that could increase efficiency in water quality and recycling. The plant features a three-step process that removes constituents such as pharmaceuticals, pesticides, viruses, bacteria, and other particles to produce highly purified water.



STAGE 1

Membrane Bioreactors

Microorganisms remove and transform nitrogen compounds, while membranes filter out tiny particles smaller than 1/100 of a grain of sand.

STAGE 2

Reverse Osmosis

Pressurized membranes further remove microscopic materials, such as bacteria, pharmaceuticals, and salts, eliminating more than 99% of all impurities.

STAGE 3

Ultraviolet Light/Advanced Oxidation

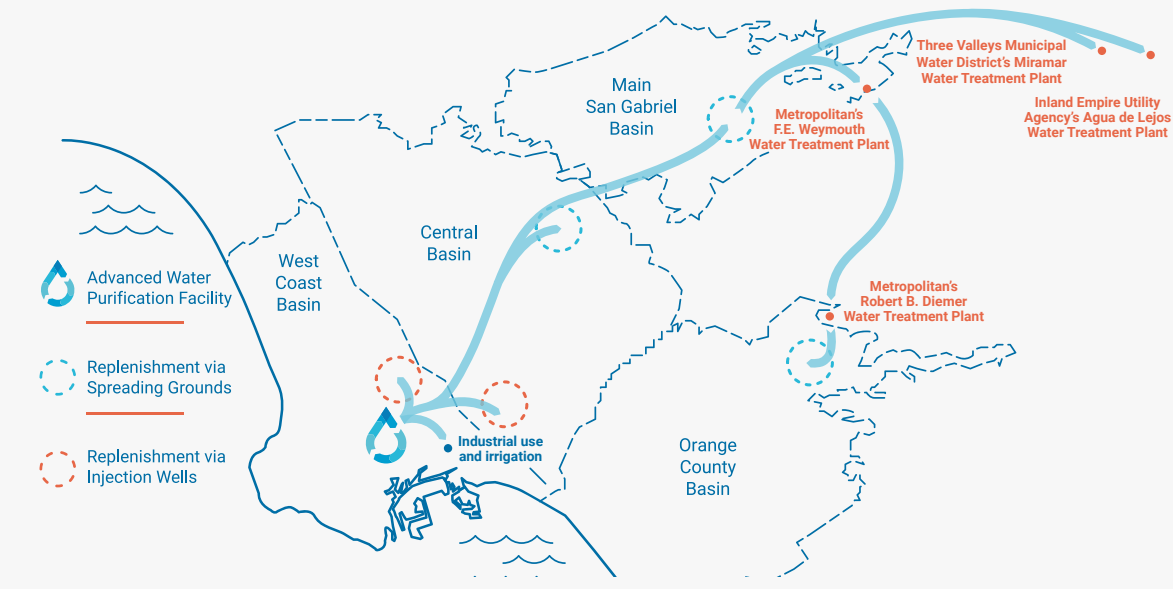
Ultraviolet light and a powerful oxidant destroy any remaining viruses and remove trace chemical compounds.



OUR WATER | OUR FUTURE



Water quality results from the demonstration plant show an effective purification process that could set a new standard in water reuse.



A Schedule for Implementation

Pure Water Southern California is in the environmental planning and review phase. Metropolitan and the Sanitation Districts will prepare an Environmental Impact Report to evaluate the potential impacts of the program.

2021-24 Environmental planning and review
2024-31 Design and construction
2032 Start-up and operations

The program would be developed in phases. Metropolitan and the Sanitation Districts are considering opportunities to expedite Pure Water Southern California and bring elements online as early as 2028.

TO LEARN MORE
www.mwdh2o.com/purewater



BUILDING RELIABILITY

Investments in Infrastructure

Pure Water Southern California would include construction of new infrastructure along with the use of existing facilities to deliver a reliable water supply for future generations.

INFRASTRUCTURE INVESTMENTS MAY INCLUDE:

- A new advanced water purification facility to purify water. Other buildings for maintenance, warehouse, storage, training, and community meetings may also be onsite.
- Up to 60 miles of new pipeline, pump stations, and other facilities to deliver purified water to groundwater basins and water treatment plants.
- Upgrades at groundwater replenishment facilities across Los Angeles County, including construction of new wells.

Creating New Jobs & Growing the Economy

The program benefits go beyond water supply, also fueling job creation and the economy. A 2021 study, by the Los Angeles Economic Development Corporation, found that the construction of Pure Water Southern California facilities could create **47,000** new jobs and **\$8.7 billion** in economic output. Continued operations would sustain **1,040** jobs and about **\$306** million in annual economic output. Metropolitan is exploring workforce development opportunities to facilitate local hiring and necessary job training.

Partnerships at Work

Developing a program of Pure Water Southern California's scale takes partners. In addition to the Sanitation Districts, partners include several Metropolitan member agencies, local groundwater basin managers, and water agencies in Nevada and Arizona interested in water exchanges to help enhance water reliability across the southwestern U.S.