



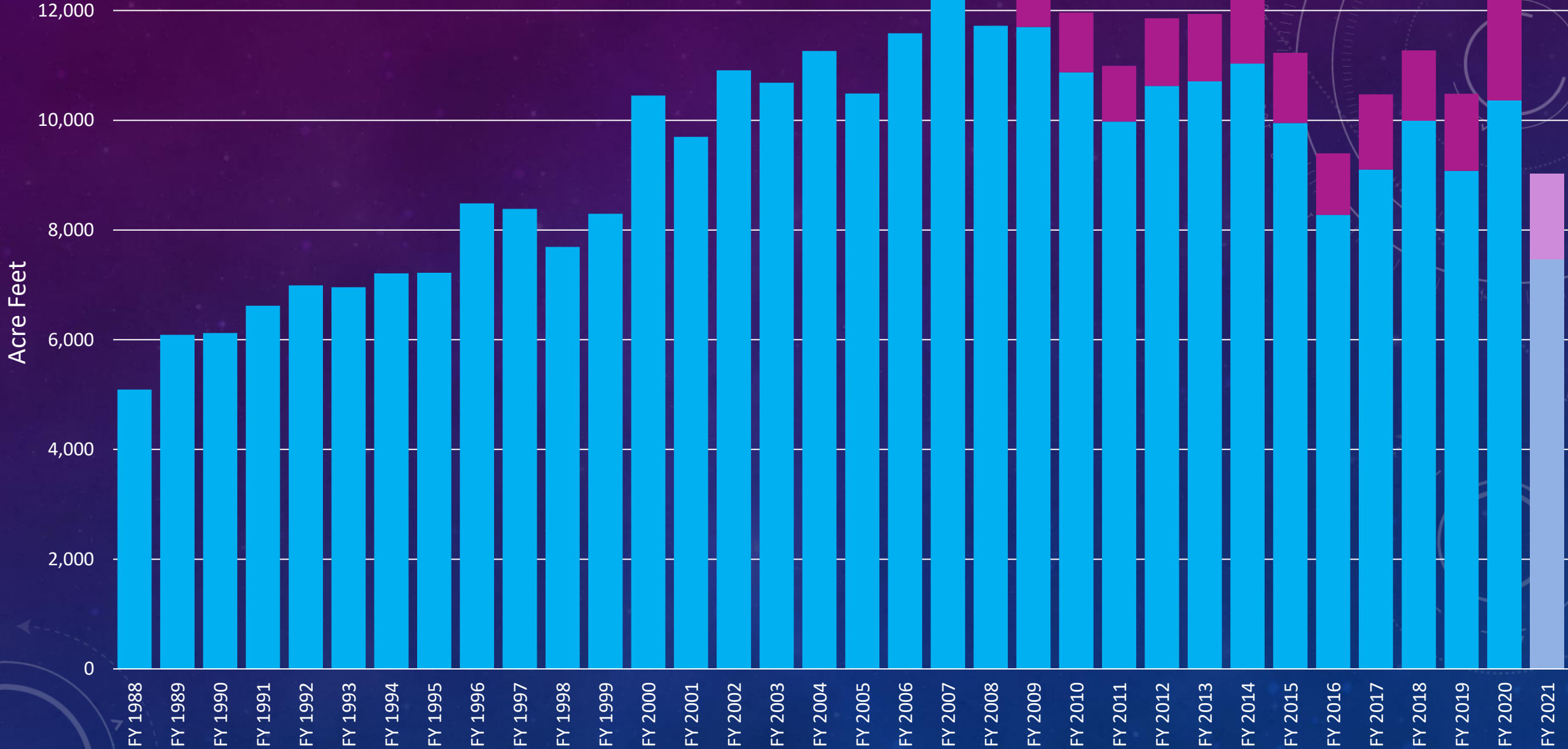
Yucaipa Valley Water District

# AN UPDATE TO YUCAIPA VALLEY WATER DISTRICT'S DUAL PLUMBED COMMUNITY

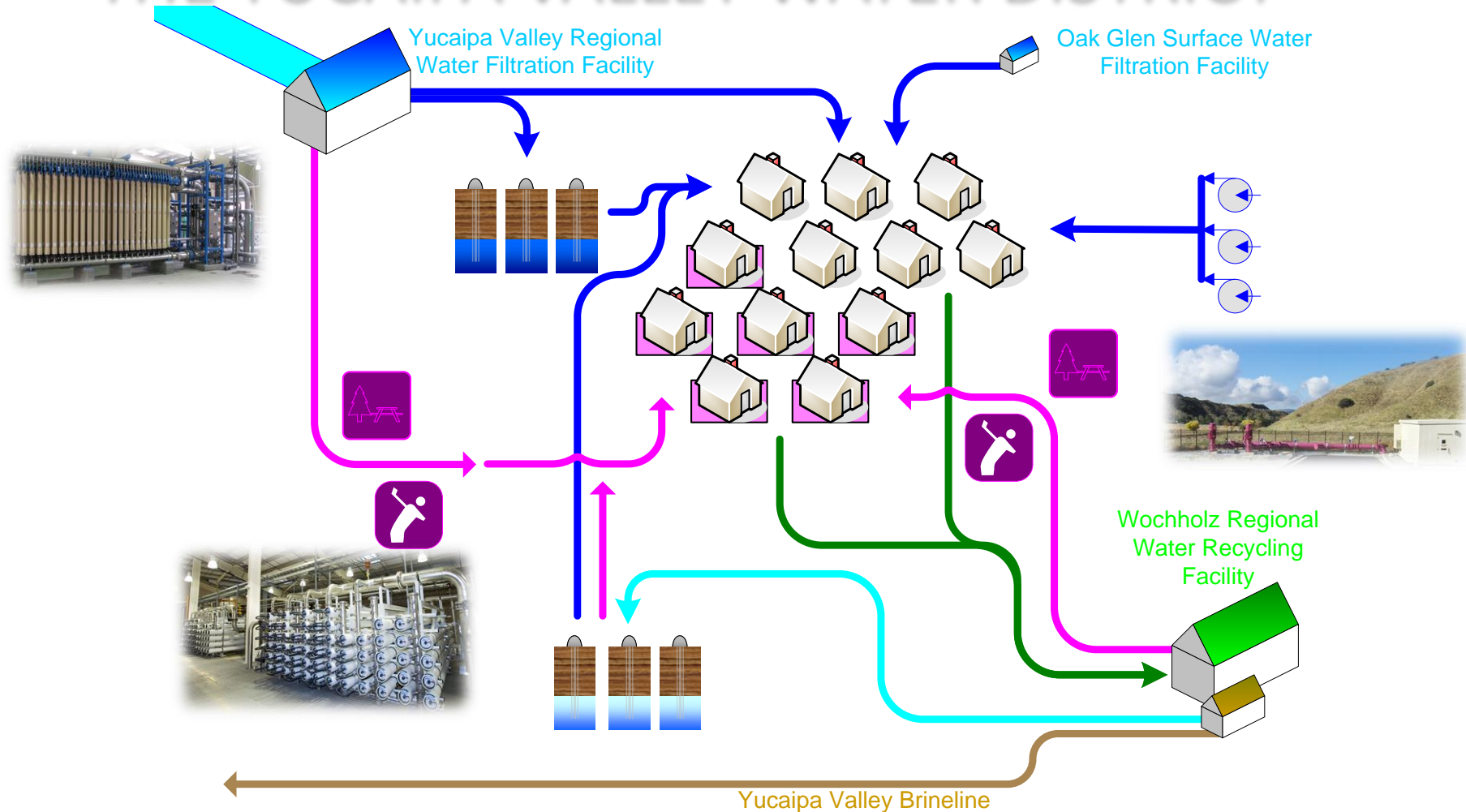
MADELINE BLUA

WATER RESOURCE SPECIALIST

# Yucaipa Valley Water District - Annual Water Consumption (Acre Feet)



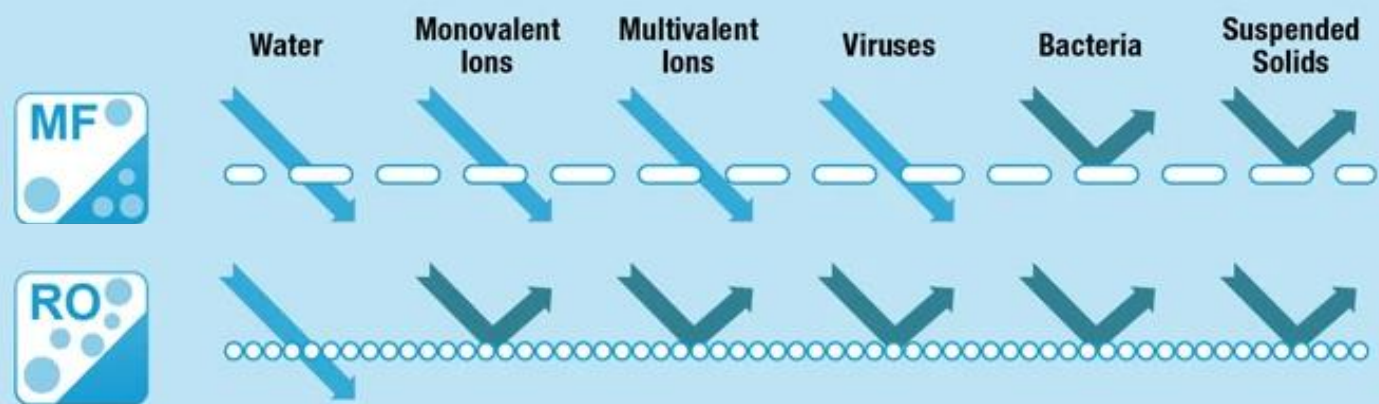
# WATER RESOURCE MANAGEMENT SCHEMATIC FOR THE YUCAIPA VALLEY WATER DISTRICT



















Wochholz Regional  
Water Recycling Facility

Calimesa Recycled Water Conveyance Project





## Doing our part for water conservation

As part of a statewide effort to conserve water, all homeowners must follow a four-step process to modify their home's existing landscaping and irrigation.



# FOUR STEPS

## To Modifying Your Outdoor Water Use

Follow this guide for required Residential Recycled Water Plan approvals. Your HOA and the Water District will assist you each step of the way.



### PREPARE DESIGN-BUILD DRAWINGS

As part of the state's water conservation requirements, homeowners in dual-plumbed communities wishing to make changes to their home's existing landscape and irrigation systems must prepare design concept drawings that follow the Residential Recycled Water Plan's design and construction guidelines. These guidelines are provided to the homeowner at the time of home purchase and are also available from the Yucaipa Valley Water District.

**Questions about preparing your design-build drawings? Contact the District at: (909) 797-5117.**

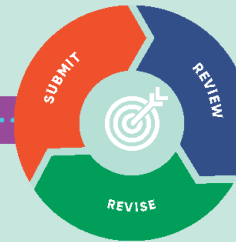


### SUBMIT YOUR DESIGN

Submit your completed design-build drawings to your HOA for review to ensure conformance to the Residential Recycled Water Plan's design and construction guidelines.

Once your drawings have been reviewed by the HOA, they will be submitted to the District for comment, corrections, and final approval.

# 3



### REVIEW AND REVISION PROCESS

After reviewing your plan, the District will send any comments or corrections back to you through your HOA. While it may take a few review and revision cycles to achieve a final plan that fully meets the Residential Recycled Water Plan's requirements, the District will make every attempt to ensure a smooth and timely process.

Once your design has been approved for construction, the District will sign or stamp your plans and return them to the HOA, who will give the final go-ahead.

# 4



### SCHEDULE MEETINGS PRIOR TO CONSTRUCTION AND PIPING BACKFILL

After your design is approved, schedule a pre-job meeting with the District staff before construction begins.

Once construction has begun but prior to covering piping, schedule one final inspection with the District.

To schedule meetings and inspections, call (909) 797-5117. Please keep in mind that the District requires two days' notice prior to the inspection.



### STAYING EFFICIENT AND SAFE

To ensure that your home continues to meet recycled water use requirements, the District will perform an inspection of your front and backyard landscape irrigation each year and conduct a cross-connection test every three years.

Any adjustments or corrections needed will be noted on the correction inspection forms and returned to you for your use and records.



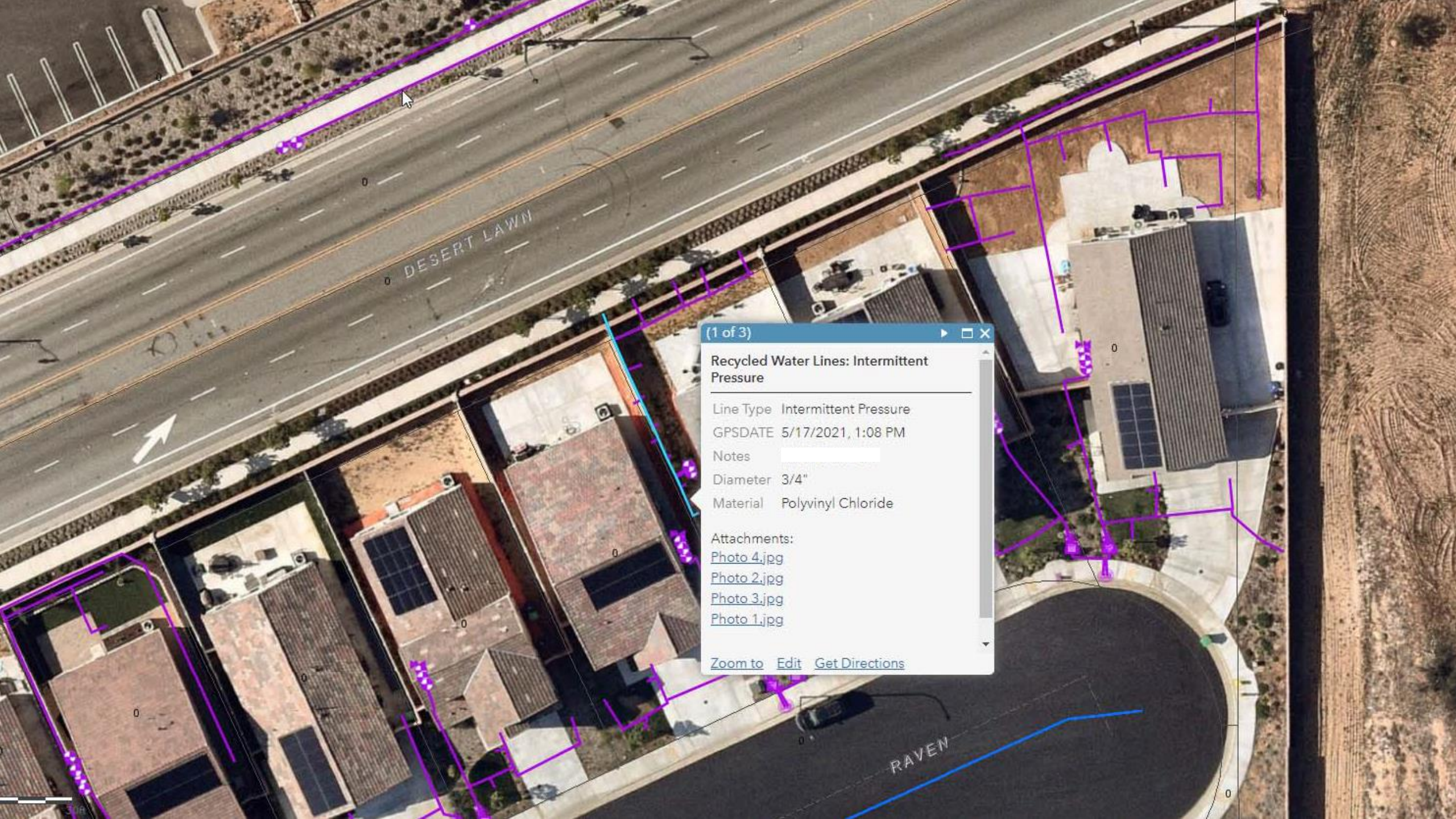












(1 of 3) ▶ □ ×

**Recycled Water Lines: Intermittent Pressure**

Line Type

Intermittent Pressure

GPSDATE

5/17/2021, 1:08 PM

Notes

Diameter

3/4"

Material

Polyvinyl Chloride

Attachments:

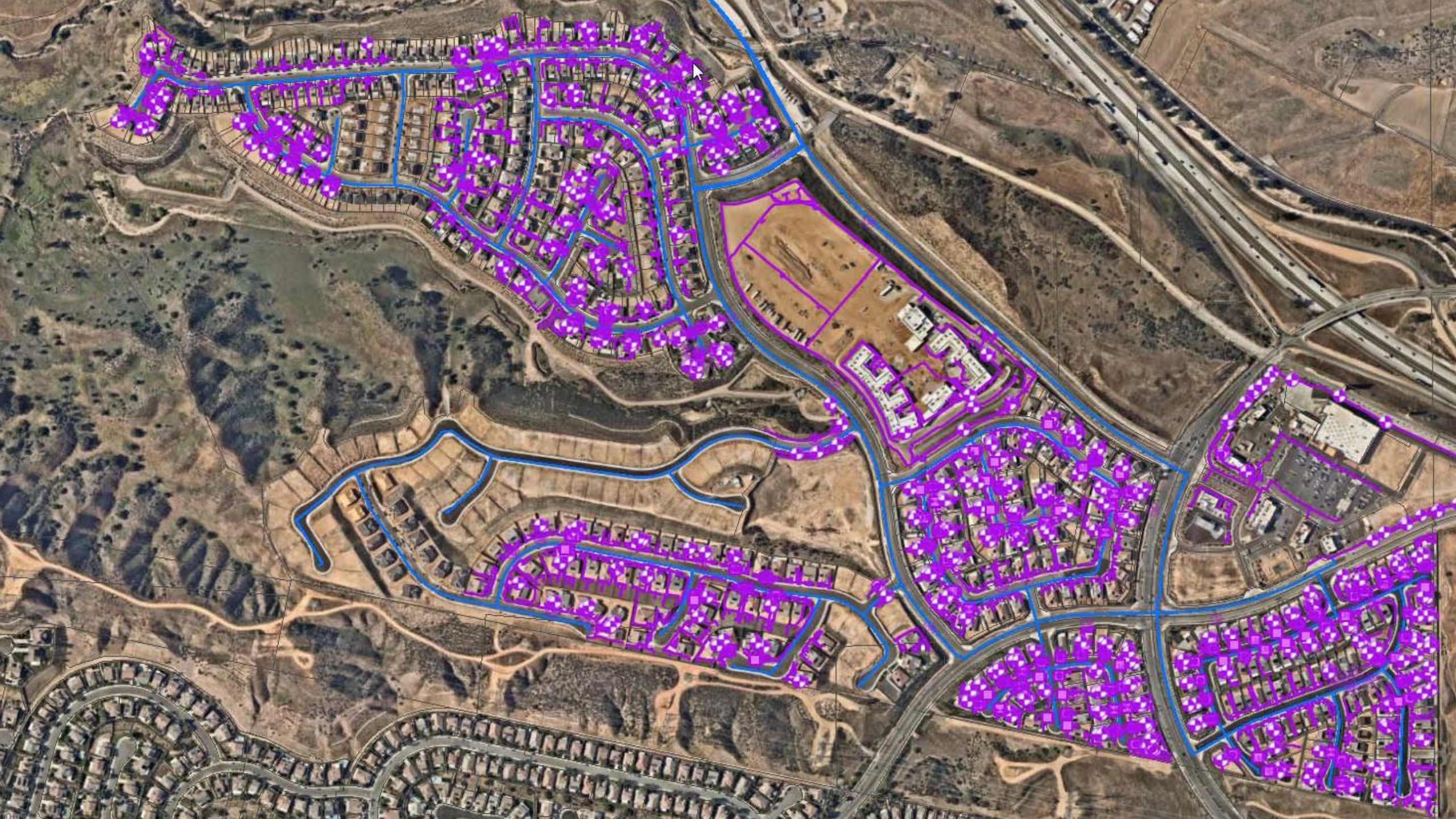
[Photo 4.jpg](#)  
[Photo 2.jpg](#)  
[Photo 3.jpg](#)  
[Photo 1.jpg](#)

[Zoom to](#)

[Edit](#)

[Get Directions](#)









LOG IN



SIGN UP VIA QR CODE



Good Afternoon,

Mark



Steve Smith



apple.int@mailinator.co...



### [🔗 Recycled Wate...](#)

Schedule your required class here.



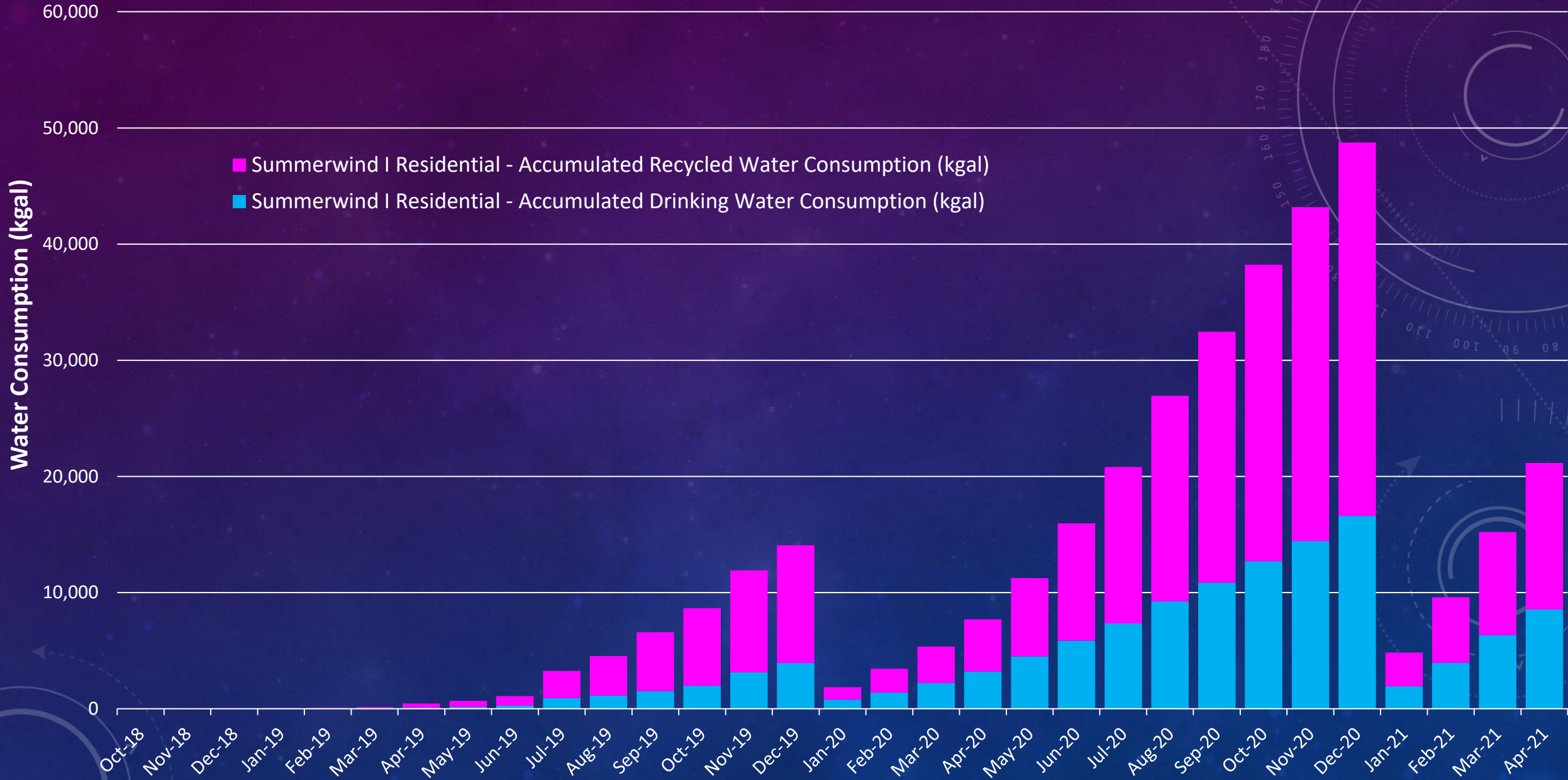
### [🔗 What is Recycl...](#)

Learn more about recycled water.

Upcoming Meetings

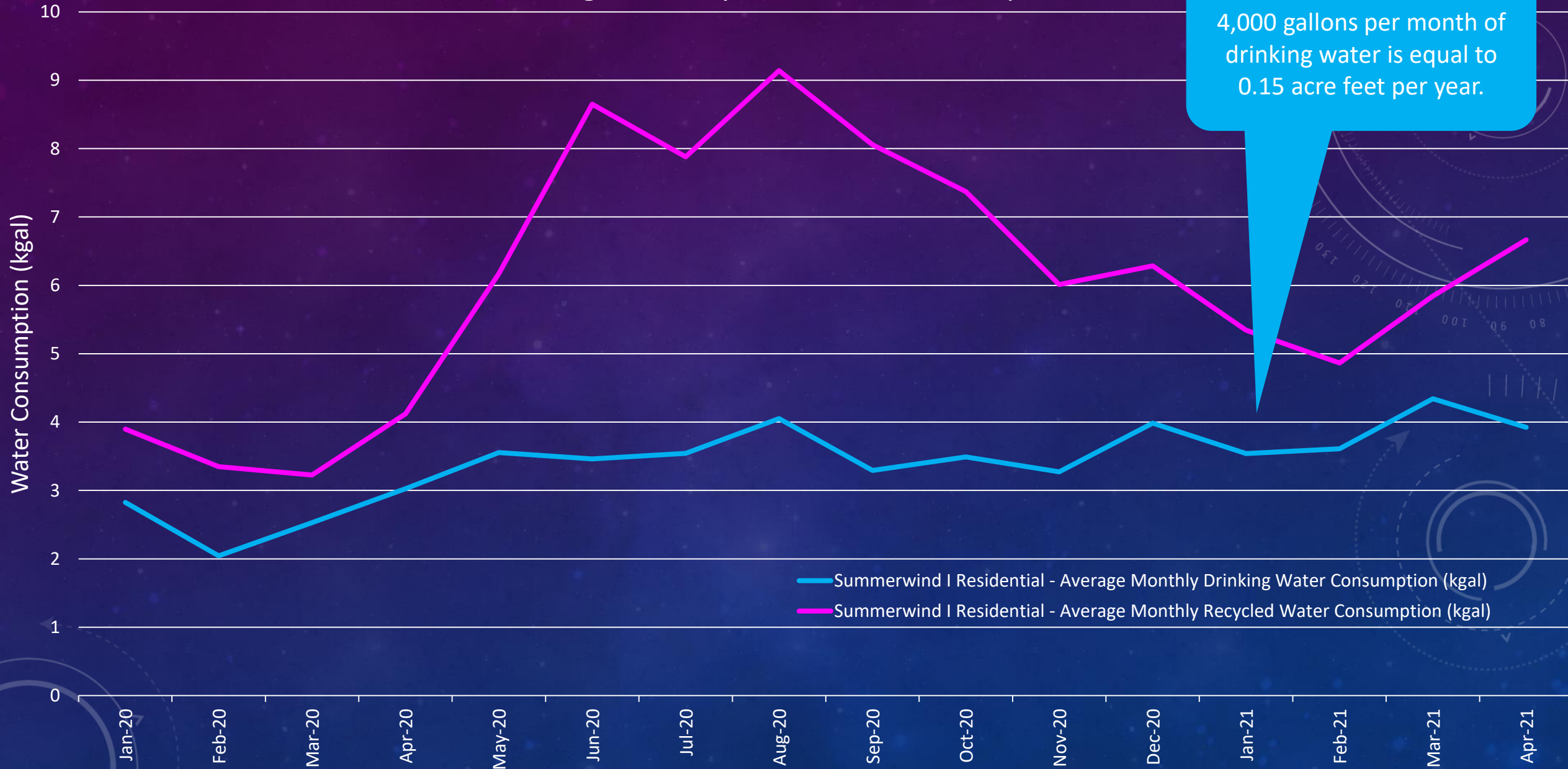


# Residential Dual Plumbed Consumption



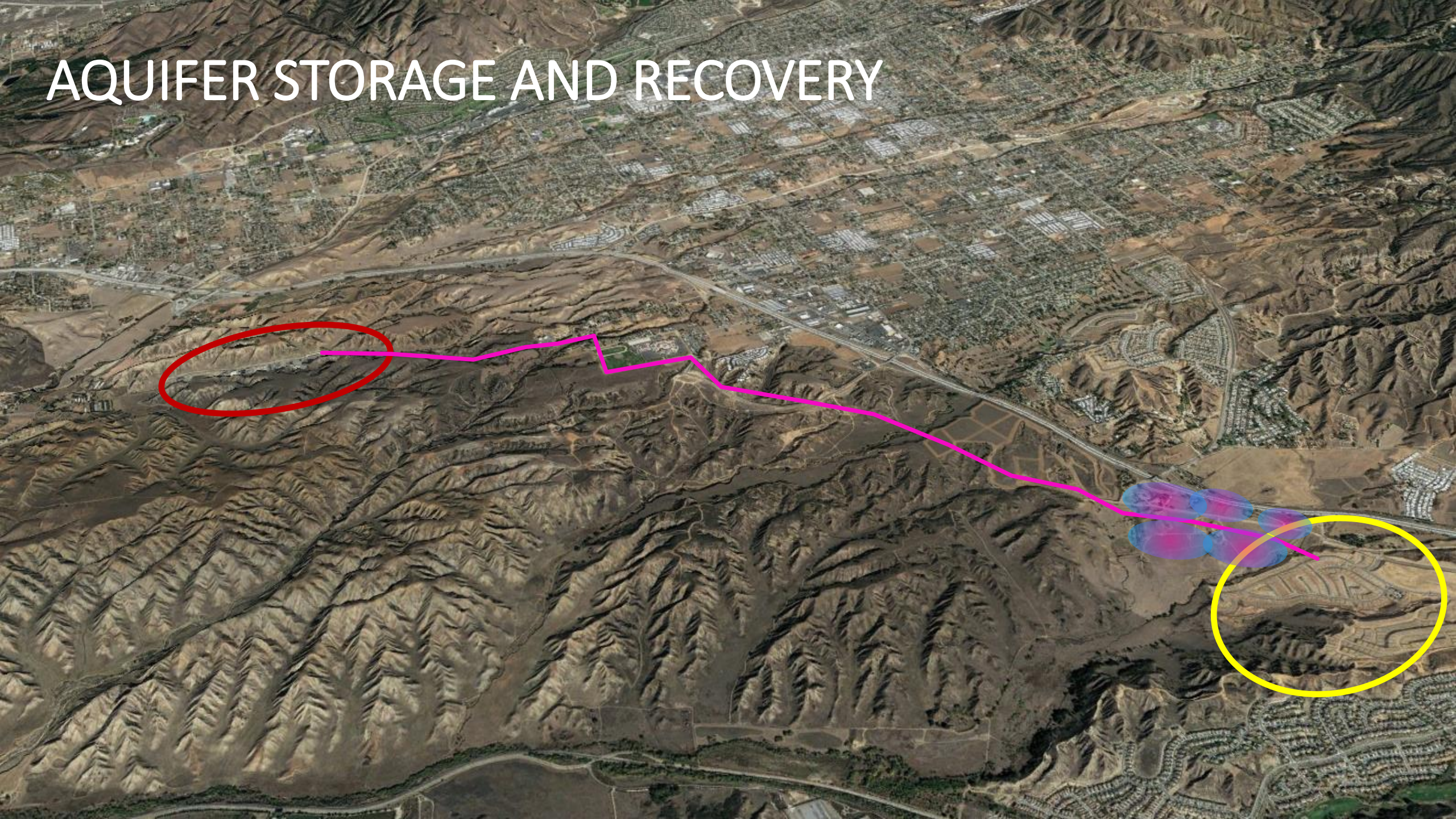


## Dual-Plumbed Community Average Monthly Residential Consumption





# AQUIFER STORAGE AND RECOVERY





The background is a deep blue gradient with a subtle pattern of white dots, resembling a starry sky. Overlaid on this are several faint, white geometric elements: concentric circles, arcs, and dashed lines with arrows indicating direction. A prominent circular scale with degree markings (0, 90, 180, 270) is visible in the upper right corner. Other smaller circular motifs are scattered in the top left and bottom left areas.

Thank you