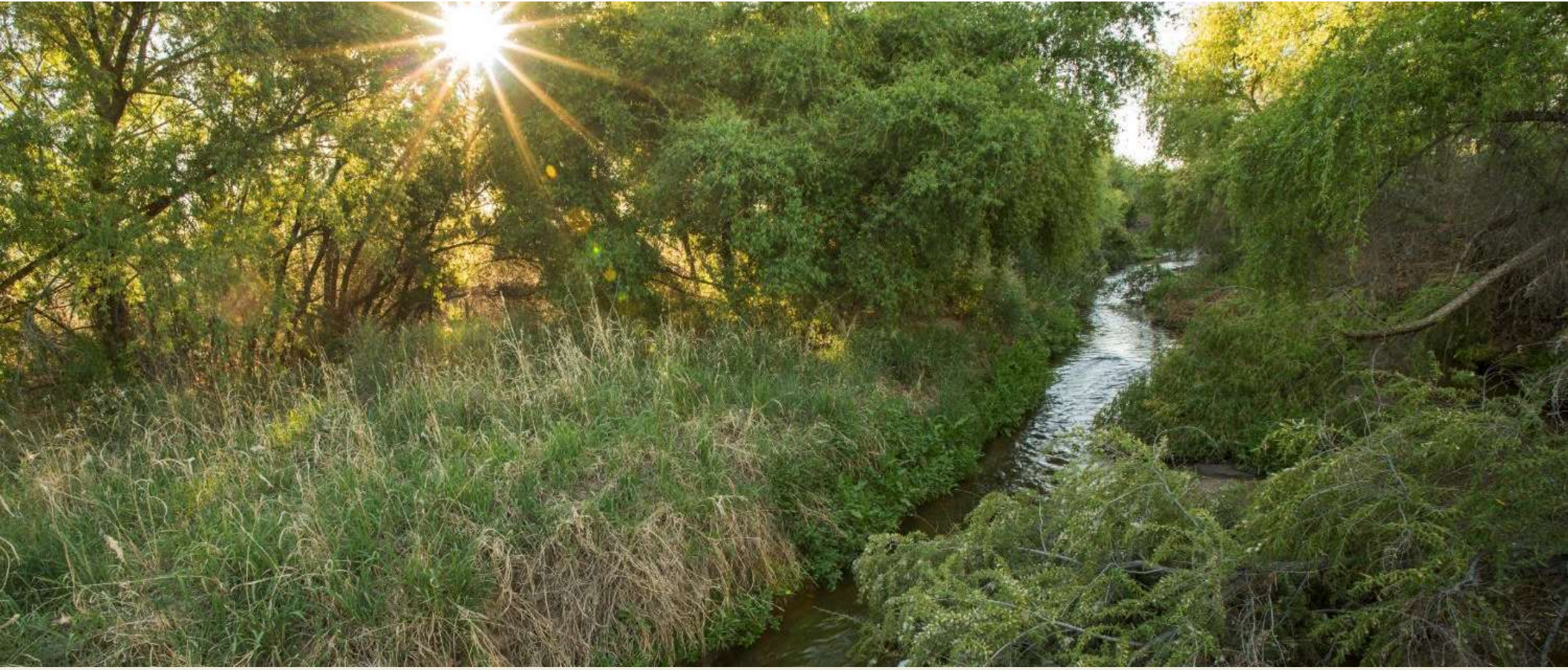


a living river

CHARTING SANTA CRUZ RIVER CONDITIONS
NORTHWEST TUCSON TO MARANA



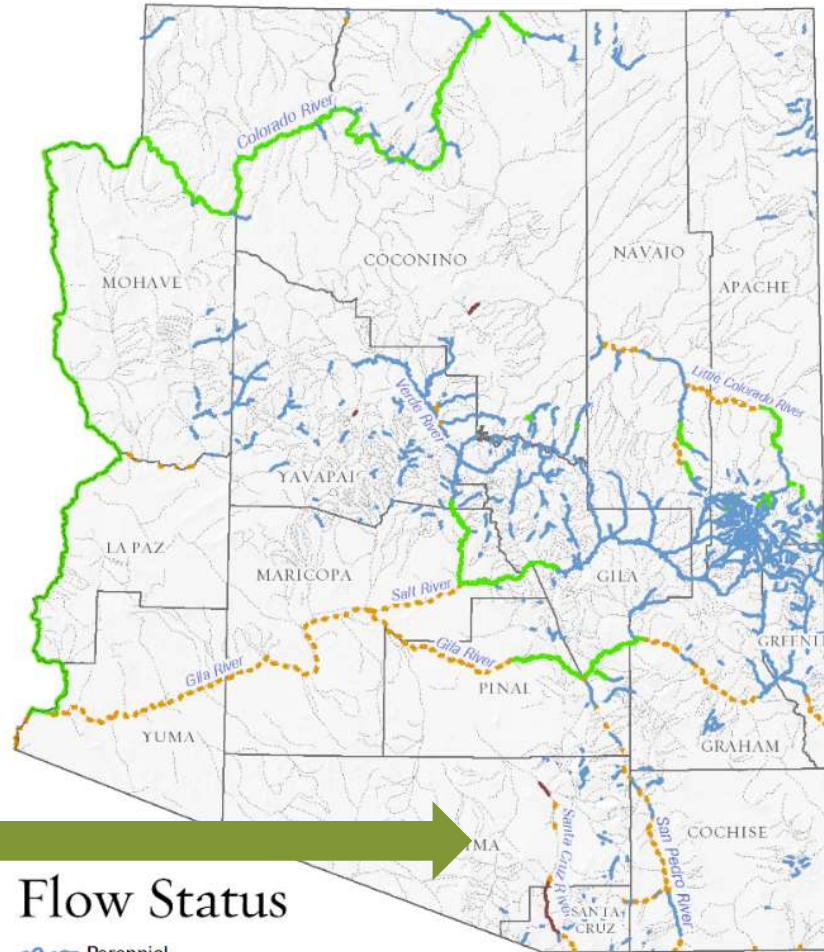
Claire Zugmeyer








©Bill Hatcher/Sonoran Institute, 2018

The Santa Cruz River: from Mexico to Marana, is a living, flowing river and the foundation of community health and prosperity.





Flow Status

-  Perennial
-  Formerly Perennial
-  Regulated
-  Effluent Dominated (May Be Formerly Perennial)
-  Intermittent or Ephemeral

The Nature Conservancy 
Protecting nature. Preserving life.™

Flow status data created from TNC Freshwater Assessment, available from azconservation.org



SONORAN
INSTITUTE

Santa Cruz River Watershed





Santa Cruz River near
Tumacácori, 2015



Santa Cruz River near Ina Road, 2014

T. Moody



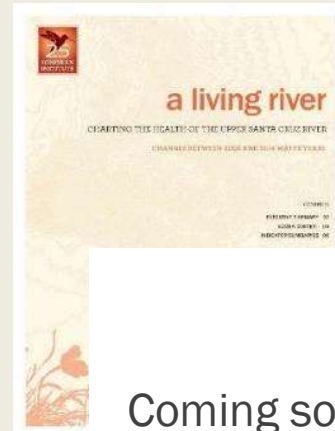


Sonoran Institute



SONORAN
INSTITUTE

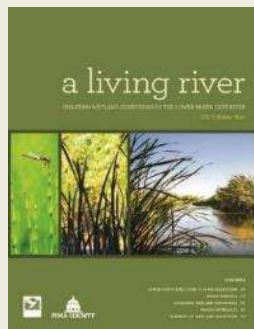
Living River report series tracks improvements on Santa Cruz River near Nogales



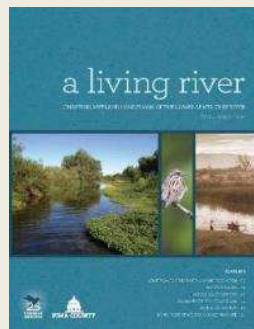
Coming soon
2008-2018
water years

- Effluent stretch in Santa Cruz County
- 2008-2010 water years
- 2008-2014 water years online summary

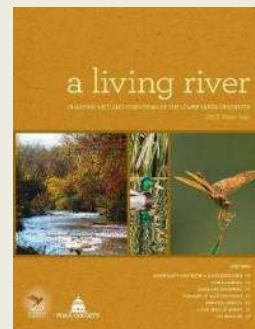
Living River reports expand to Tucson reach in partnership with Pima County



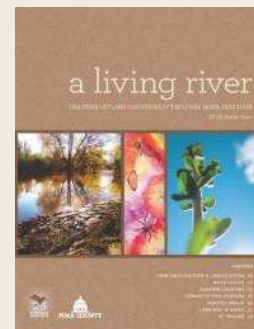
2013
Baseline



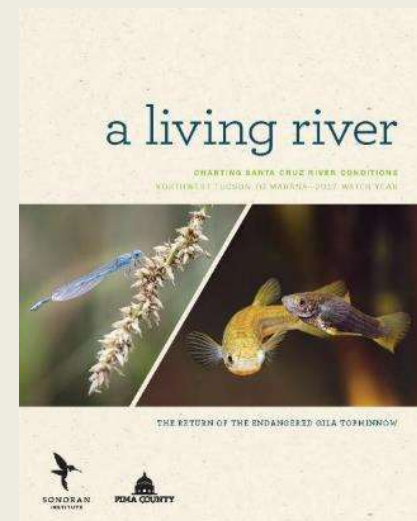
2014



2015



2016



2017 Water Year



Santa Cruz near Tucson





Pima County

Water quality and clarity improved



Pima County

Cloudy water, May 2013

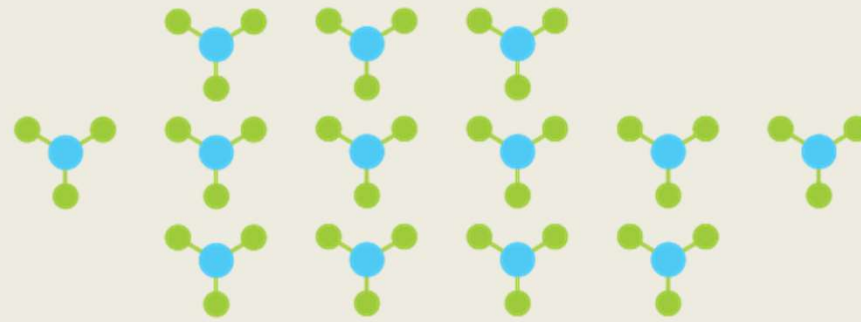


Pima County

Clear water, June 2014

Little to no ammonia

2013 average



13 mg/L ammonia

2017 average



1 mg/L ammonia

Increased Fish Diversity



Western mosquitofish



Green sunfish



Bluegill sunfish



Black bullhead



Common carp



Gila topminnow returns in 2017 after 70 year absence!



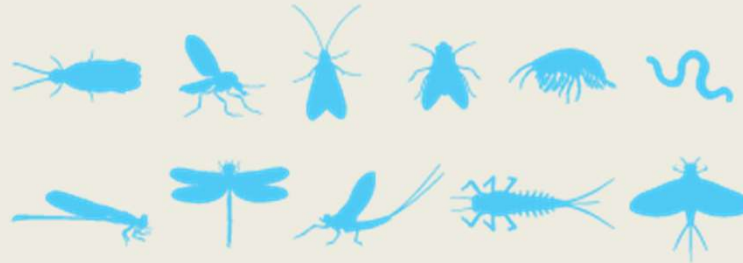
Increased aquatic invertebrate diversity

2013 baseline



5

2017



11

Number of species
average

Sustained increase in recharge reduces flow extent



	Flow In June	Dry Days At Trico Rd
2013	23 miles	0
2014	19 miles	94
2015	16 miles	244
2016	22 miles	109
2017	21 miles	67



River valued for open space



Open space for connecting with nature

Replenishes groundwater supply



Flood Protection

Offers environmental resilience

Cultural identity



Natural habitat

Recreational & travel corridor

Community space



Personal financial benefit





Manage for wildlife habitat



The **Next** Steps

- Secure water for the river
- Identify conservation and restoration opportunities
- Integrate community values and priorities with river management



learn more:
sonoraninstitute.org



SONORAN
INSTITUTE

donate today!
sonoraninstitute.org/donate

your support builds a more vibrant future

Sonoran Institute
100 N. Stone Ave., Suite 400
Tucson, AZ 85701
sonoraninstitute.org



SONORAN
INSTITUTE