



# WaterReuse Meeting HCP Update

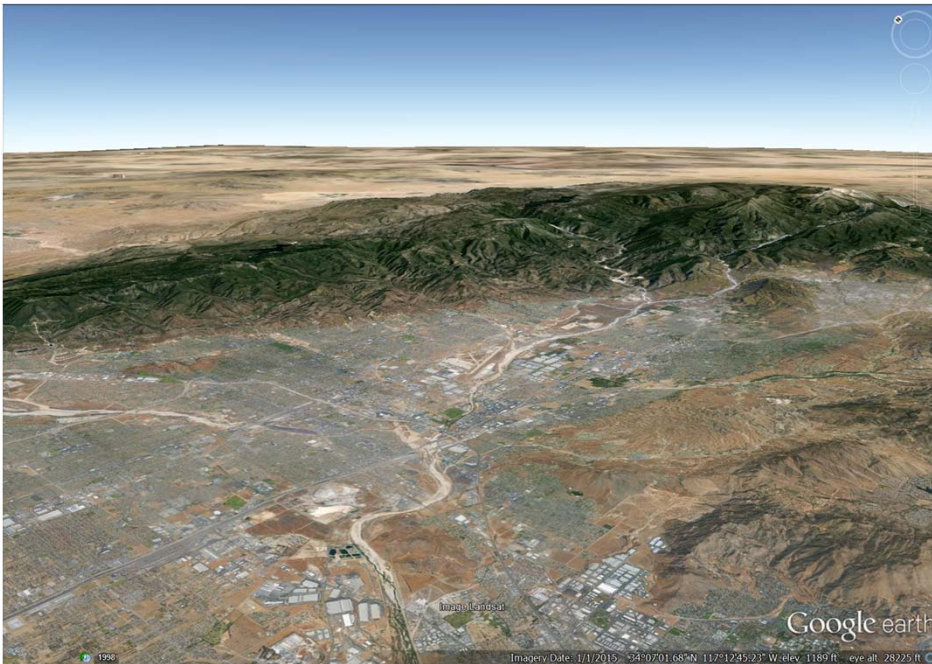
May 21, 2019

Heather Dyer

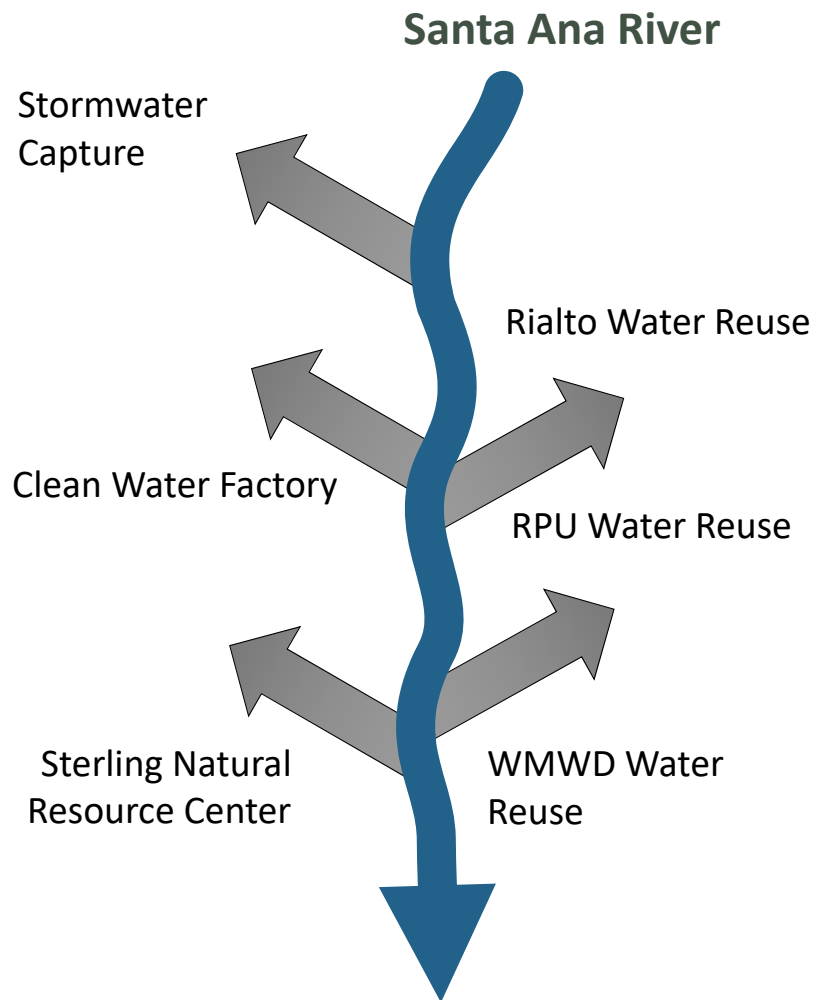
San Bernardino Valley Municipal Water District



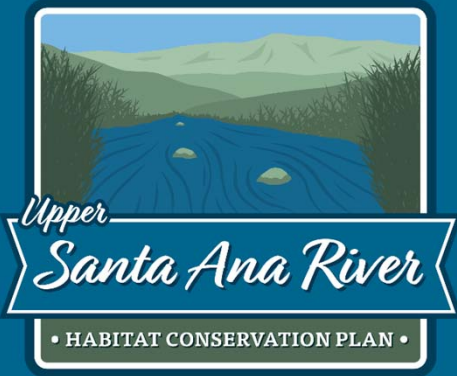
❑ How do we meet water supply needs while protecting the needs of a functional riverine ecosystem?



# Cumulative Impacts of Water Projects







# COLLABORATION

“Many stakeholders whose mutual destinies are held hostage to the complex problems of an interdependent environment should look to the collaborative method for an alternative, and often more cost-effective, strategy.” *Jean Lipman-Blumen*

## Inland Empire water agencies pool resources to save Santa Ana sucker

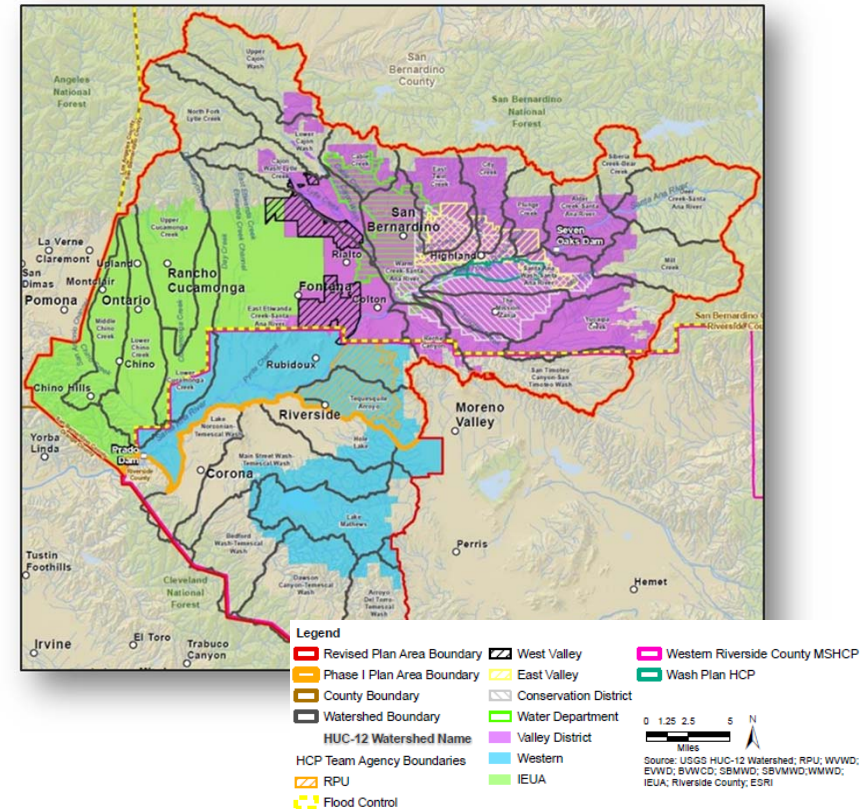


Brett Mills (L), Tawny Hoernke (C), both of Southwest Resource Management Association and Heather Dyer (R), water resources project manager for San Bernardino Valley Municipal Water District, look to remove non-native predators that are threatening the Santa Ana sucker fish, in the Rialto Channel portion of the Santa Ana River, Tuesday, March 3, 2015. The goal is to ...

# HCP PARTNERS

## ➤ HCP Team includes twelve (12) participating agencies:

- San Bernardino Valley Municipal Water District
- San Bernardino Valley Water Conservation District
- San Bernardino Municipal Water Department
- Western Municipal Water District
- East Valley Water District
- West Valley Water District
- Riverside Public Utilities
- Inland Empire Utility Agency
- City of Rialto
- Orange County Water District
- Metropolitan Water District of Southern California
- Southern California Edison



# COVERED SPECIES

## Plants

Slender-horned spineflower  
Santa Ana River woolly-star

## Invertebrates

Delhi Sands flower-loving fly

## Fishes

Santa Ana sucker  
Arroyo chub  
Santa Ana speckled dace

## Amphibians and Reptiles

Arroyo toad  
Western spadefoot  
Mountain yellow-legged frog  
Western pond turtle  
South coast garter snake  
California glossy snake

## Birds

Least Bell's vireo  
Southwestern willow flycatcher  
Yellow-breasted chat  
Western yellow-billed cuckoo  
Tricolored blackbird  
Burrowing owl  
Coastal California gnatcatcher  
Cactus wren

## Mammals

San Bernardino kangaroo rat  
Los Angeles pocket mouse



Photo: SB County Public Works



Photo: Cornell Lab of Ornithology



Photo: RCRCO



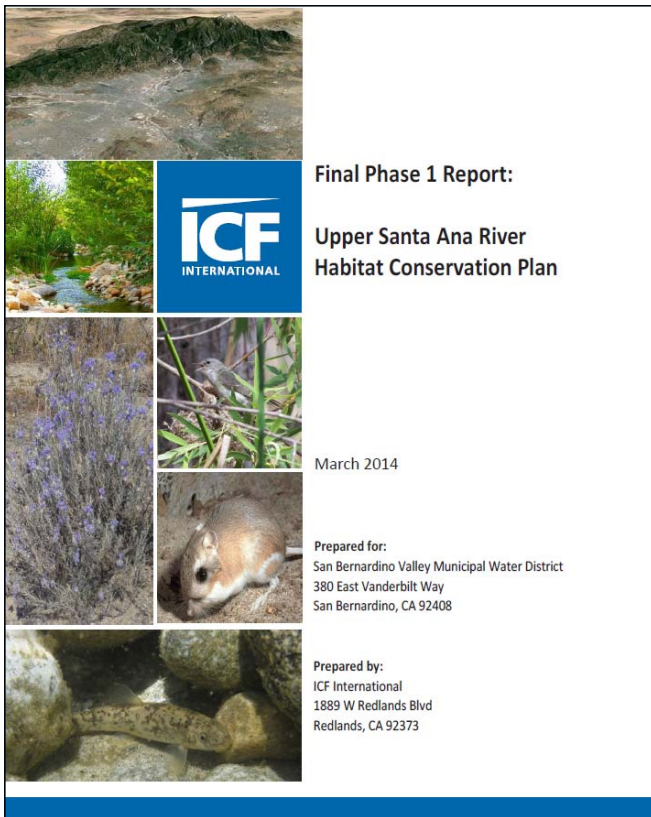
Photo: San Diego Zoo

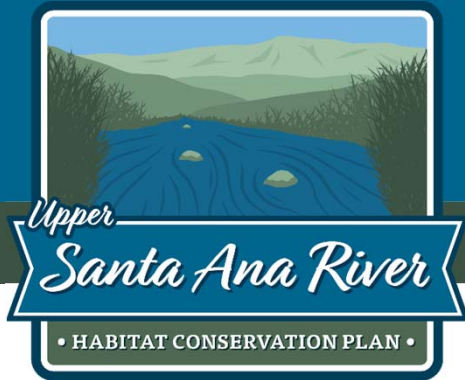


# HCP COVERED ACTIVITIES

Covered Activities have been subdivided into the following categories:

1. **Treatment Facilities** – activities related to construction of new water treatment plants and associated facilities and operations and maintenance of existing and new water treatment plants and associated facilities.
2. **Diversions** – activities related to construction of new structures associated with diversion operation and operations and maintenance of existing and new diversion structures.
3. **Recharge Basins** – activities related to construction of new recharge basins and operations and maintenance of existing and new recharge basins.
4. **Flood Control** – activities related to the construction of new flood control structures and the operation and maintenance of existing and new flood control facilities.
5. **Wells and Water Infrastructure** – activities related to the creation of new wells and associated development (pipelines, access roads, reservoirs, bridges) and the operations and maintenance of existing wells and associated development.
6. **Solar Energy Development** – activities related to construction and maintenance of new solar projects.
7. **General Property and Facility Maintenance** – activities related to new and existing property and facility maintenance.
8. **Routine Operations and Maintenance** – actions that occur repeatedly in one location and/or in many locations over a wide area (e.g., bank stabilization, storm-damage repair, maintenance of facilities).
9. **Habitat Enhancement and Monitoring** – activities that support the restoration and maintenance of habitat values in the HCP Preserve.





# Balanced Approach



## Covered Activities' Impacts

- Reduced Surface Hydrology
- Loss of Riparian Vegetation
- Decreased Function of Habitat
- Acres of Habitat Disturbed
- Negative Effects on Uplands
- Negative Changes in Substrate

## Conservation Benefits to Species

- + Beneficial Changes to Hydrology
- + Increased Riparian Vegetation
- + Improved Function of Habitat
- + Preservation of Habitat
- + New Occupied Habitat
- + Reduced Threats





# HCP Conservation Strategy



# Comprehensive Approach

- ☐ Providing Minimum Flow to sustain Habitat
- ☐ Restoring refugia habitat along Santa Ana River
- ☐ Expanding distribution of fish to avoid catastrophic loss
- ☐ Building water projects to provide benefits to habitat





# Tributaries Restoration



Four Restoration Sites include:

- Hidden Valley Creek
- Lower Hole Creek
- Anza Creek
- Old Ranch Creek
- Evans Creek – In Planning
- Sunnyslope Creek – In Planning





## Upper Santa Ana River Integrated Environmental Services

### ENVIRONMENTAL COMPLIANCE FOR COVERED ACTIVITIES

#### Incidental Take Permits

- Federal ESA Section 10 Habitat Conservation Plan (USFWS)
- California ESA 2081 Permit (CDFW)

#### Aquatic Resource Permits

- Clean Water Act 404/NW Permit (USACE)
- Clean Water Act 401 Water Quality Certification (RWQCB)
- Streambed Alteration Agreement (CDFW)



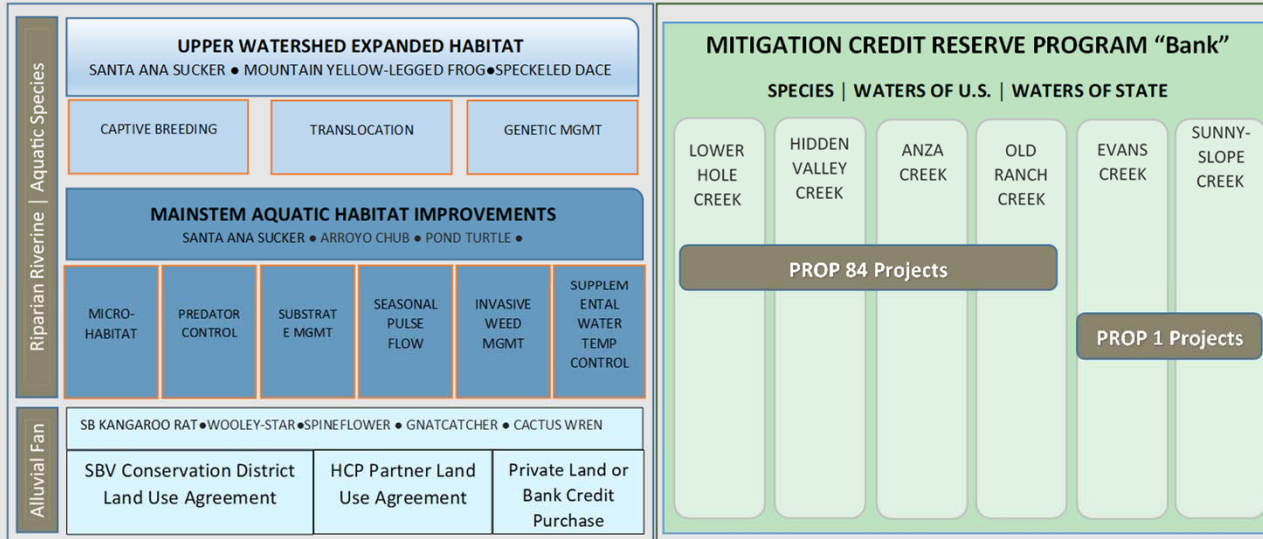
Species Conservation Values Applied to HCP



Aquatic Resource Values Applied to Project Permits



### HABITAT CONSERVATION AND MITIGATION PROGRAM



MONITORING & MANAGEMENT PROGRAM

# HCP Timeline

## HCP Document

- Public Review Draft: June/July 2019
- Final Plan Document: Fall 2019

## CEQA- EIR

- Public Review Draft: June/July 2019
- Final Plan Document: Fall 2019

## NEPA - EIS

- Effort Driven by USFWS
- Fall 2019

## Implementation

- Form Joint Powers Authority: Summer 2019
- Approve Joint Funding Agreement: Summer/Fall 2019
- Development Long Term Monitoring & Mgmt. Plan: Begin August 2019

# Tributaries Restoration Timeline

## Tributaries Restoration

- Contractor Selection Process: Summer 2019
- Plant/Seed Procurement – Summer 2019
- Construction: Winter 2019/2020

## CEQA - EIR

- NOP & Scoping Meeting: July 2018
- Draft EIR: May 2019
- Final EIR: Summer 2019

## Environmental Permits

- CDFW Streambed Alteration Agreement
- Corps of Engineers 404 Permit
- RWQCB 401 Water Quality Certification
- Section 7 Consultation for ESA coverage

## Mitigation “Bank”

- Draft Prospectus
- Interagency Review Team Meeting
- Bank Enabling Instrument Development

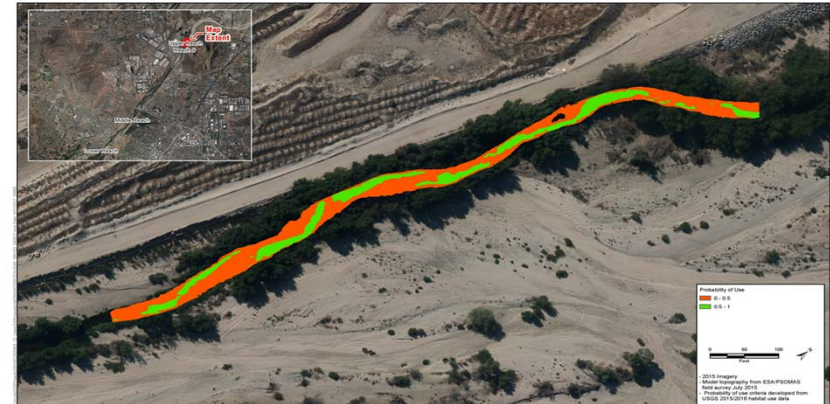


# UP NEXT SUMMER 2019:

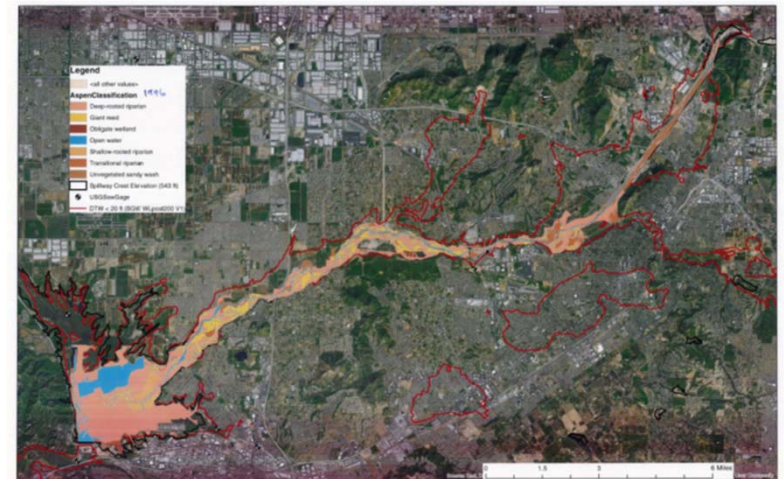
## Monitoring & Adaptive Management Program

- Effects Analyses are based on the Best Available Science
- Using best tools available – making predictions based on modeling
- A robust monitoring program will be required to verify effects from reduced flow
- Tools will be developed to manage unexpected outcomes
- HCP Partners honor conservation commitments and stay w/in take limit
- USFWS honors commitment of “no surprises”

Low Suitability  
High Suitability



Upper Santa Ana River Habitat Conservation Plan DRAFT Santa Ana Sucker Probability of Use in the Santa Ana River Downstream of RIX - ESA Upper Reach - 51.5 cfs Figure XX



## Questions?



Photo: SAWA