

Countywide Water Reuse Master Plan

August 24, 2018

Luis Jaimes, P.E., P.M.P.
Senior Project Manager
Recycled and Purified Water Unit



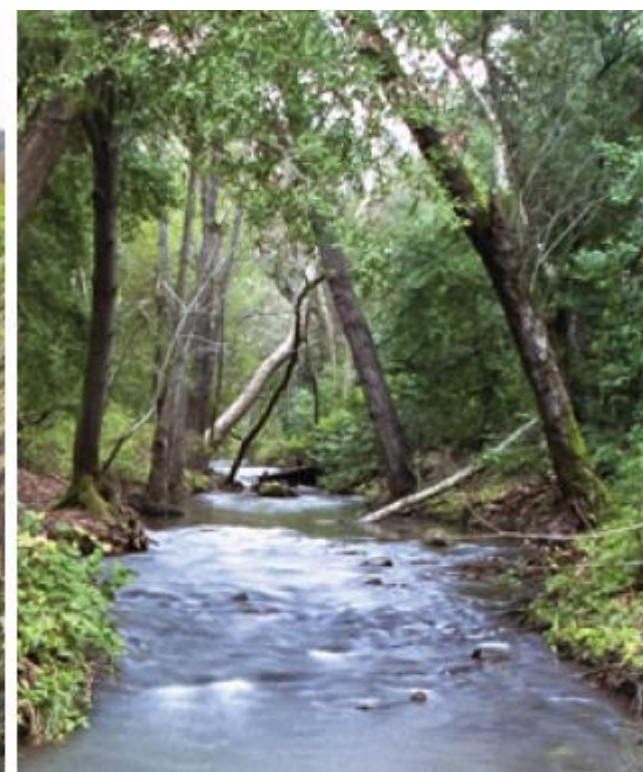
District Mission



**CLEAN, RELIABLE
WATER**



FLOOD PROTECTION

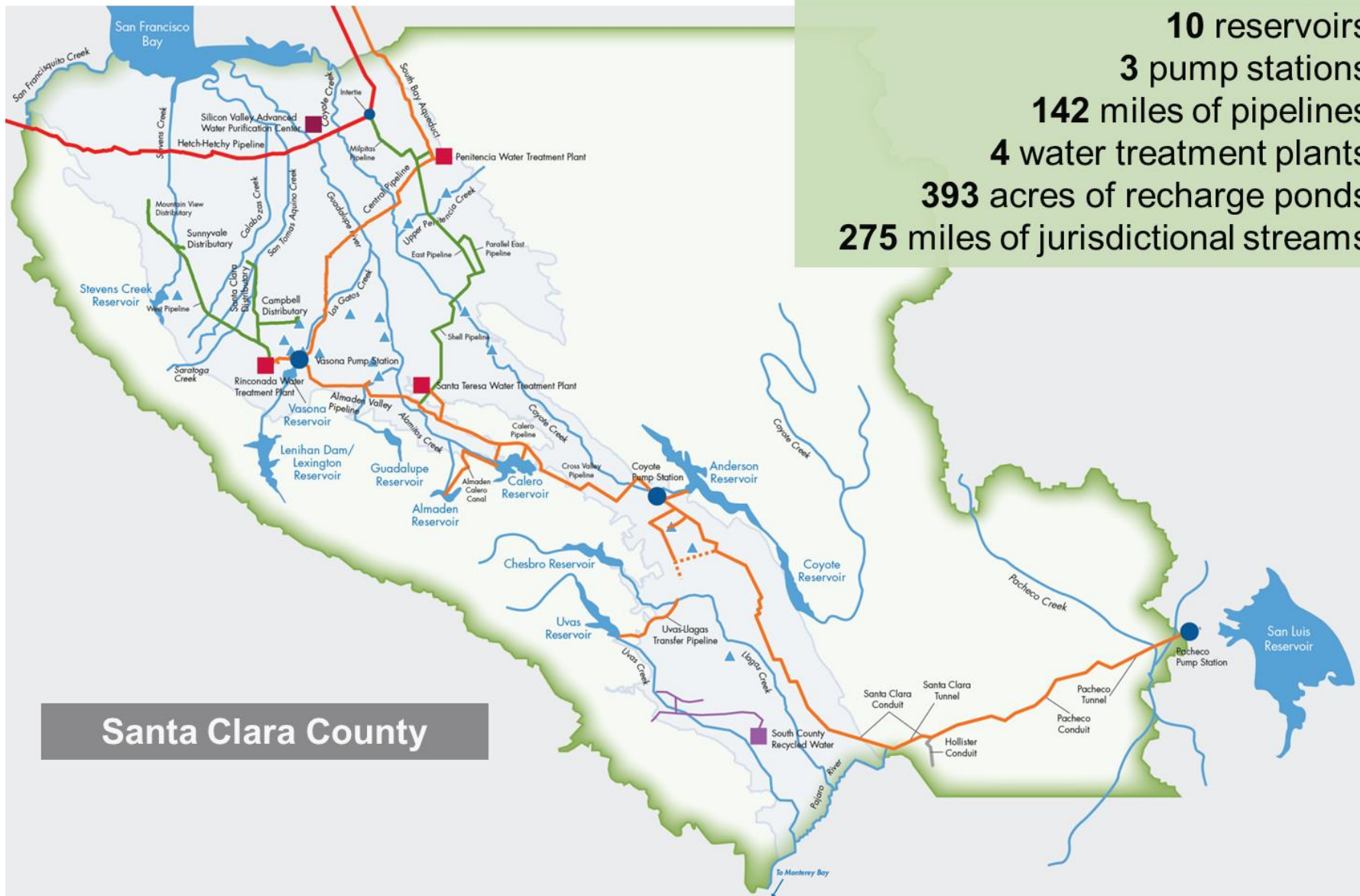


**HEALTHY CREEKS &
ECOSYSTEMS**

A Comprehensive, Flexible Water System

10 reservoirs
3 pump stations
142 miles of pipelines
4 water treatment plants
393 acres of recharge ponds
275 miles of jurisdictional streams

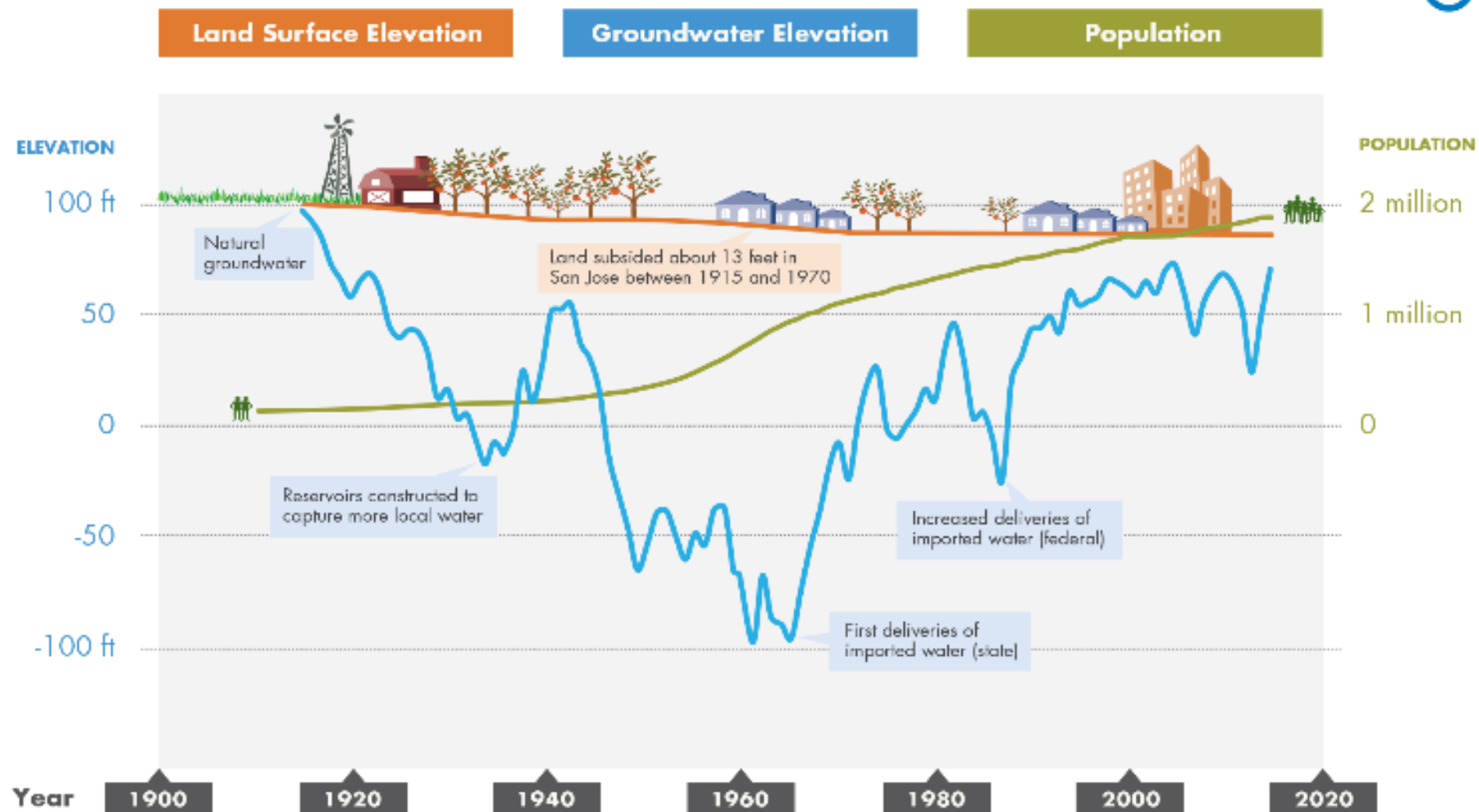
Santa Clara County



Santa Clara County Groundwater

SANTA CLARA COUNTY GROUNDWATER AT-A-GLANCE

a graphic representation not intended as a technical exhibit



Sources of Our Water

Local Water

- Natural groundwater
- Reservoirs

Imported Water

- Delta conveyed
- Hetch Hetchy

Recycled Water

- Wastewater Treatment
- Advanced Purification



Policy and Master Planning Goals

Ends Policy E-2 states that there is a reliable, clean water supply for current and future generations. Accordingly, the following goals and objectives are adopted:

OBJECTIVES

2.1.4. Protect, maintain and develop **recycled** water.

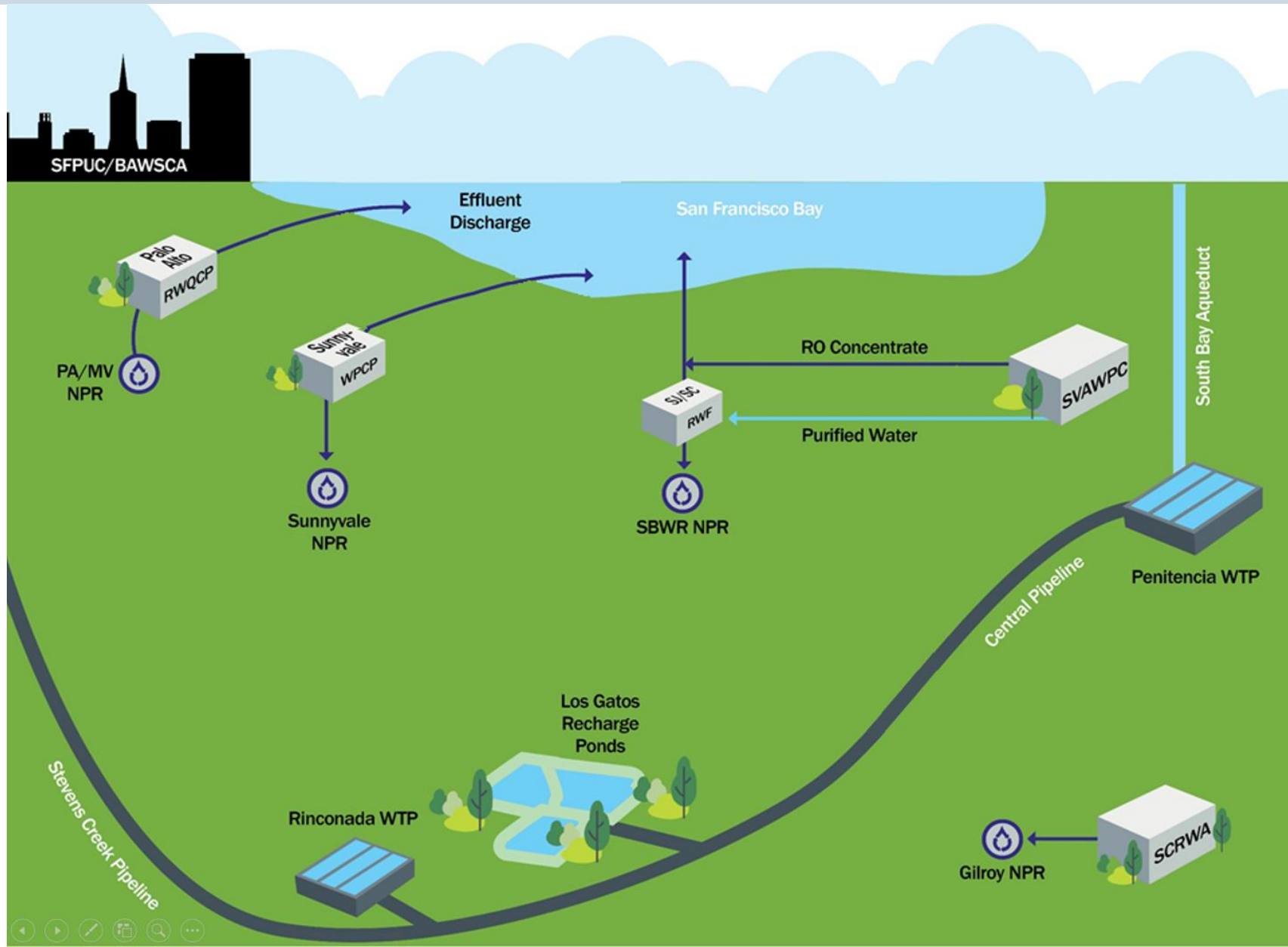
OUTCOME MEASURES

2.1.4.a. At least 10% of annual recycled water production as a percentage of total County water demands by 2025

WATER SUPPLY MASTER PLAN

24,000 AFY Potable Reuse Capacity by 2025

Existing Systems in Santa Clara County



Silicon Valley Advanced Water Purification Center



- ▶ Online in March 2014, provides up to 8MG of purified water from secondary effluent.
- ▶ Purpose:
 - ▶ To reduce salinity (TDS) of South Bay Water Recycling System.
 - ▶ Platform to conduct potable reuse studies and pilot projects.
 - ▶ To engage the public.

Countywide Master Plan Framework

Governance

Regional Planning
& Integration

Water Treatment &
Contributing Sewersheds

Economics
& Funding

Stakeholder
Engagement

Water Quality
& Quantity

Infrastructure,
Assets, & Land

Environmental,
Permitting, Regulations, &
RO Conc. Mgmt.

Public Perception

Schedule & Coordination with other
Planning Efforts

Master Plan Objectives

- ▶ Identify sources and amounts of water available for reuse
- ▶ Determine NPR & PR split
- ▶ Evaluate governance roles & responsibilities and provide recommendations
- ▶ Evaluate potential regional integration
- ▶ Conduct stakeholder engagement

NPR = Non-Potable Reuse

PR = Potable Reuse

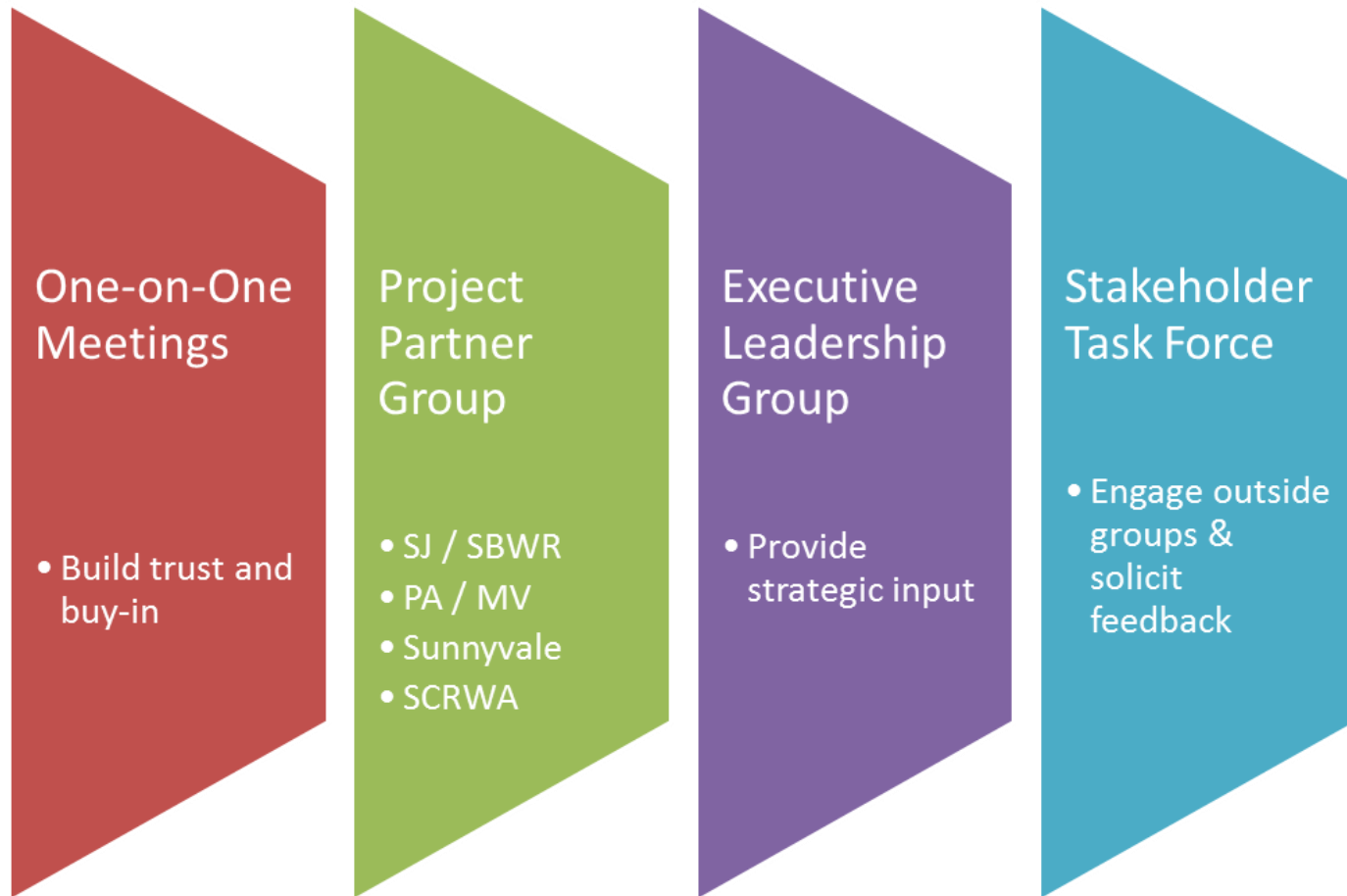
Countywide Master Plan

► Stakeholder Workshops

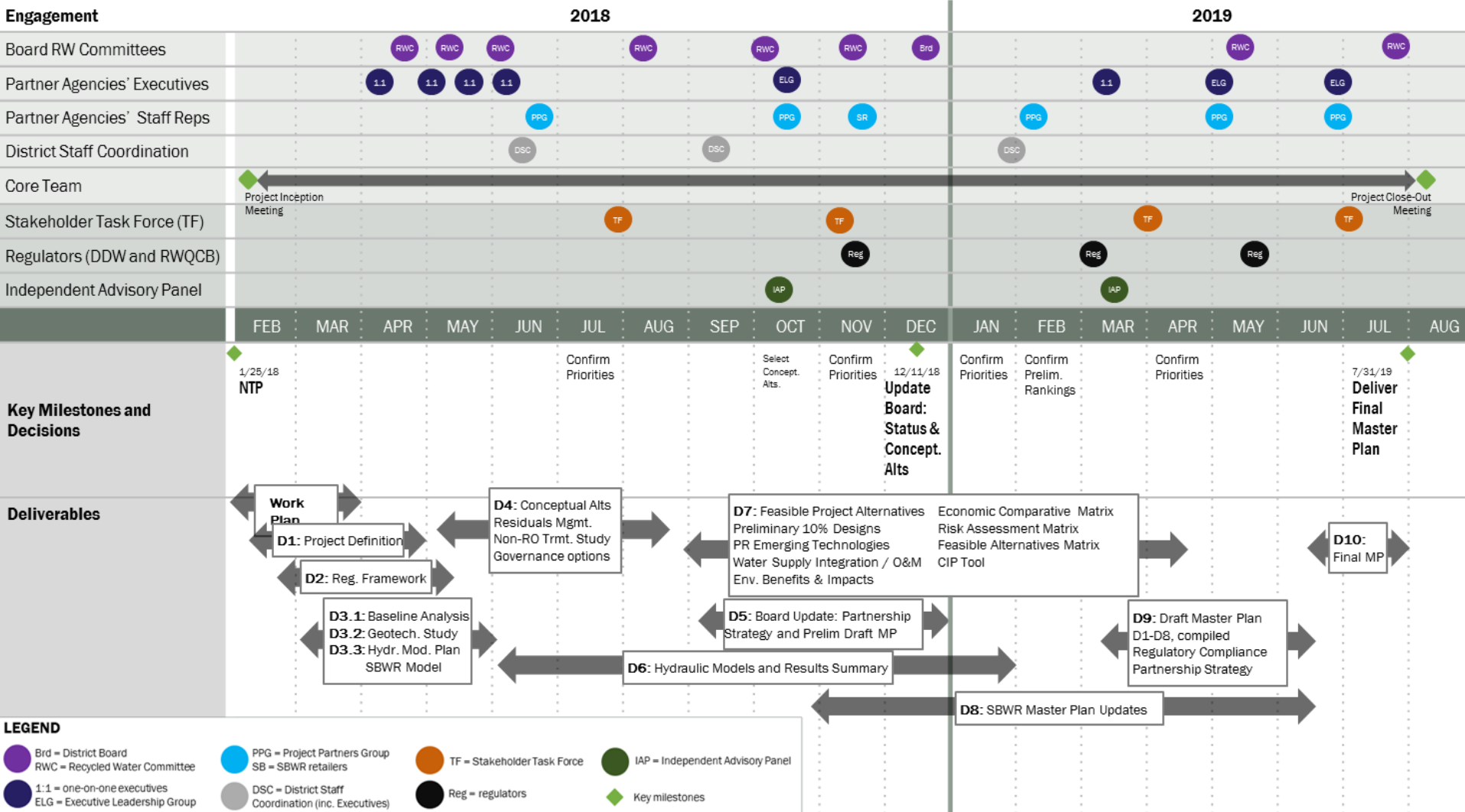
- Producers, retailers, regulators, businesses, environmental organizations, and community groups



Stakeholder Engagement & Collaboration



Countywide Master Plan Schedule



ROC Management Plans (ROCMP)

- ▶ ROCMP Components:
 - ▶ Review of potential treatment options
 - ▶ Site specific evaluations of ROC water quality
 - ▶ Stakeholder workshops
 - ▶ Engineered treatment cell pilot testing
 - ▶ Develop and recommend ROC management plans for each site

