



Central Basin Municipal Water District

WaterReuse Presentation

October 9th 2018

Jacqueline Koontz



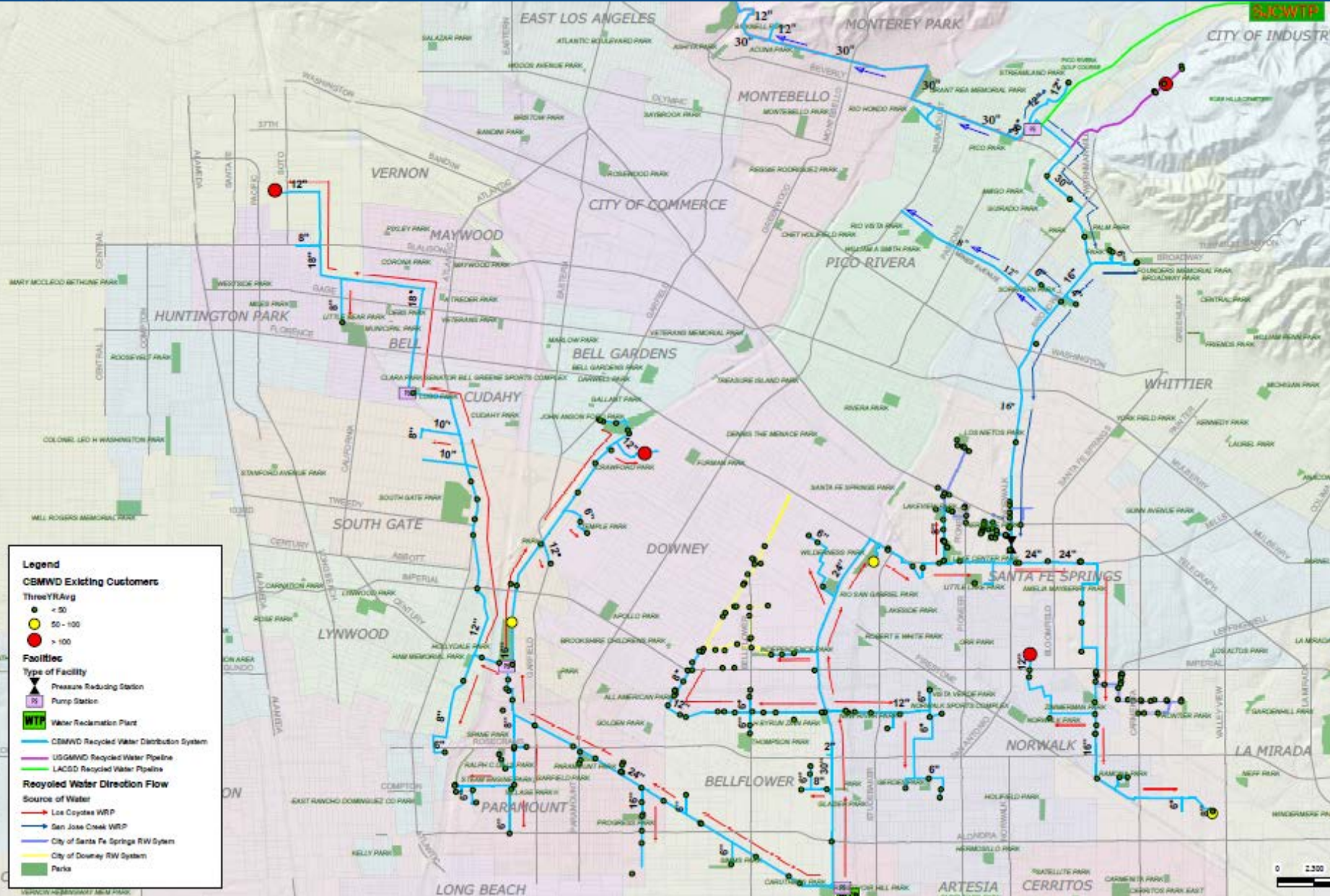
Central Basin Formation

- Established in 1952
- Represent 1.6 million people at Metropolitan Water District of Southern California (MWD)
- Purchase treated potable water from MWD for sale to retail water agencies
- Purchase untreated water from MWD for groundwater replenishment
- Purchase recycled water from Los Angeles County Sanitation Districts and distribute to retail agencies



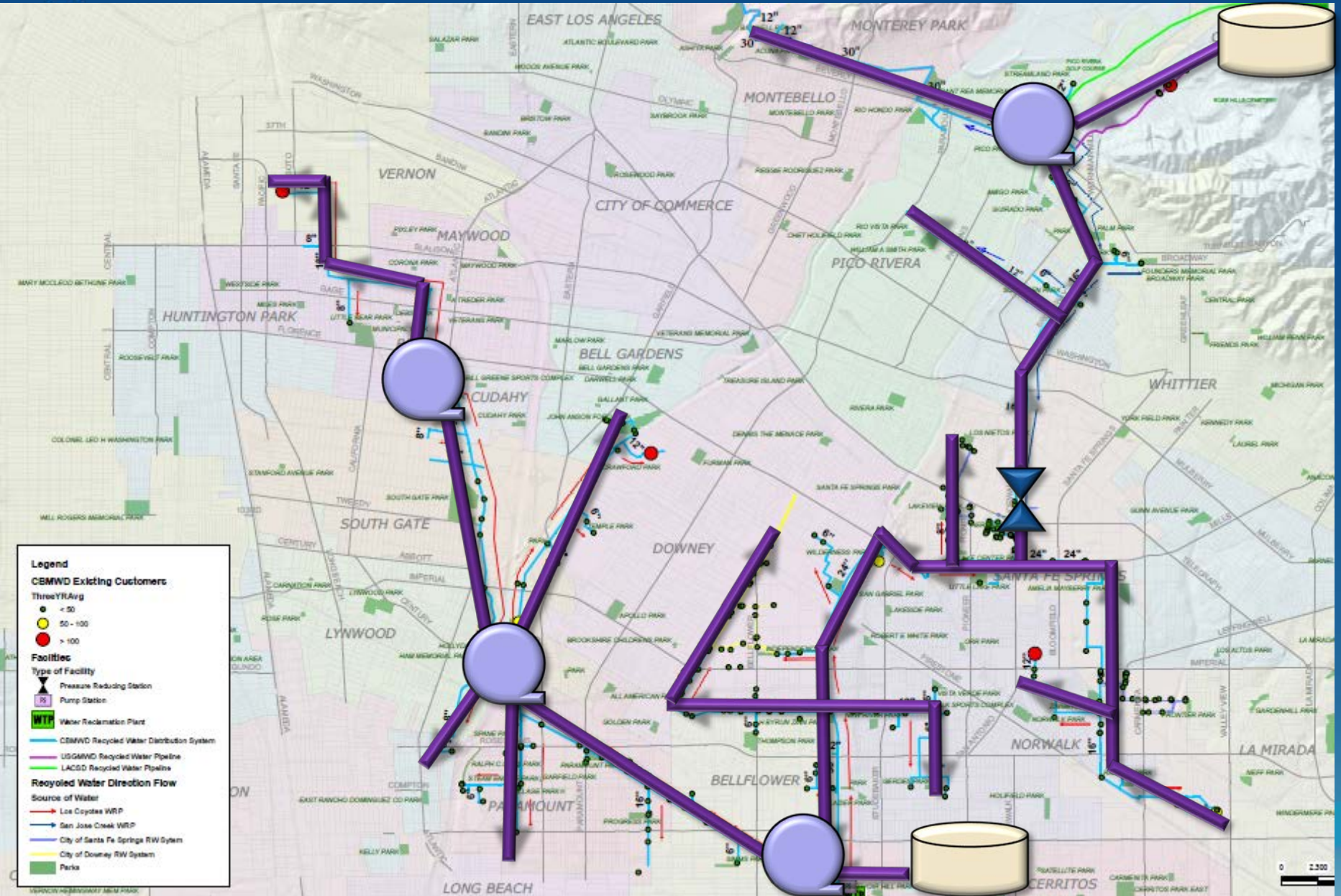


Central Basin Municipal Water District





Central Basin Municipal Water District



Legend

CBMWD Existing Customers

ThreeYRAvg

- < 50
- 50 - 100
- > 100

Facilities

Type of Facility

- Pressure Reducing Station
- Pump Station
- Water Reclamation Plant

Recycled Water Direction Flow

Source of Water

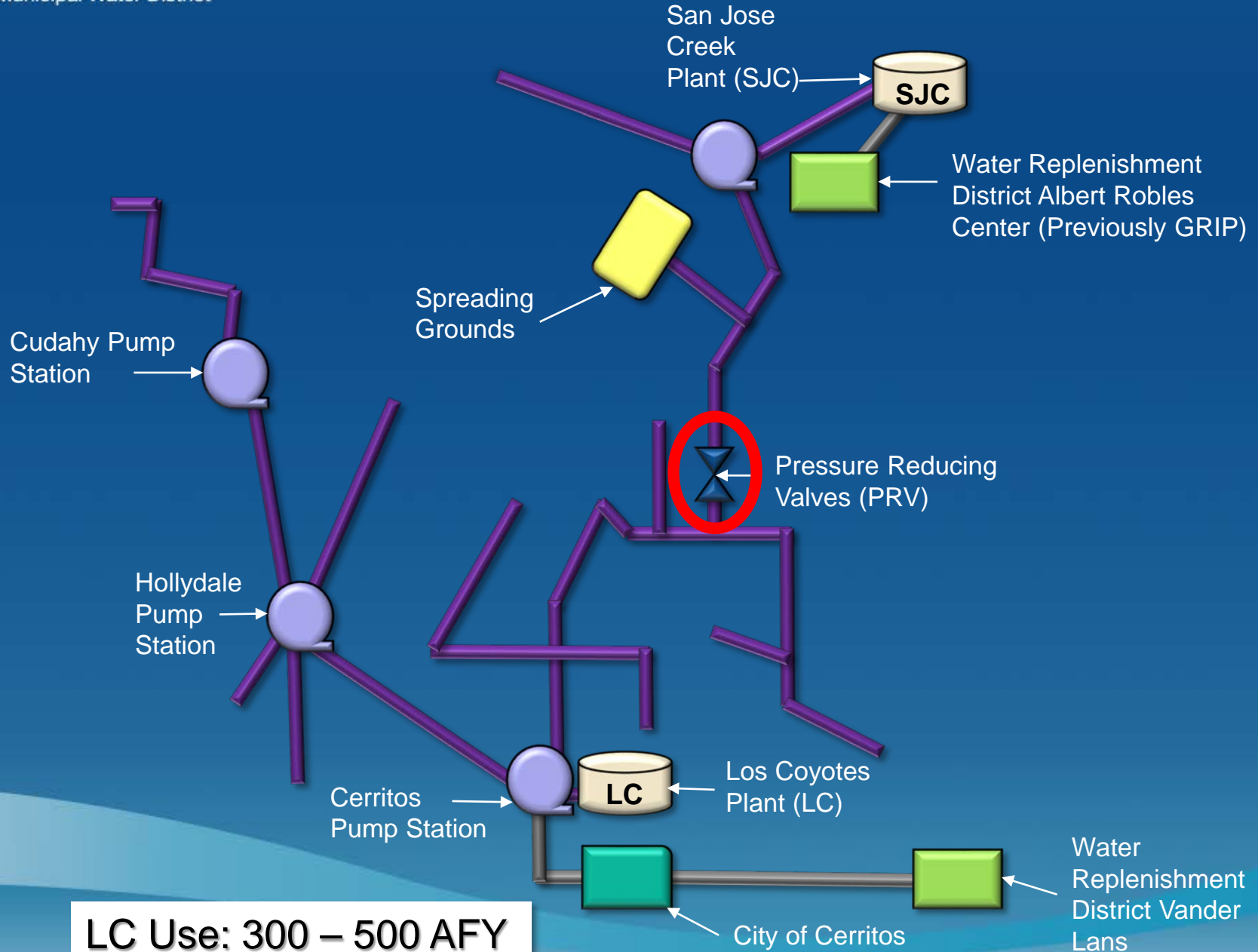
- Los Coyotes WRP
- San Jose Creek WRP
- City of Santa Fe Springs RW System
- City of Downey RW System
- Parks

Recycled Water Pipeline

- CBMWD Recycled Water Distribution System
- UGMWD Recycled Water Pipeline
- LACGD Recycled Water Pipeline

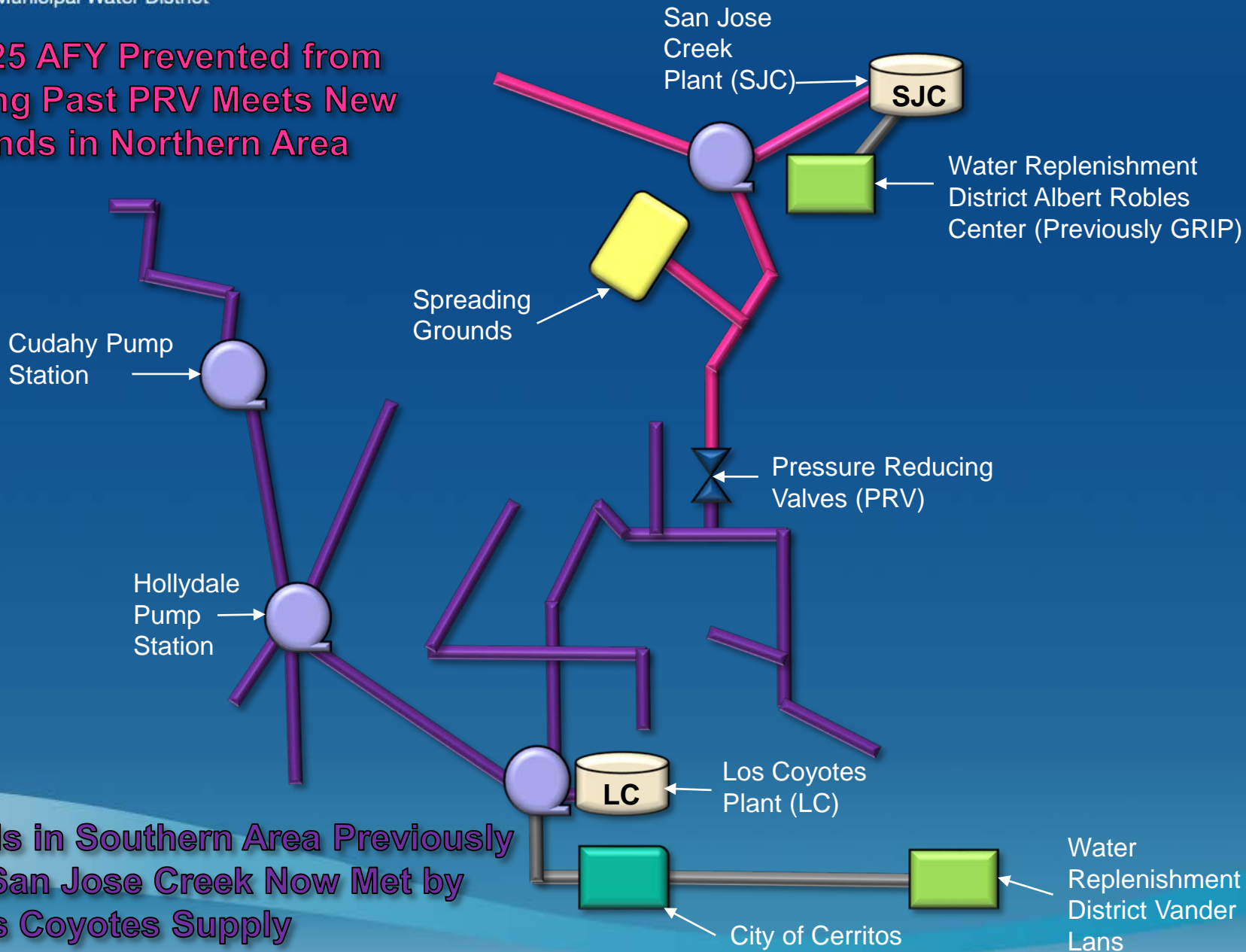


SJC Use: 3,500 – 4,500 AFY



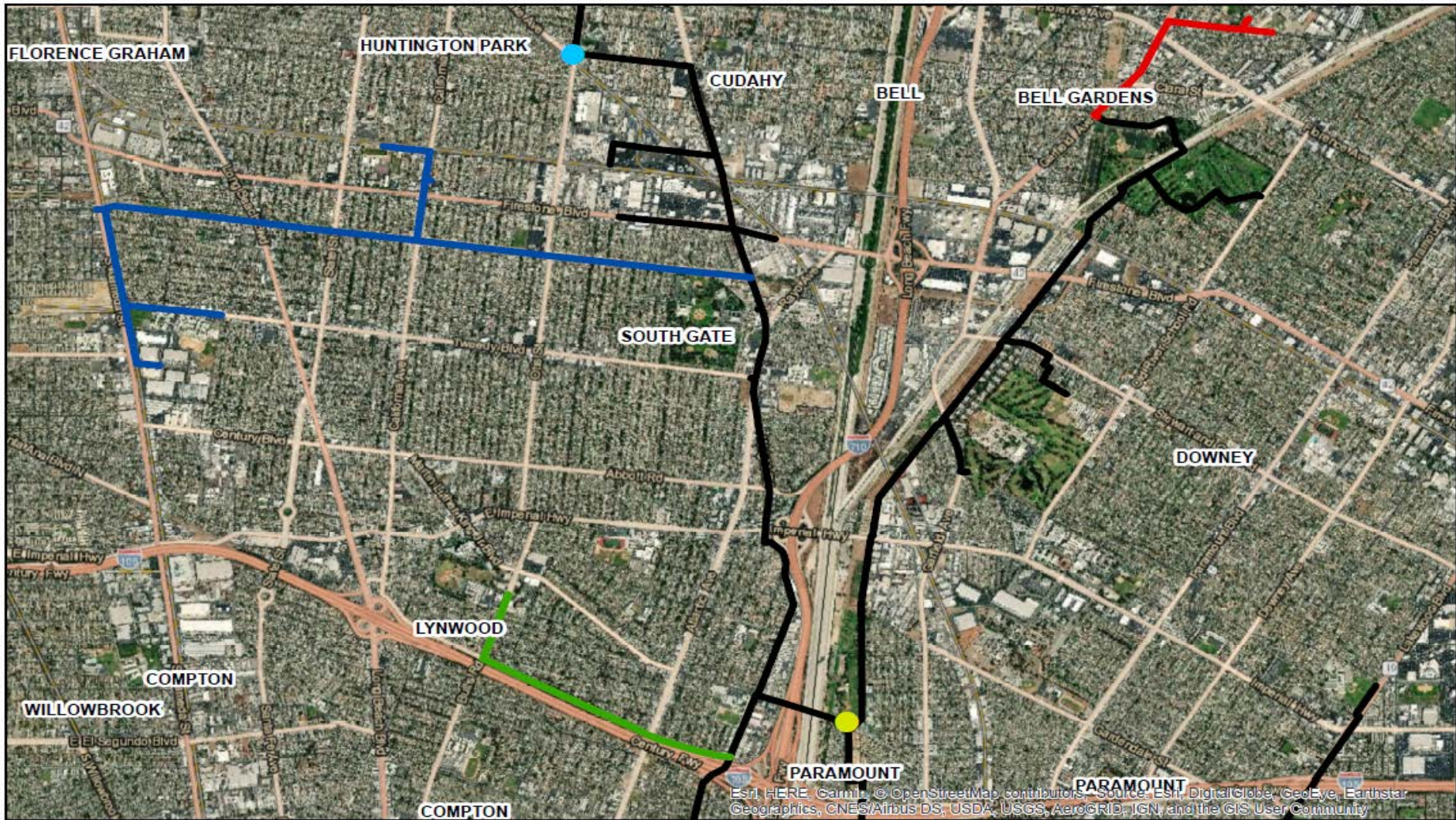
LC Use: 300 – 500 AFY

475-525 AFY Prevented from Flowing Past PRV Meets New Demands in Northern Area

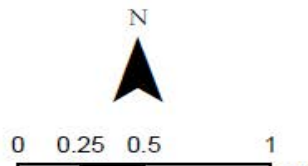


Demands in Southern Area Previously Met by San Jose Creek Now Met by New Los Coyotes Supply

Gateway Cities Project Pipelines



Esri, HERE, Garmin, © OpenStreetMap contributors, Source: Esri, DigitalGlobe, GeoEye, Earthstar Geographics, CNES/Airbus DS, USDA, USGS, AeroGRID, IGN, and the GIS User Community



Gateway Cities Project

- Cudahy Pump Station
- Hollydale Pump Station

— CBMWD Existing Recycled Water System

— South Gate Proposed Pipeline

— Lynwood Proposed Pipeline

— Bell Gardens Proposed Pipeline



Montebello Hills Pipeline



Closest point of Connection Approx. 6,400 LF

Farthest point of Connection Approx. 7,400 LF

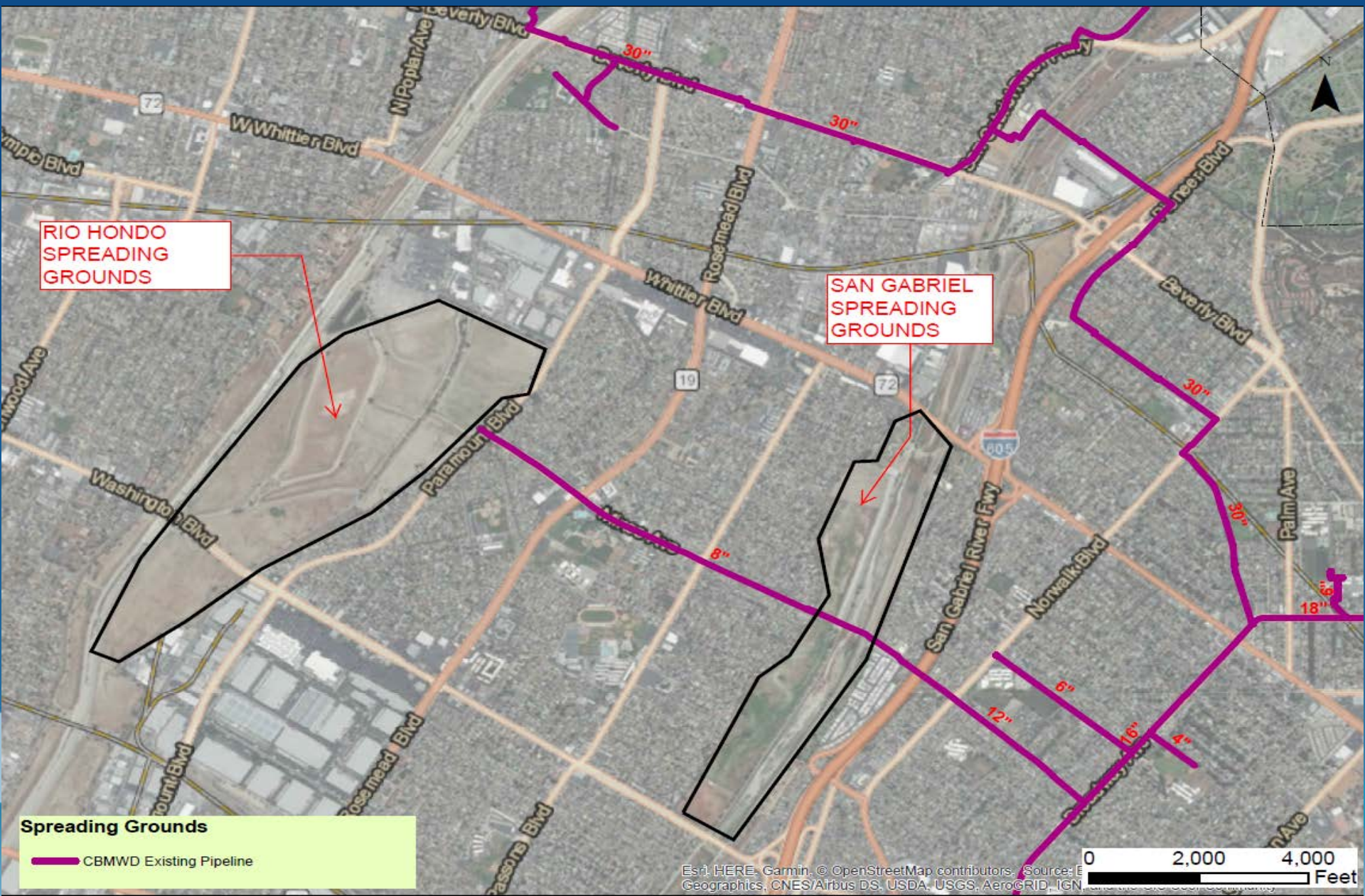
Point of Connection to Existing CBMWD 30" CML&C Steel

Toll Brothers Montebello Hills Project

- CBMWD Recycled Water Distribution System
- Montebello Hills Project**
- Phase I ~ 2,440 LF of C-905 Currently Designed
- Phase II - Public Right of Way ~7,400 LF
- Future On Site Recycled Water Distribution System
- Recycled Water Pump Station Phase II



WRD Groundwater Replenishment



RIO HONDO
SPREADING
GROUNDS

SAN GABRIEL
SPREADING
GROUNDS

Spreading Grounds

— CBMWD Existing Pipeline

Recycled Water Site Conversions



Donald and Joe



Sites Connected

UTC

88 afy

May 2018

Moon Valley Nursery

20 afy

September 2018

Heritage Plaza

3 afy

September 2018

In Process



Legacy HS	11 afy
Legacy Playfield	17 afy
Legacy Middle School	3 afy
Corvallis MS Expansion	17 afy
Montebello Golf Course	255 afy
Albert Robles Center	2 afy
Cal Trans Buell and Mondon	2 afy

Planning

Gateway Cites Project:

South Gate	132 afy
Lynwood	68 afy
Bell Gardens	30 afy

San Gabriel River Parkway Medians

Montebello Hills Pipeline Project 135 afy

WRD Demonstration Project 0-391 afy

Firebaugh HS 12 afy

Foster Road Medians 1 afy

Dennis the Menace Park 11 afy

Downey Median 2 afy

Ralph's Parking Lot 1 afy



