

Castaic Lake Water Agency

L.A. Chapter WaterReuse Meeting

CLWA Recycled Water Program Update

October 11th, 2016





Overview

- What We Do at CLWA
- Water Resources Portfolio
- Recycled Water Timeline
- Existing Recycled Water System
- Recycled Water Master Plan Update
- Recycled Water Phase 2 Update
- Next Steps



What We Do at CLWA

Acquire and Deliver Supplemental Water

- State Water Project
- Dry-Year Water Banks
- Recycled Water

Treat and Distribute Water

- 3 Water Treatment Plants
- 26 Turnouts to 4 Purveyors
- 43 miles of Water Pipelines (Raw and Treated)
- 3.5 miles of Recycled Water Pipelines

Cooperate with other Agencies on Regional Issues

- Groundwater Remediation
- Urban Water Management Plan
- Recycled Water Master Plan
- Salt and Nutrient Management Plan



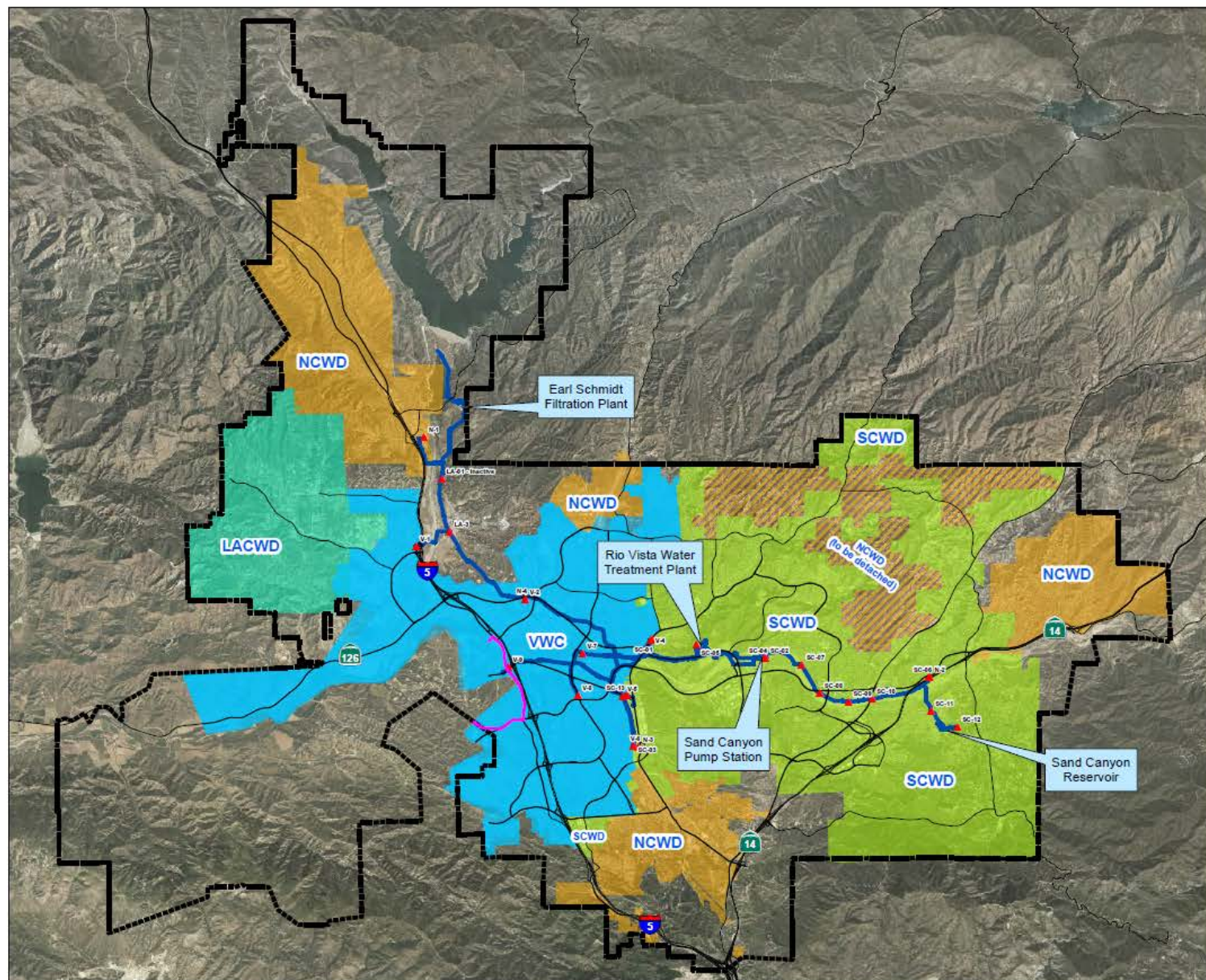
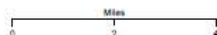
CLWA Water Service Area Boundary and Water Purveyors

Legend

- Freeway and Main Roads
- Turnouts
- CLWA Pipeline
- CLWA Water Service Boundary
- Purveyor**
- LACWD#36
- SCWD
- VWC
- NCWD
- NCWD (to be detach)

This map is for reference only.
CLWA does not warrant the
accuracy and assumes no liability
for errors or omissions.

Created by
CLWA Engineering Dept
in Sep 2018
for reference only

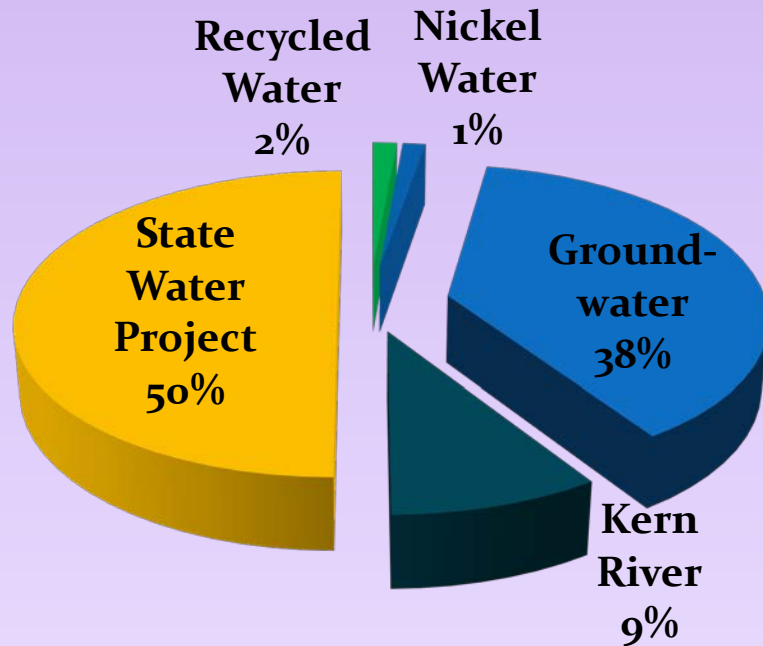


Where Does Our Water Come From?

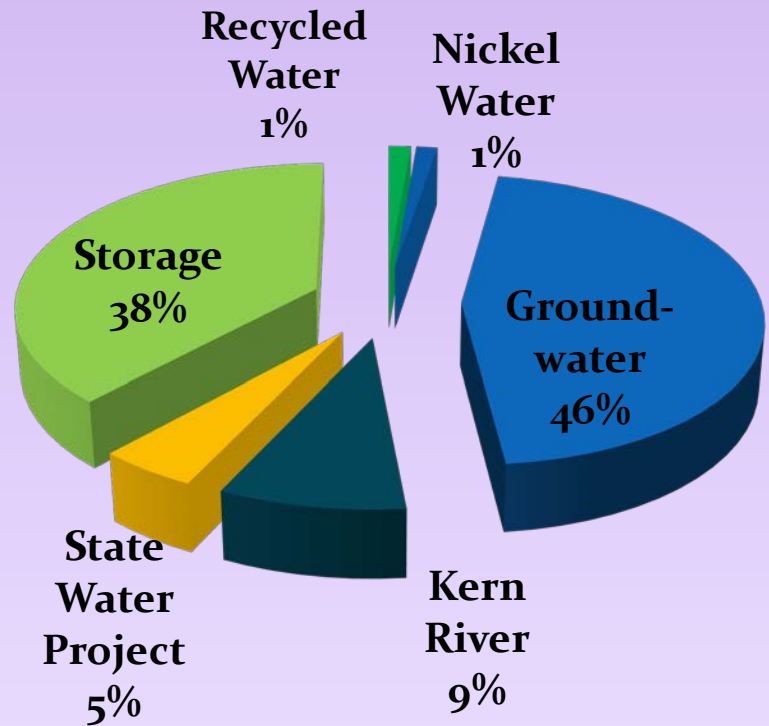
- Imported Sources (15⁰%-60⁰%)
 - State Water Project
 - Kern River
- Banked Water (0⁰%-38⁰%)
- Local Sources – Groundwater (38⁰%-46⁰%)
 - Alluvial Aquifer
 - Saugus Formation
- Recycled Water Sources (1⁰%-2⁰%)
 - Purchased from SCVSD
 - Landscape Irrigation

Normal & Dry Year Water Supplies

Normal Year

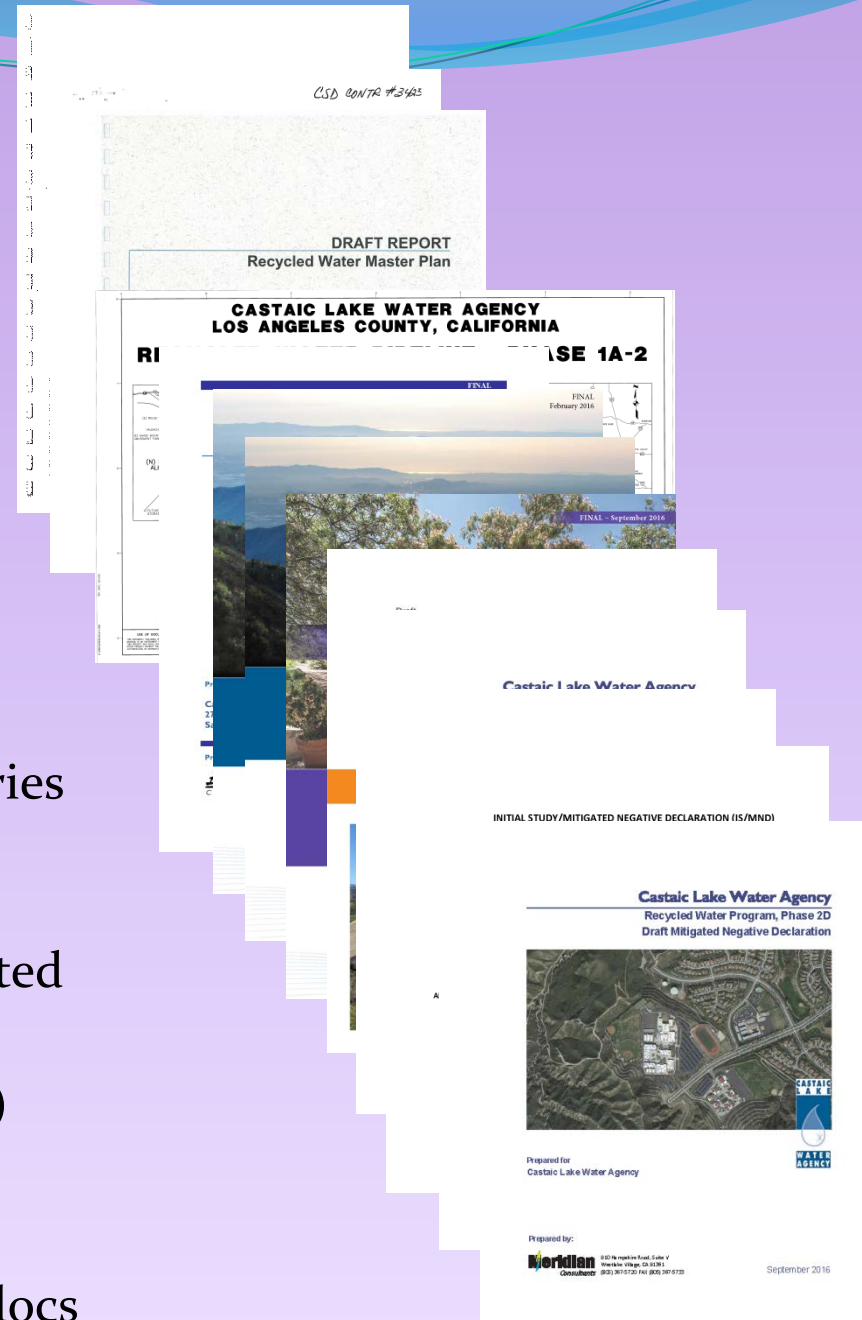


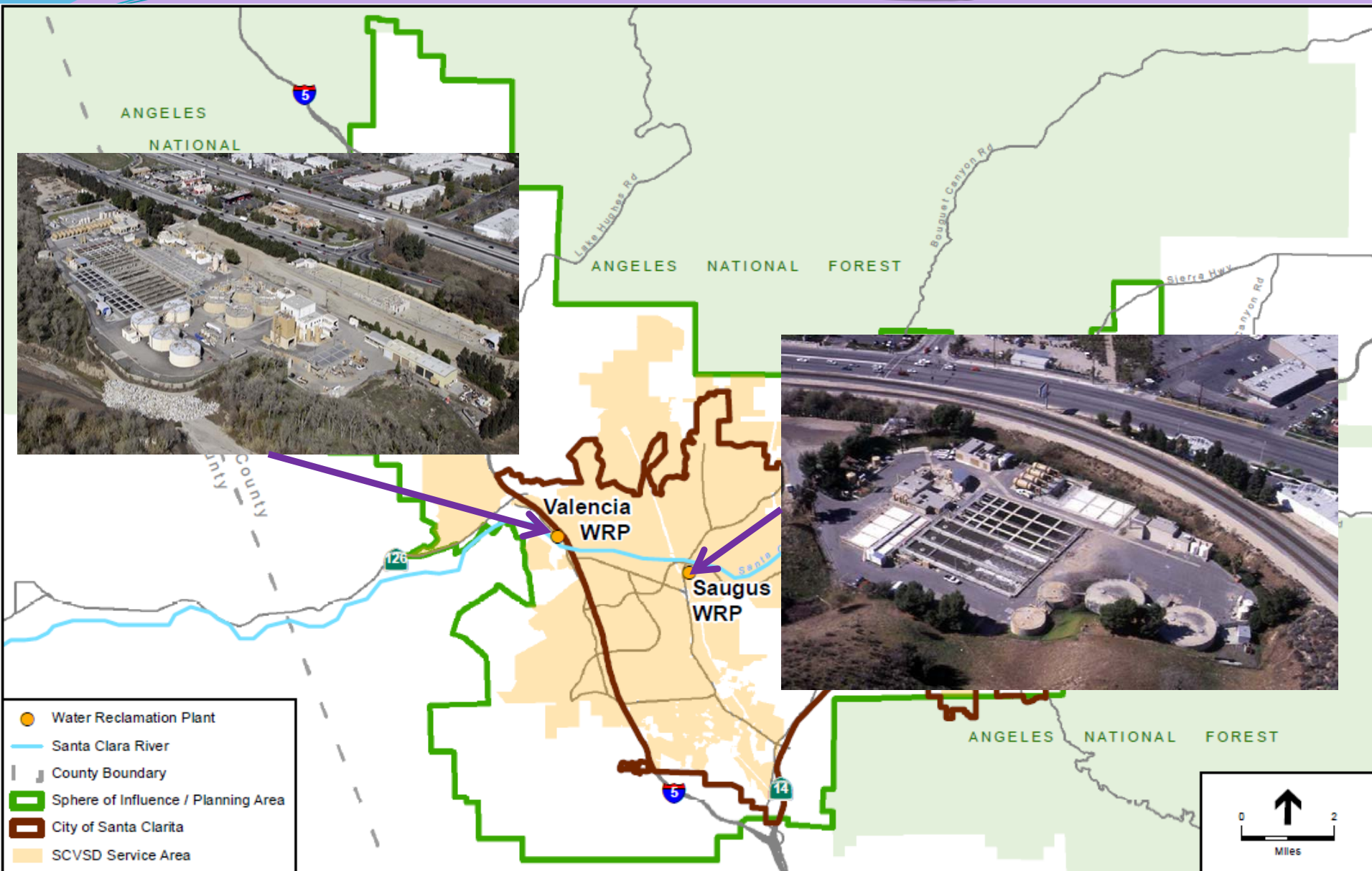
Dry Year



Recycled Water Timeline

- 1993: Reclaimed Water Master Plan (9 Phases - 10,361 AFY Demand)
- 1996: LACSD and CLWA RW Contract (contracted for up to 1,600 AFY)
- 2002: Draft Recycled Water Master Plan (11 Phases - 17,441 AFY Demand)
- 2004: RW Phase 1A Completed, RW deliveries commenced
- 2007: RWMP Program EIR certified
- 2016: SCV RW Rules and Regulations adopted
- 2016: 2015 Urban Water Management Plan
- 2016: Recycled Water Master Plan (RWMP) (4 Alternatives - 12,395 AFY of reuse)
- 2016: RWMP Program EIR
- 2017: Adopt and File Phases 2A-2D CEQA docs





Valencia Water Reclamation Plant

Recycled Water PS-1
Current 4,000 GPM
Ultimate 12,000 GPM

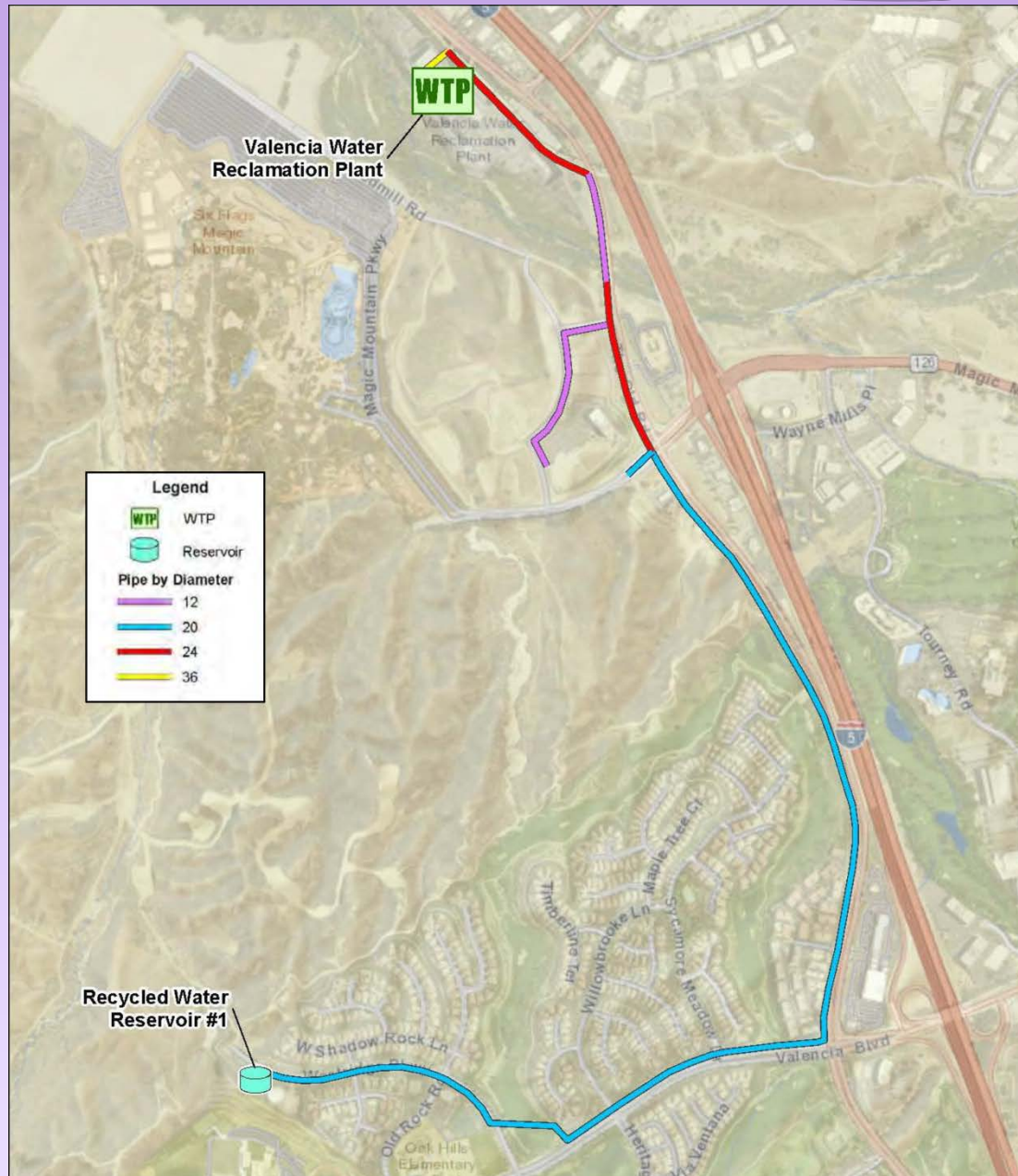


Recycled Water PS-1 - W



Recycled Water PS-1 - N

Existing Phase 1





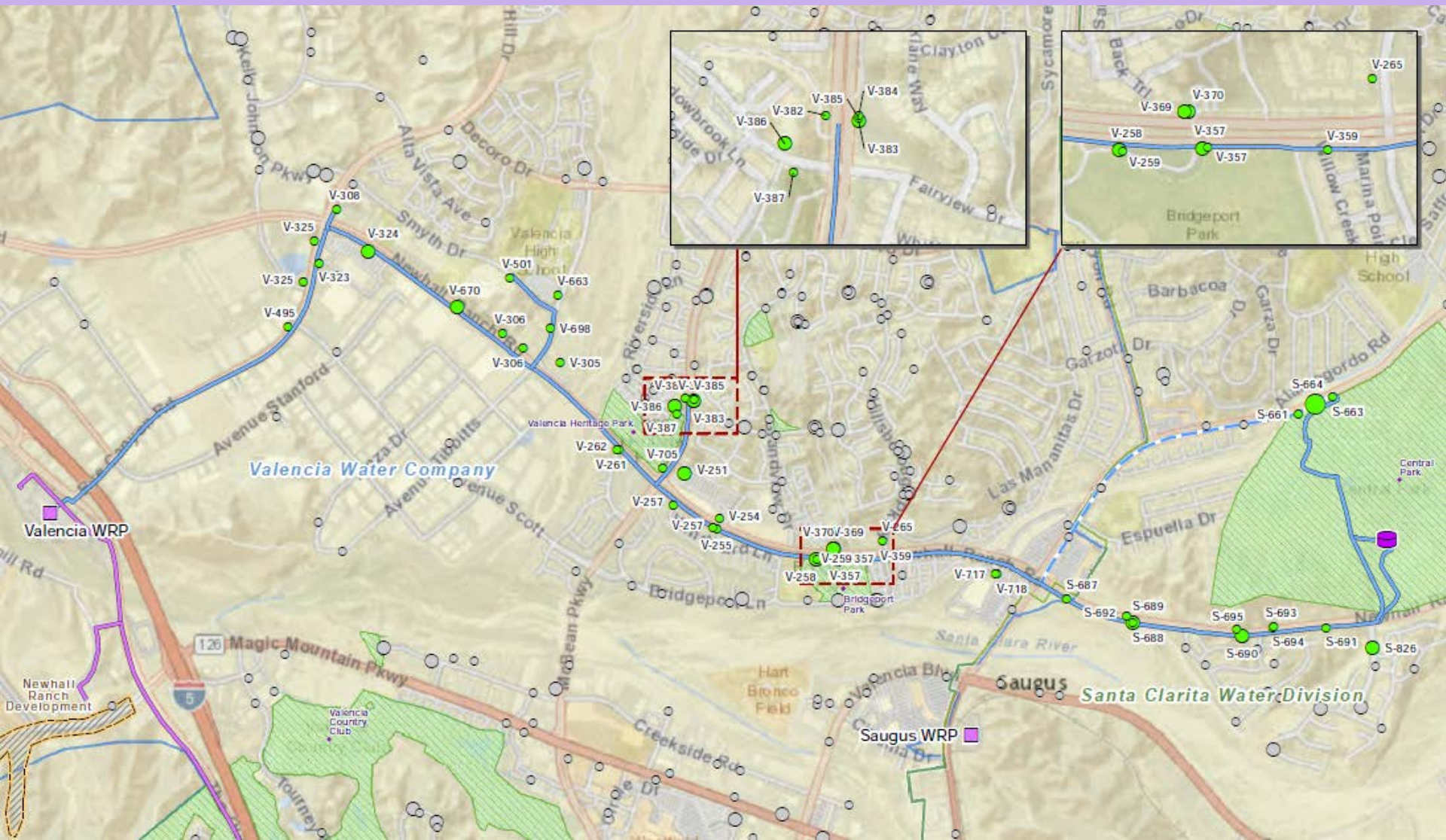
CLWA 2016 RECYCLED WATER MASTER PLAN UPDATE

Recycled Water Phase 2



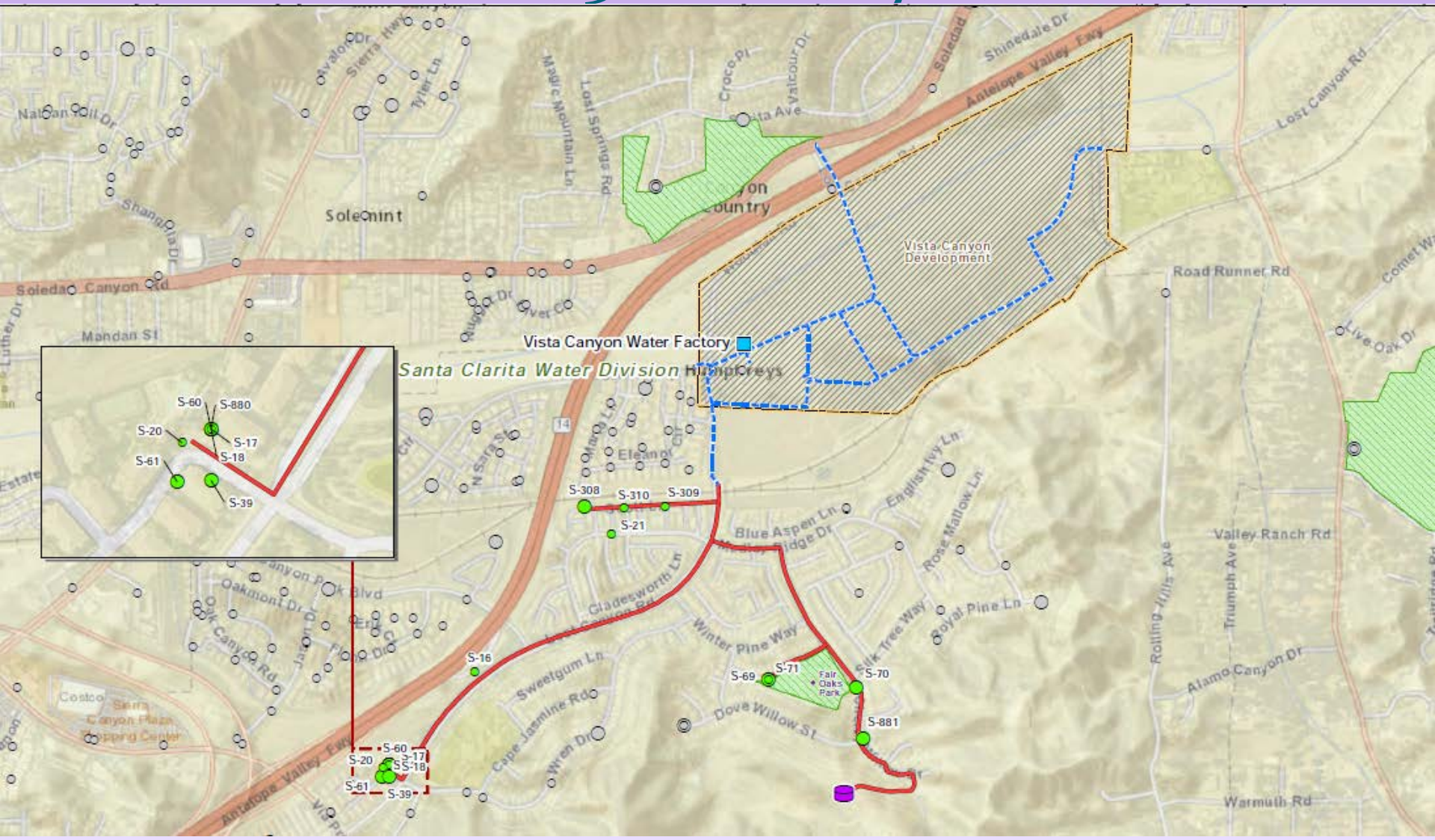
Phase 2A – Central Park

33,000 – 40,000 LF, 480-560 AFY, \$22-28M, 2023



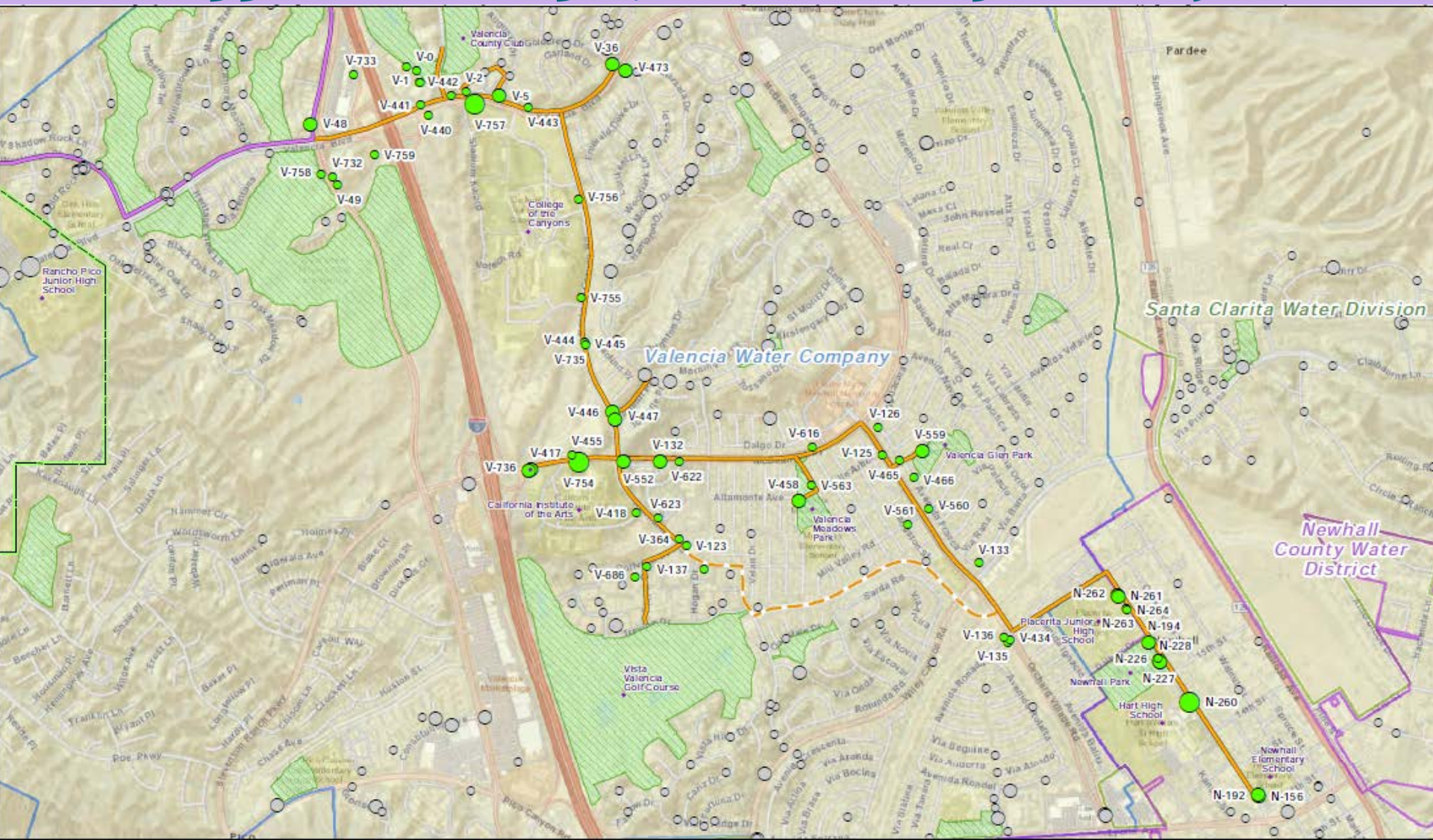
Phase 2B – Vista Canyon

11,000 LF, 300 AFY, \$7M, 2018



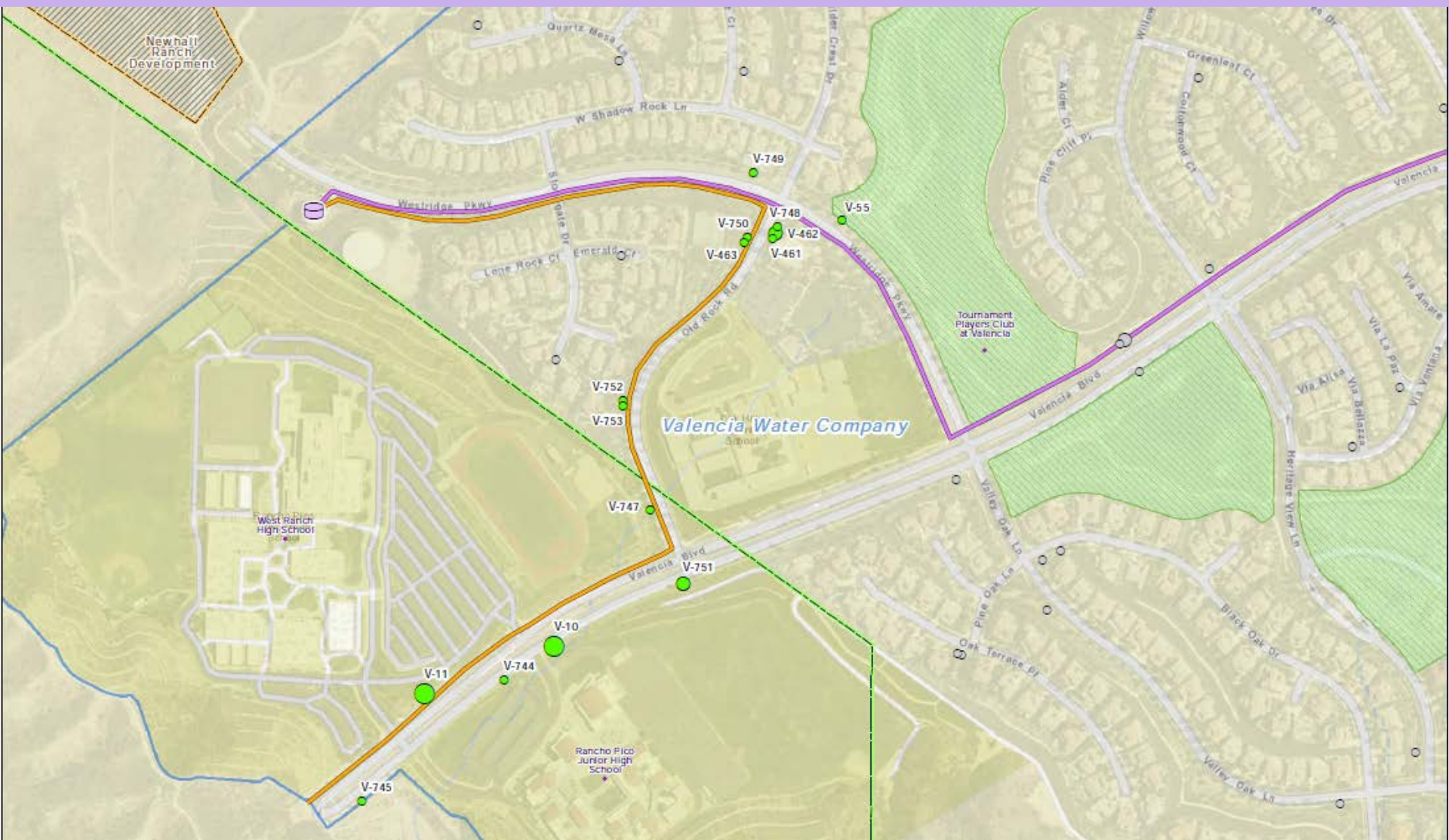
Phase 2C – South End

33,000 LF, 1,374 AFY, \$22-25M, 2019



Phase 2D – West Ranch

5,000 LF, 186 AFY, \$4M, 2018





Phase 2 Projects Summary

<u>Project</u>	<u>PDR</u>	<u>CEQA</u>
2A – Central Park	Complete	In Progress – Mar 2017
2B – Vista Canyon	Complete	In Progress – Apr 2017
2C – South End	Complete	In Progress – Feb 2017
2D – West Ranch	Complete	In Progress – Feb 2017

Next Steps

- Finalize and Adopt 2016 RWMP
- Finalize and Adopt 2016 RW PEIR
- Finalize and Adopt CEQA for Phases 2A-2D
- Initiate Final Design for Phases 2A-2D
- Complete and file SWRCB Grant Applications for Phases 2A-2D
- Execute cost sharing agreements between CLWA and Purveyors.



Thank you!

Questions?