



On The Water Hunt...

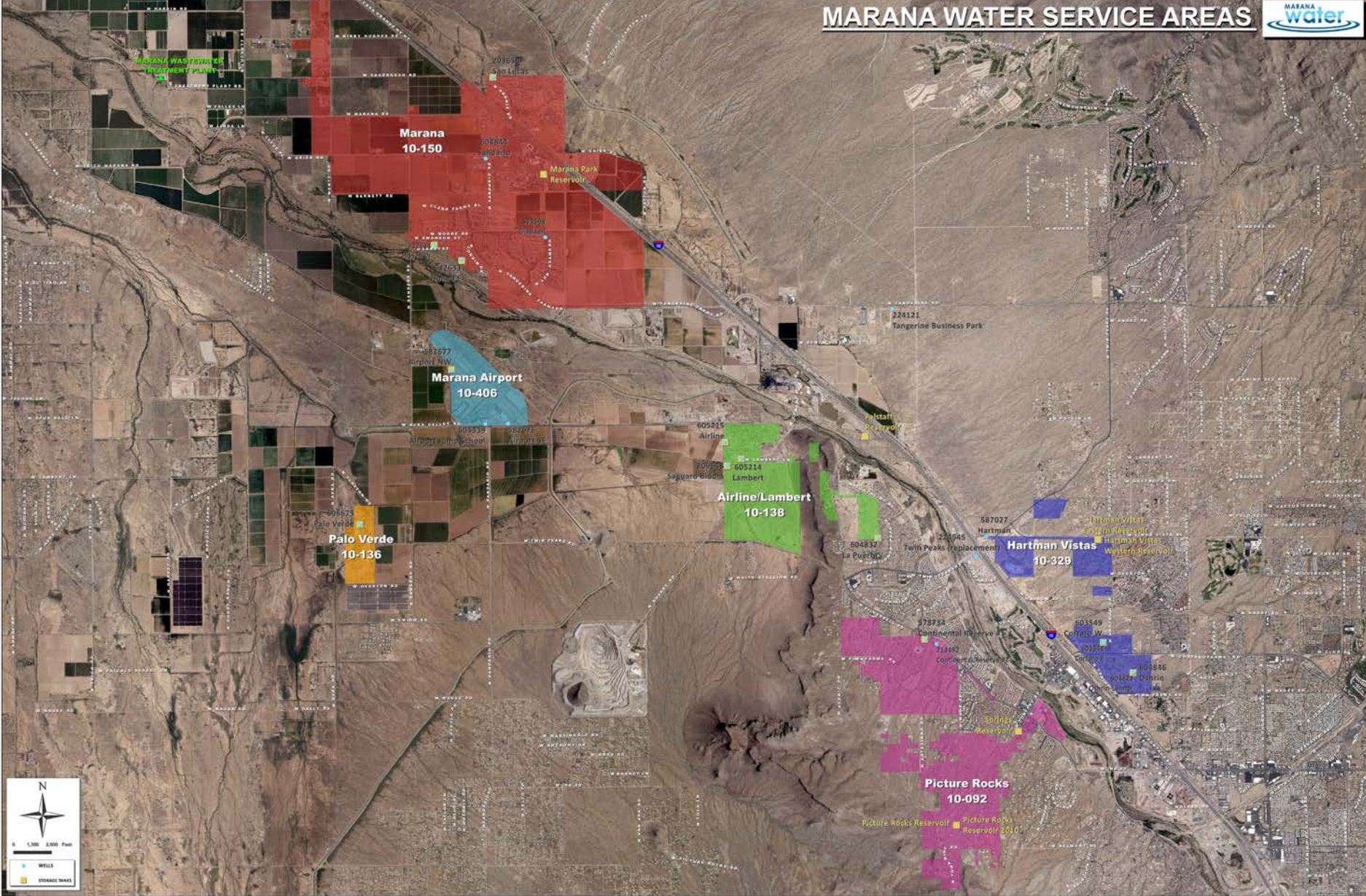
John Kmiec, Director

July 25, 2016

- Founded in 1977
- Population of 1,500
- Today population of 42,000
- One of Arizona's fastest growing regions

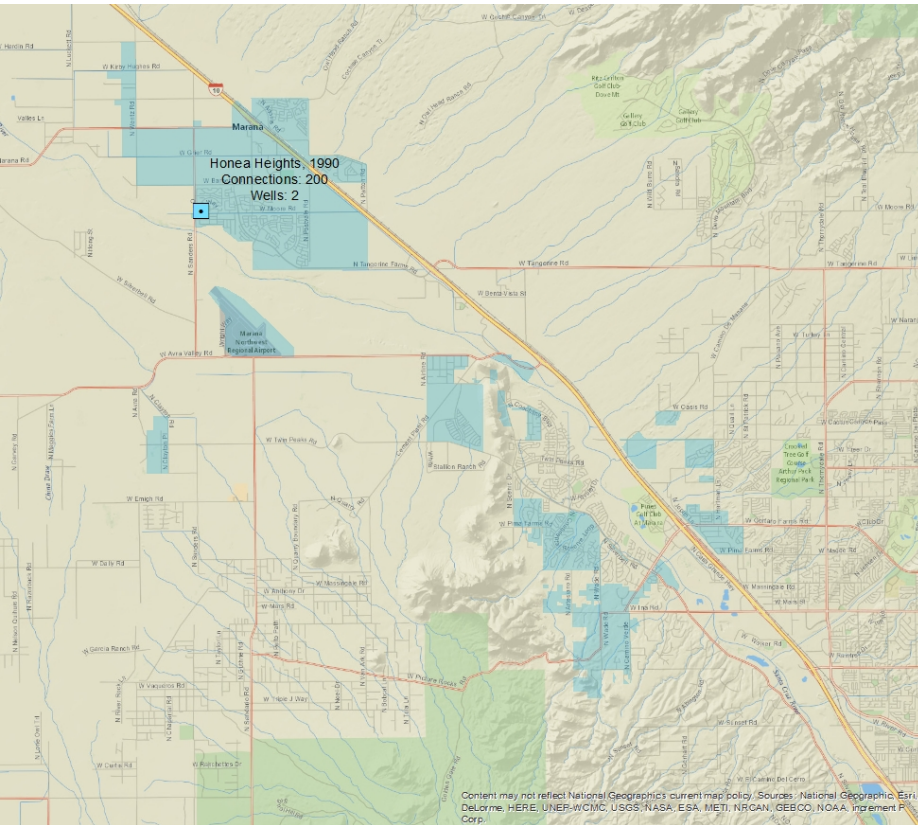


MARANA WATER SERVICE AREAS

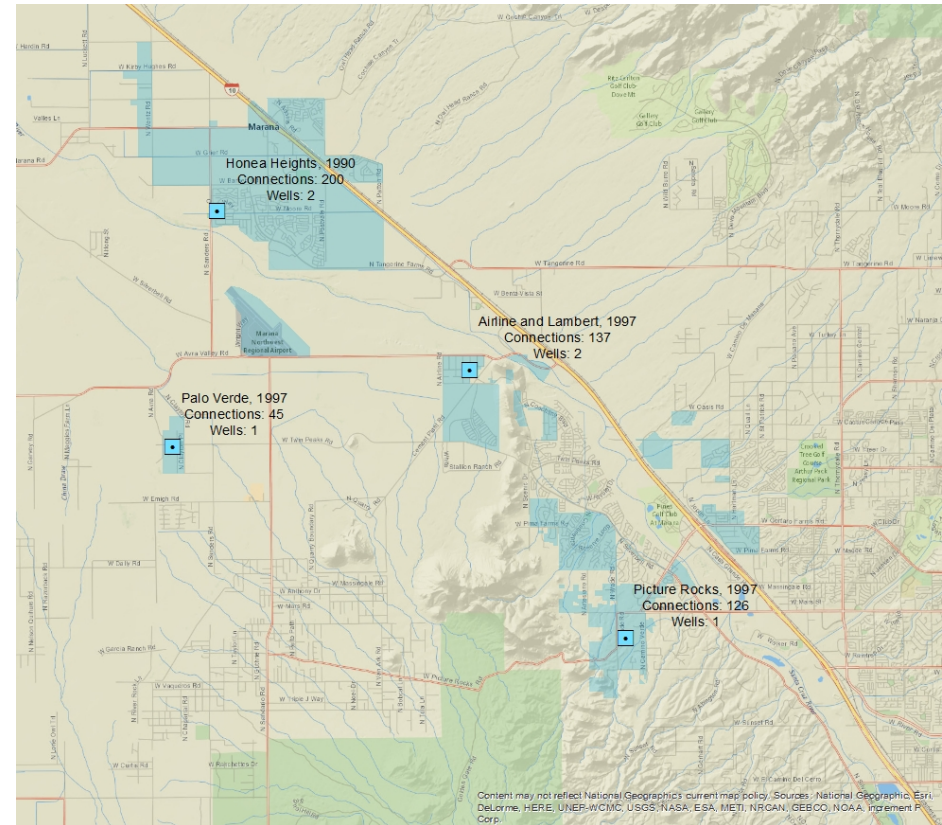


Marana's Municipal Water History

1990 – Public Works Serves 200



1997 – Marana Water Founded



CAP Allocation

Initial

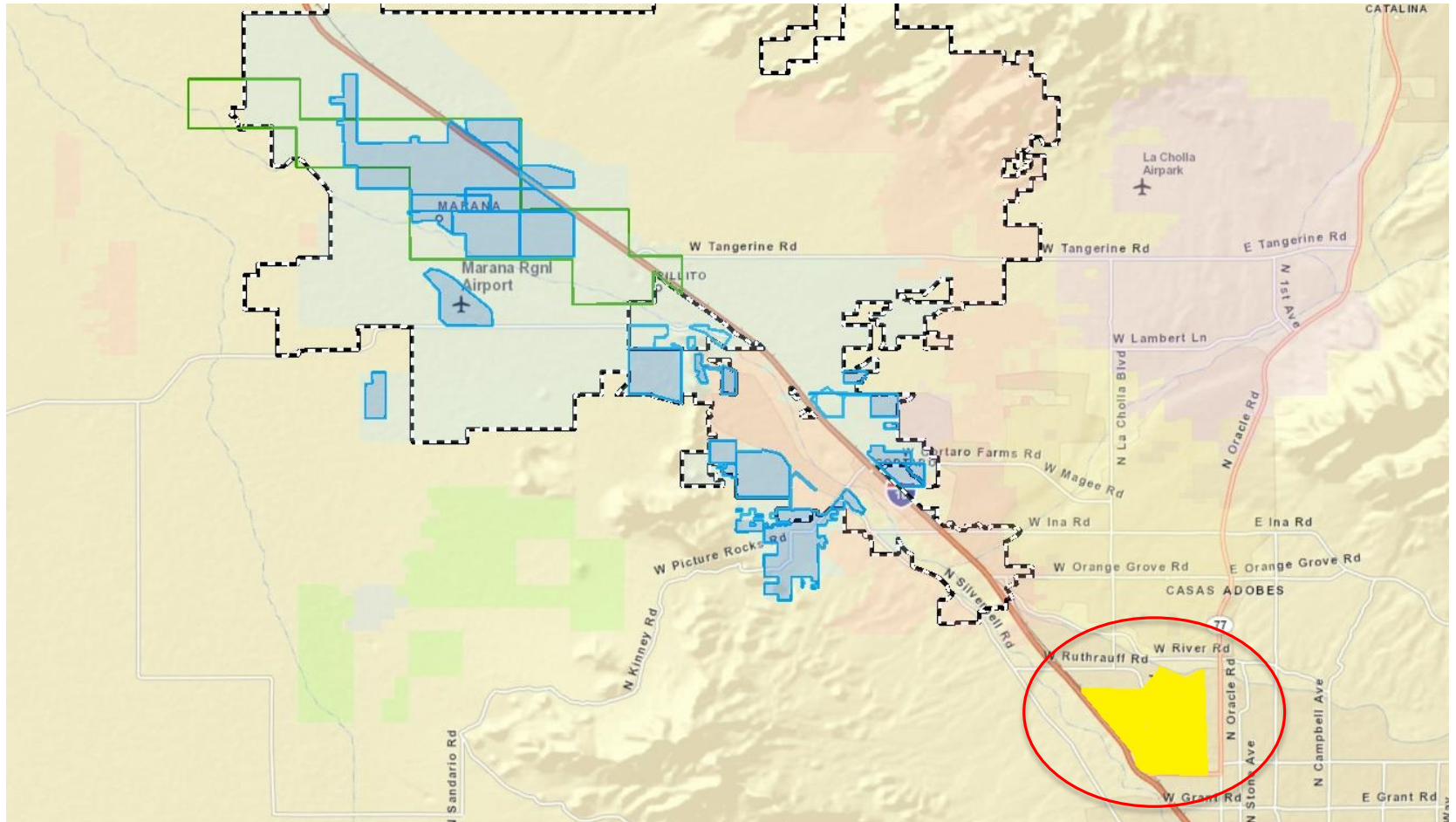
- 47 acre-feet in 1999
- Resulting from trust agreement

Other

- Flowing Wells transfer
- 1481 acre-feet



Flowing Wells Transfer

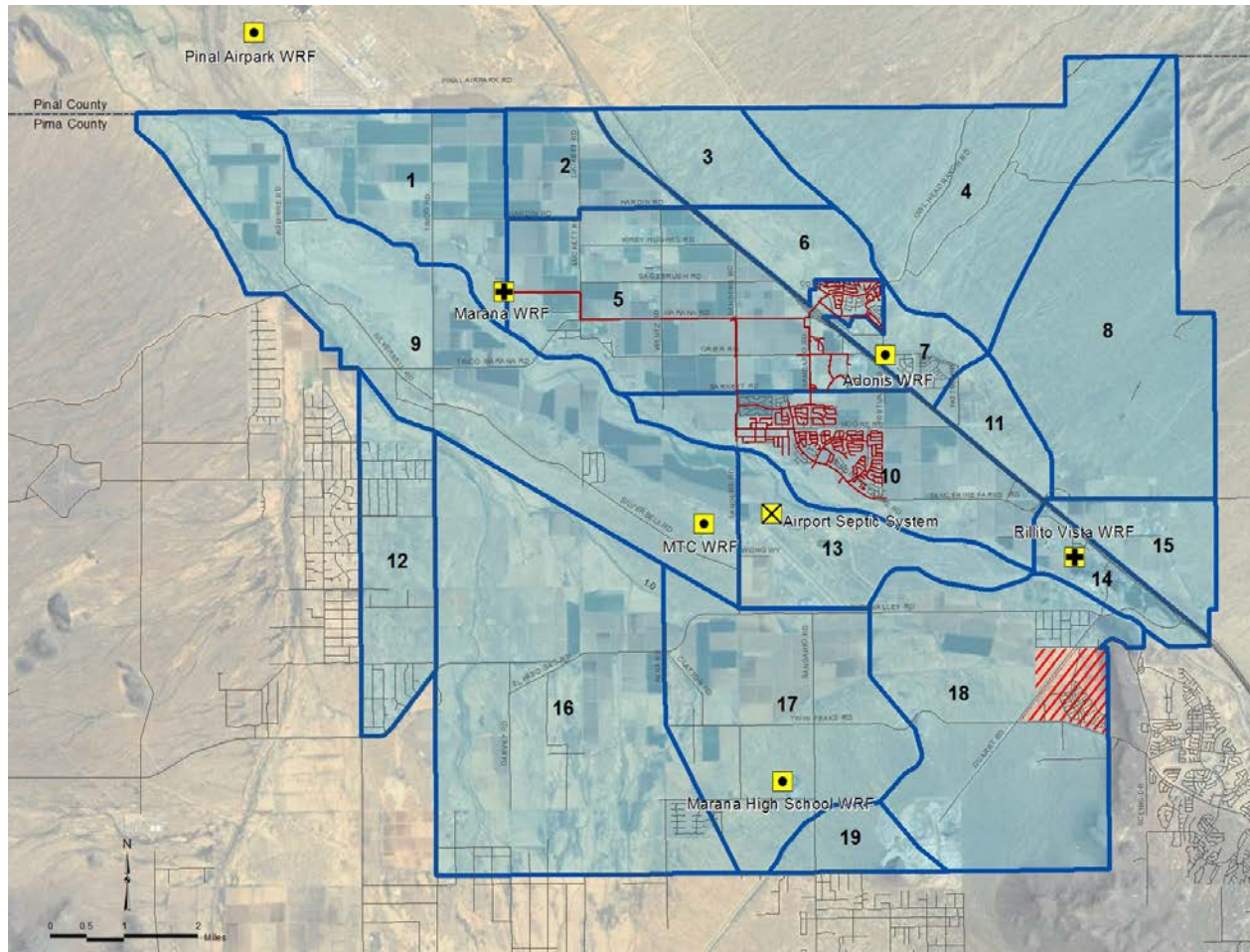


Importance of Effluent

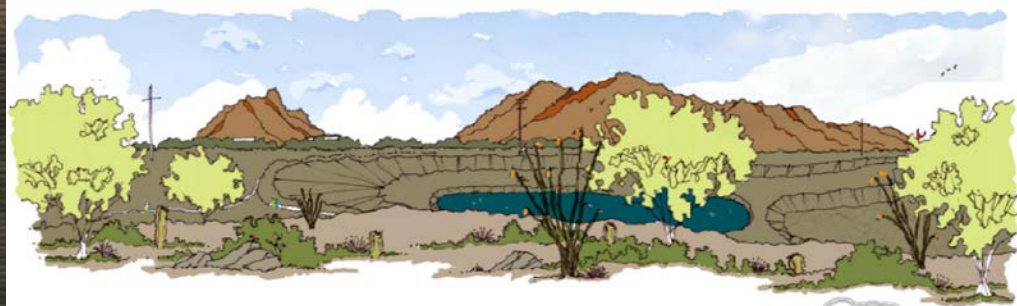
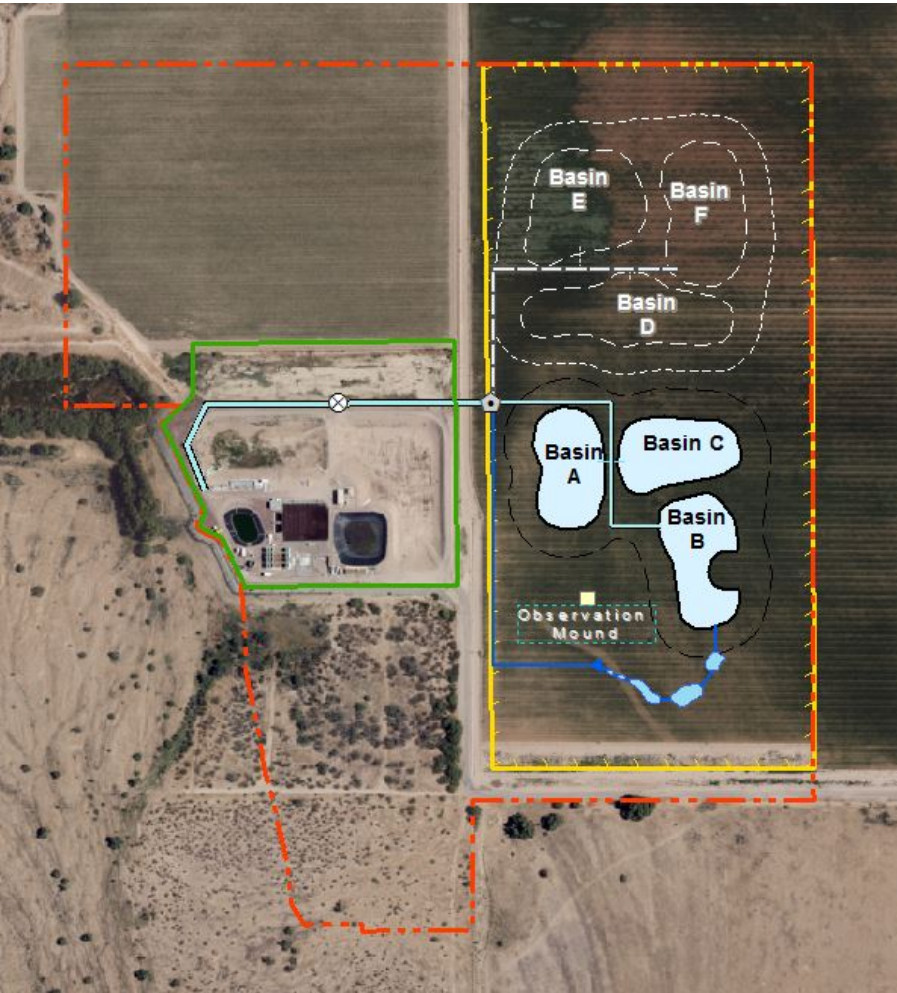
- Assured Water Supply
- Pima County dispute/settlement



Water Reclamation Service Area



Future Effluent Recharge



Consultant rendering
12/05/2014



Lower Santa Cruz River Managed USF

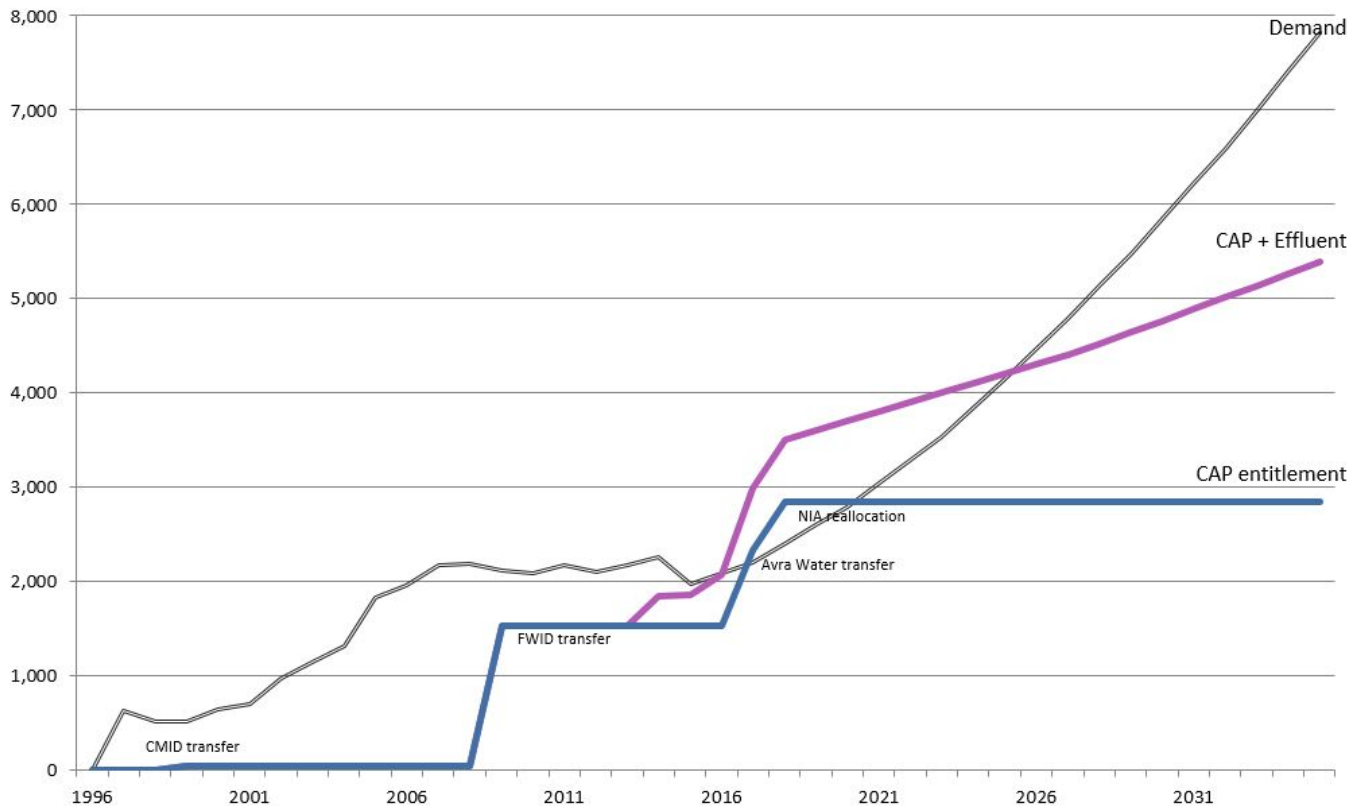


- 17+ miles of Managed Recharge
- Annual delivery of ~30,000 acre-feet

Growth Area Assumptions

Marana Water Demands and Renewable Supply Entitlements in Acre-Feet

Actual demands through 2015, post-2015 demand and effluent entitlement projections as of June, 2016



Other CAP

M&I or NIA



- Annual Long Term Storage transfers
- Other available excess allocations
- Effluent???

Summary

Marana Water will continue to:

- *Look for CAP allocation opportunities*
- *Advancement in water reclamation usage*



