

SJWC Recycled Water and Water Conservation Program Activities

Benjamin Pink
Water Resources Specialist



San Jose Water Company

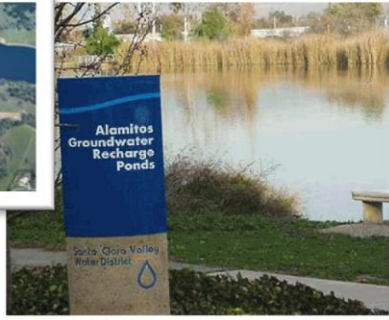
- Over 225,000 service connections
- Service area of 139 square miles that includes the following cities:
 - 80% of San Jose and ~90% of Cupertino
 - Campbell, Los Gatos, Saratoga, and Monte Sereno
 - Unincorporated County pockets
- Wholesaler is Santa Clara Valley Water District

San Jose Water Company

Infrastructure:

- 2,400 miles of main
- 105 wells
- 96 distribution reservoirs
- 2 surface water treatment plants
 - Montevina (Los Gatos Creek Watershed)
 - Saratoga (Saratoga Creek Watershed)

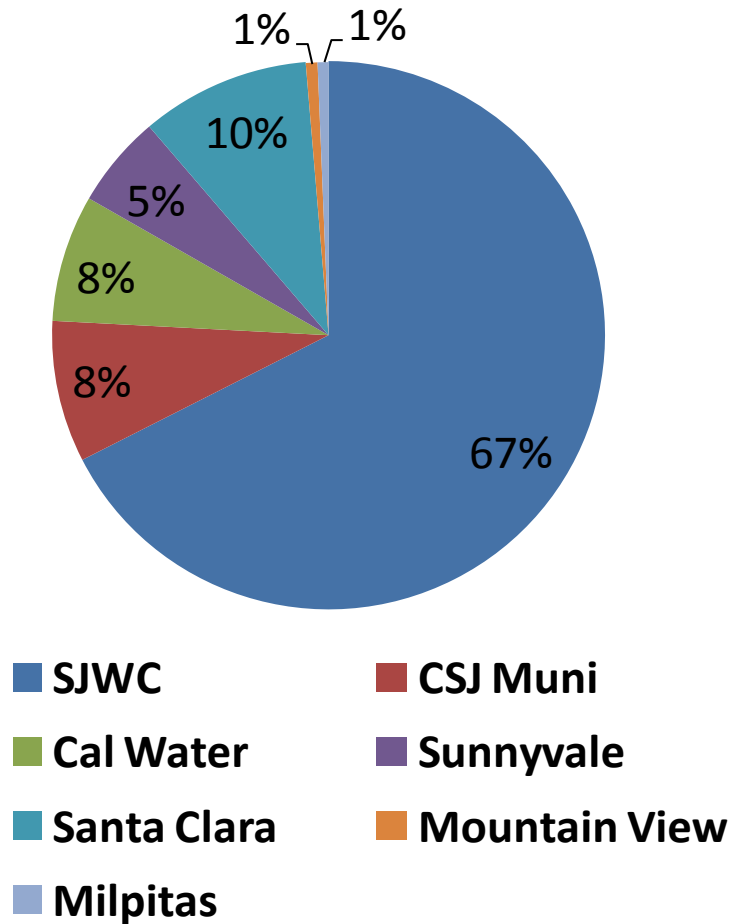
Santa Clara County- 3 primary sources of supply



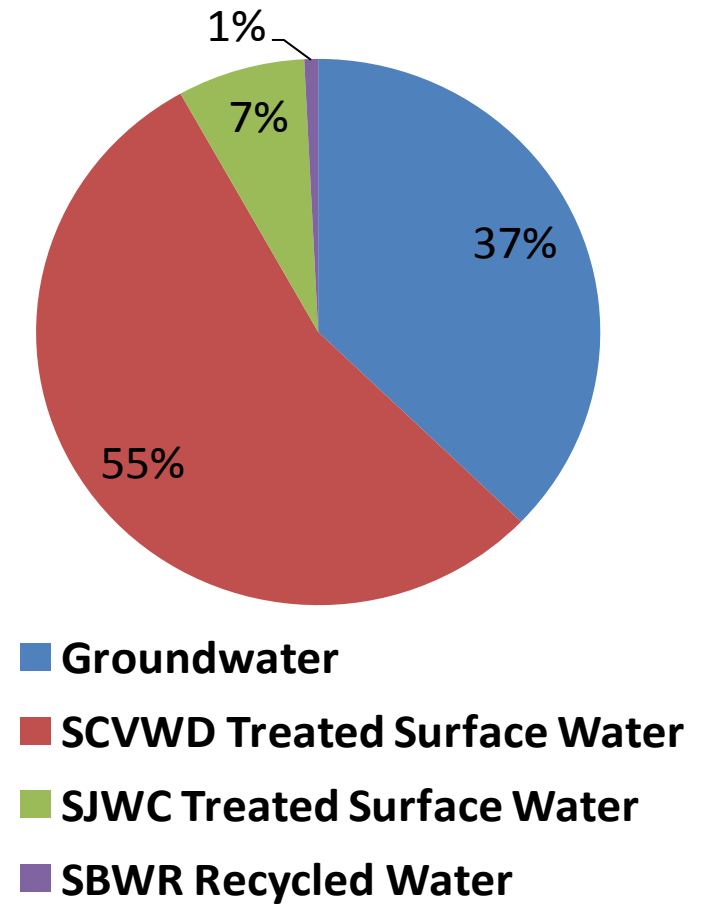
1. Local
Surface and
groundwater
2. Imported
Sierra snowpack thru
Bay-Delta
3. Recycled
Highly treated
wastewater

Water Supply in Santa Clara County

SCVWD Potable Demands by Retailer



SJWC Sources of Supply



San Jose Water Company

Per Capita Consumption

2013 Ave	139	gpcd*
June 2015	107	gpcd

-Indoor	50	percent
-Outdoor	50	percent

Indoor Uses

-Toilets	27	percent
-Washer	22	percent
-Shower	16	percent
-Faucet	16	percent
-Leaks	14	percent
-Other	2	percent
-Bath	2	percent
-Dishwasher	1	percent

California Urban Water
Conservation Council

* Gallons per capita per day

2015 Drought Resources



SAN JOSE WATER COMPANY



REPORT WATER WASTE



CONTACT US



MY ACCOUNT



FOR YOUR HOME



FOR YOUR BUSINESS



FOR YOUR INFORMATION



ABOUT SAN JOSE WATER



California Drought

Please reduce water use by 30%



LATEST NEWS

Comprehensive Drought Information

May
08

With California facing one of the most severe droughts in history,...

[Read On »](#)

Notice of State Water Resources Control Board Emergency Regulation

Apr
17

Under order of the California Public Utilities Commission, San Jos...

[Read On »](#)

New Drought Restrictions

Apr
07

The Governor is calling on all Californians to conserve 25% of 2...

[Read On »](#)

1 2 3 > Last >

BILLING/PAYMENT
OPTIONS



START, STOP OR
TRANSFER SERVICE



ACCOUNT BALANCE



CAREERS



[HOME](#) | [PRIVACY POLICY](#) | [WEBSITE TERMS OF USE](#) | [PAPERLESS BILLING TERMS & CONDITIONS](#) | [SITE MAP](#) | [CONTACT US](#) |

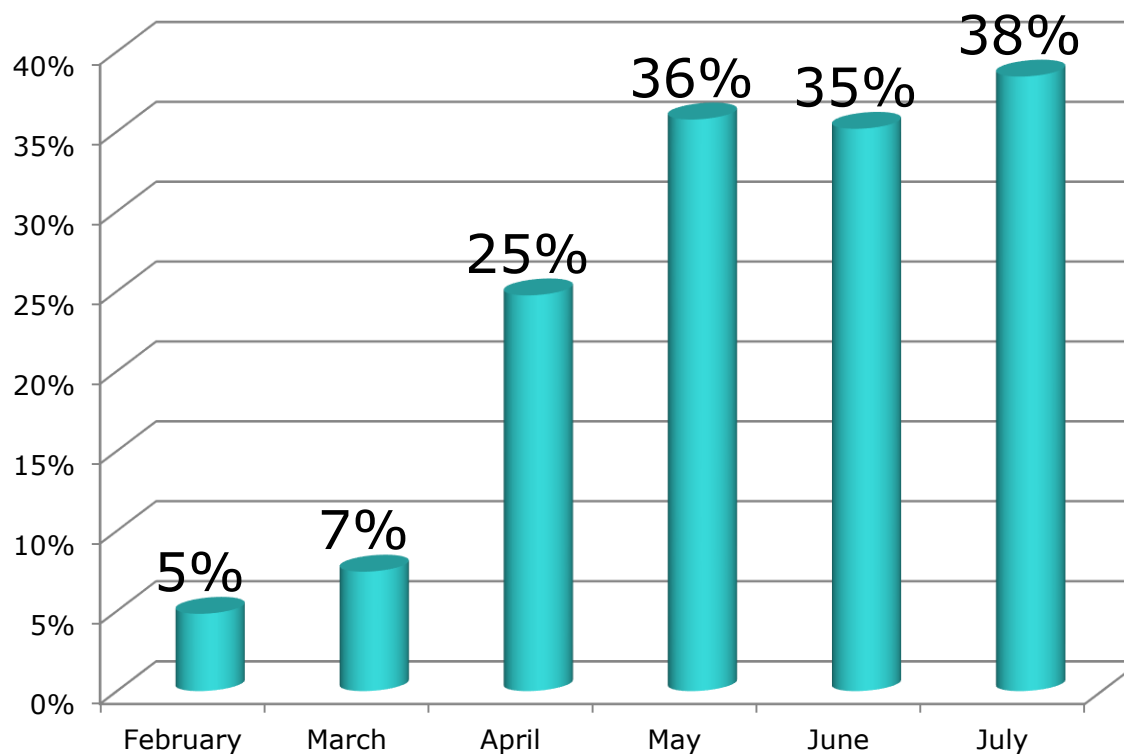


Water Allocation Program

- Required by the CPUC
- Establishes monthly allocation using system wide residential average and 30% conservation target
- Base rate applies to all units consumed
- Surcharge(s) applies to all units consumed in excess of allocation
 - Drought Surcharge 1 @ 3.56/unit up to 2013 average
 - Drought Surcharge 2 @ 7.13/unit greater than 2013 average

How are SJWC customers doing in terms of conservation?

Monthly Savings Compared to 2013



SJWC Water Conservation Programs

- Free Residential and CII water audit program
- Free high efficiency showerheads and aerators
- High efficiency washer and toilet rebate program
- Landscape rebate program
 - Irrigation hardware
 - Landscape (turf) conversion
- School Education Program for 5th grade students
- Public drought tolerant demonstration garden
- Landscape education website

What's On Tap?

- Home Water Use Reports
- Large Landscape Water Budgets
- Advanced Metering Infrastructure pilot test

Current water use restrictions:

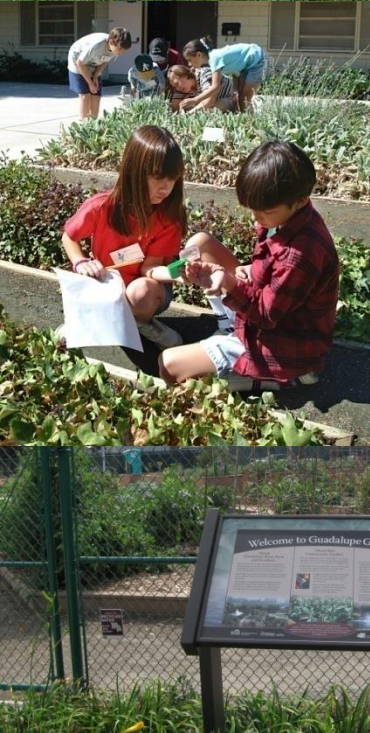
New rules effective June 15, 2015 include (partial list):

- Customers must fix leaks, broken irrigation systems, or broken plumbing fixtures within 72 hours if notified to do so by San Jose Water Company.
- Watering days: Do not water outdoors more often than two (2) days per week. Even numbered addresses water on Tuesday and Friday and odd numbered addresses as well as properties with no address water on Monday and Thursday.
- No watering between 10:00 AM and 8:00 PM and irrigation cannot exceed fifteen (15) minutes per zone per day...
- No irrigation can occur regardless of method that results in runoff.
- No use of drinking water for washing driveways, sidewalks, and other hard surfaced, non-porous areas.
- No washing of cars, buses, boats, aircraft, trailers or other vehicles, except at a commercial car washing facility that utilizes a re-circulating water system to capture and reuse water.
- **No use of potable water for construction purposes, including washing streets, backfill, and dust control unless no other source of water or other method can be used.**

Current water use restrictions...

- Recycled water exempt from restrictions on number of days per week and minutes per zone irrigation. Still need to adhere to no runoff rules.
- No potable water to be used for construction purposes within city of San Jose. SJWC offers a recycled water portable meter program to connect to access points on SBWR system.
- SJWC allocation program does apply to customers with dedicated irrigation meters (potable water).

Recycled Water



Recycled Water

San Jose Water Company has been expanding the existing South Bay Water Recycling pipeline network. SJWC now owns, operates and maintains recycled water infrastructure as well as SBWR.

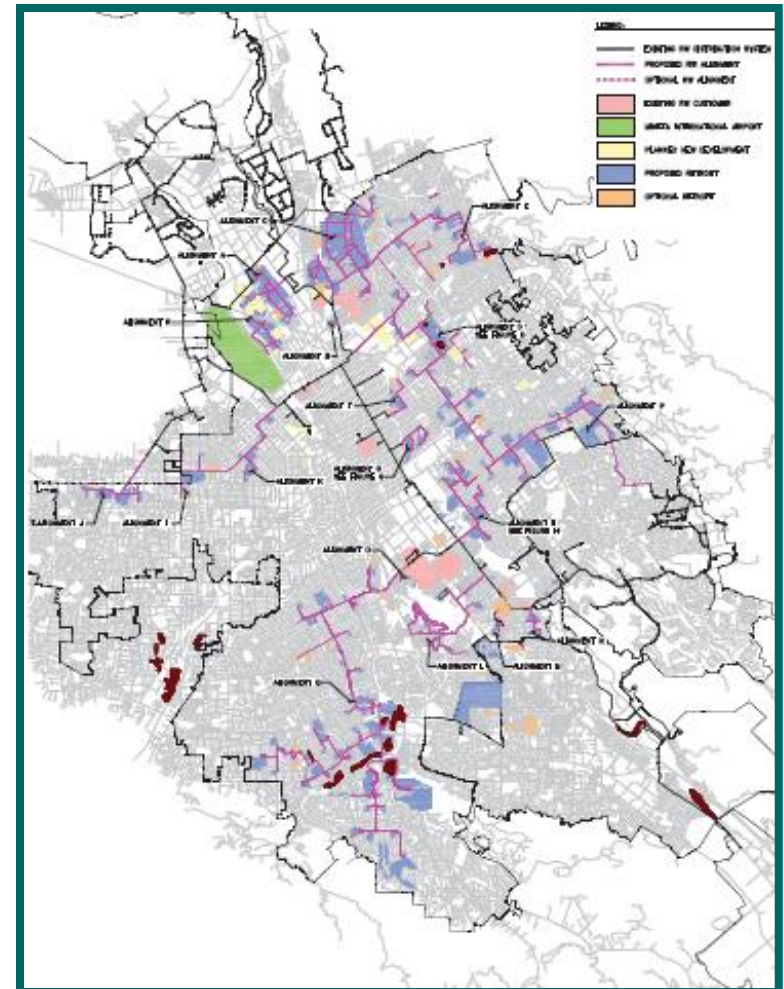
Work to date:

- Five pipeline alignments: G, H, C, M, N.
- Thus far 87 customer sites designed and connected to these alignments.
- Primarily irrigation sites, but also some industrial and cooling tower sites.

Prior general rate case (GRC) with CPUC included funding for customer retrofits as well as the pipeline construction. This is also pending for the 2016 GRC.

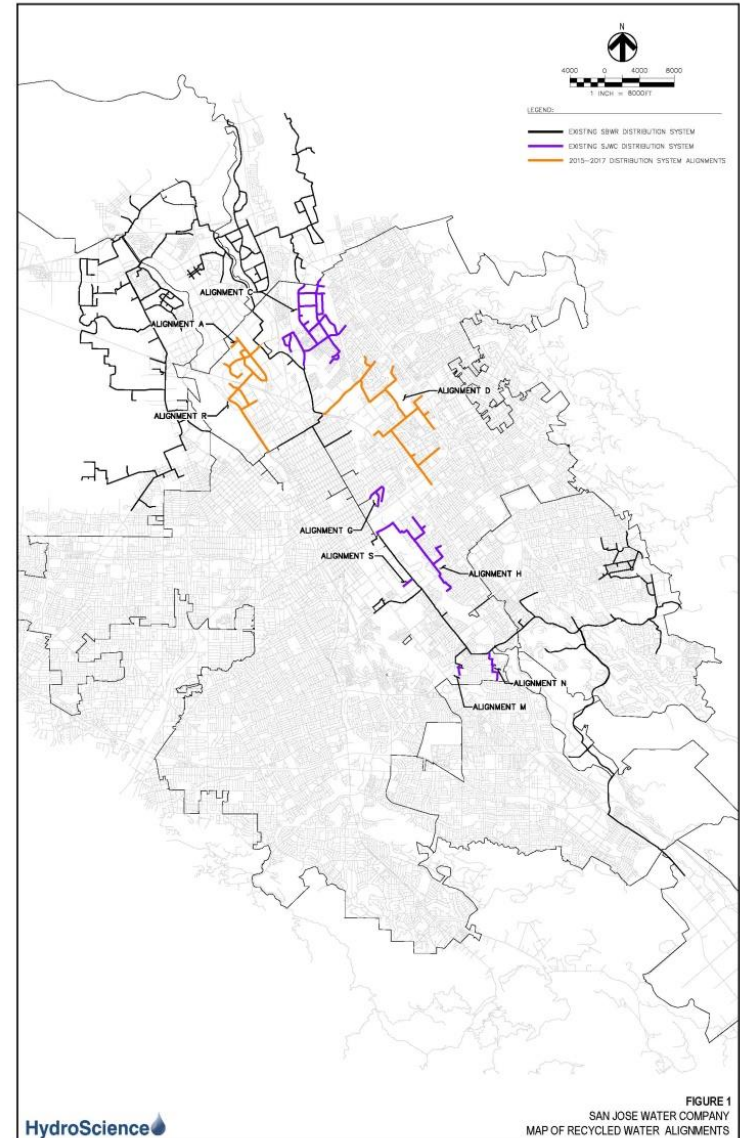
SJWC – Recycled Water Pipeline Alignments

Alignment	Customers	Demand
G	5	128
H	30	415
R	21	119
M	3	18
L	10	753
S	2	20
C	115	560
N	4	56
D	39	975
K	9	203
P	23	937
Q	66	2661
A	73	232
E	13	618
I	3	77
J	29	107
OVERALL TOTAL	445	7,879

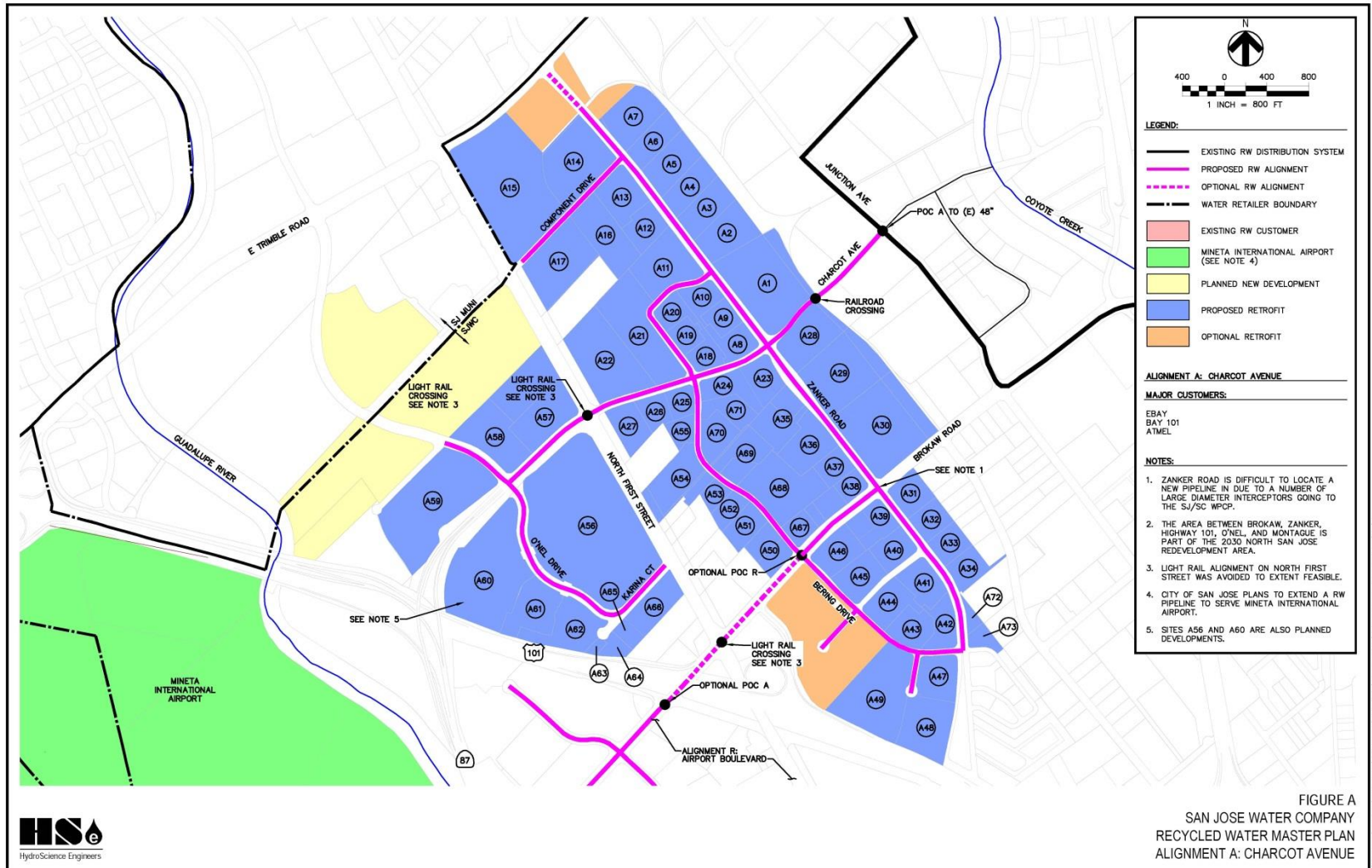


2015-2017 Proposed Recycled Water Pipeline Alignments

- 3 new pipeline alignments proposed for 2015-2017 (A, R, D)
- 112 customers
- 10.6 miles of additional distribution system pipelines
- Proposed expenditures, subject to CPUC approval :
\$~16.5M for pipeline construction
- \$~7M for retrofit design and construction
- Commercial/industrial/institutional customers



2015 Project: Alignment A



2015 Project: Alignment R

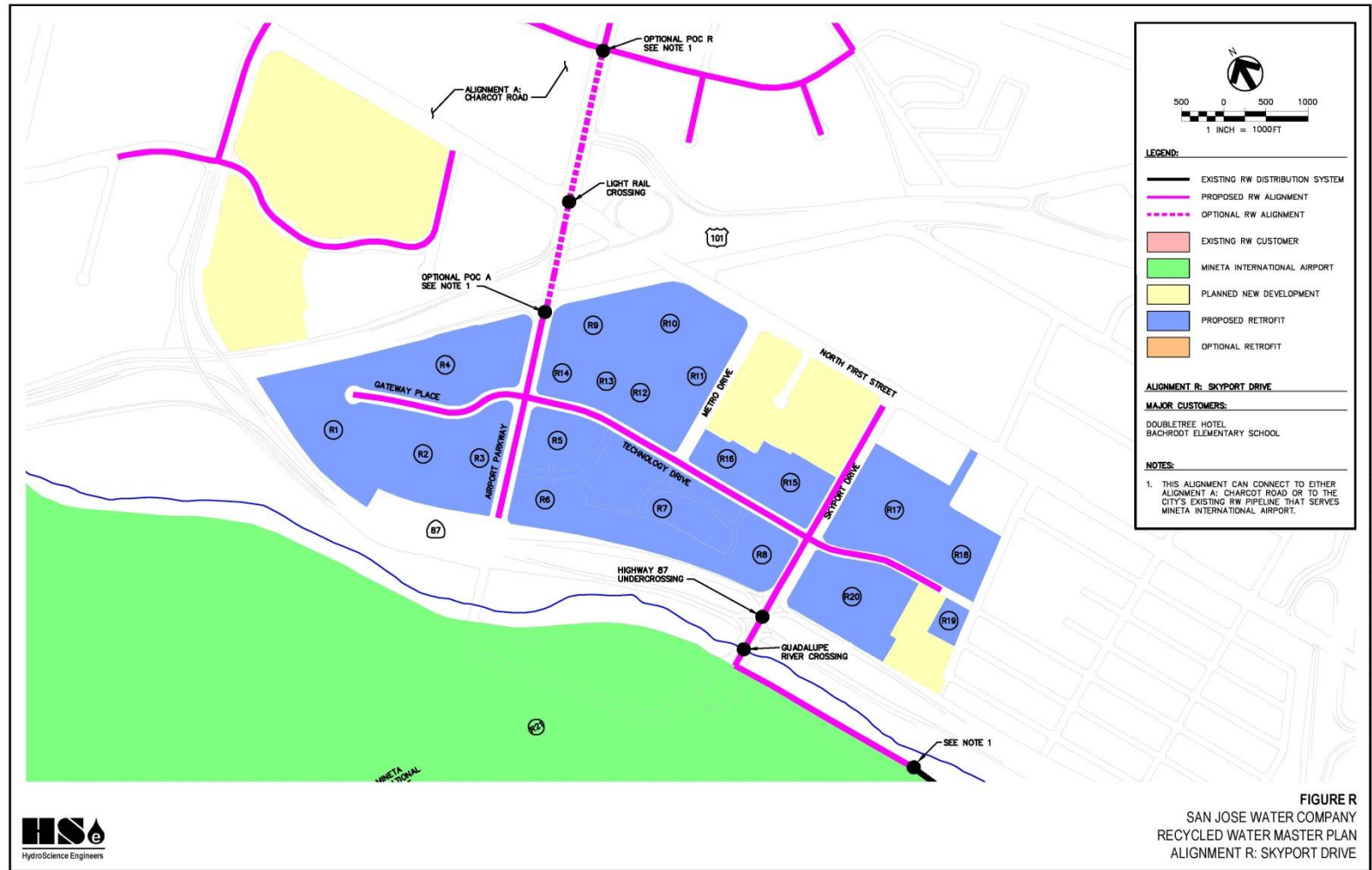
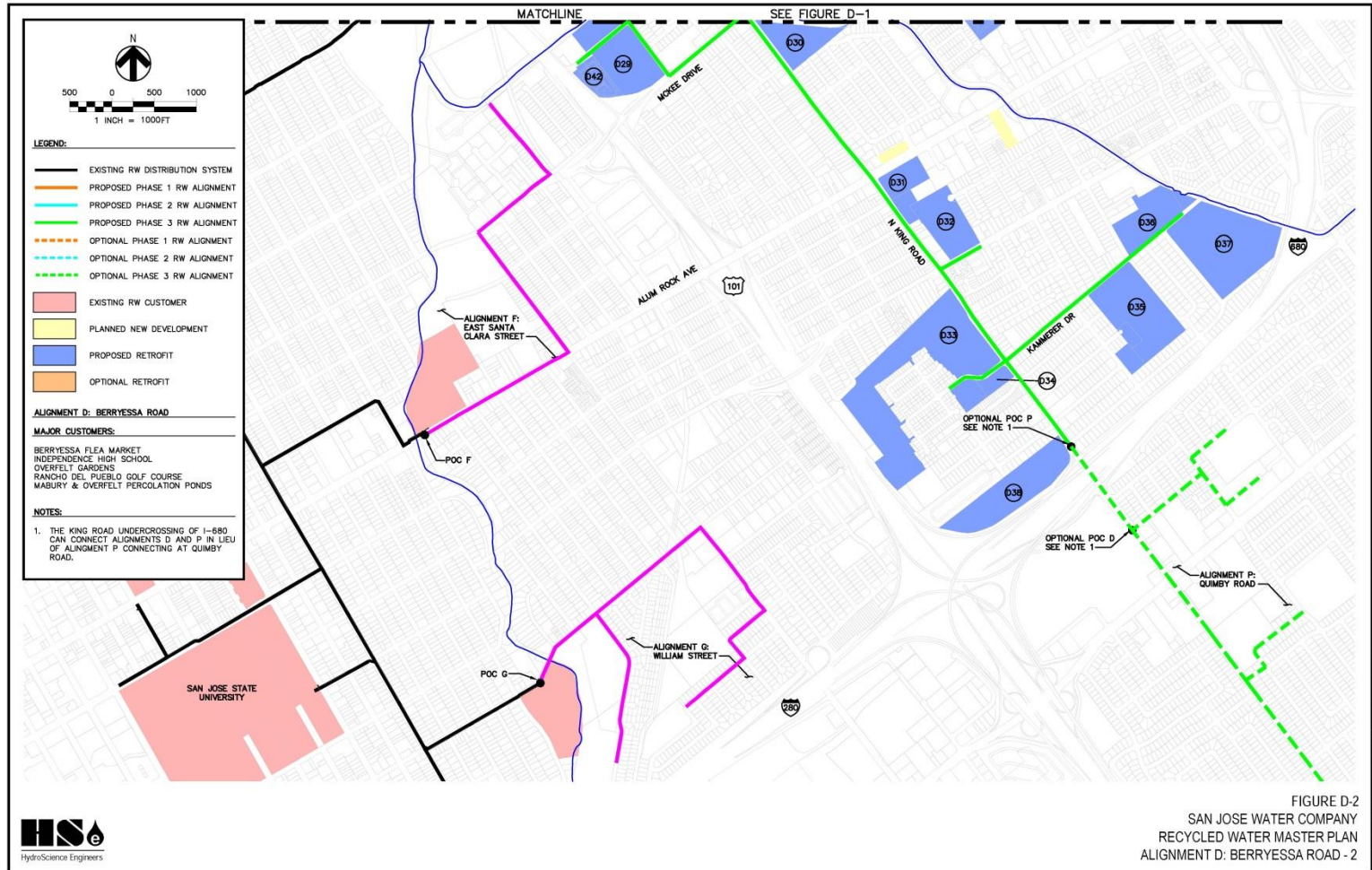


FIGURE R
SAN JOSE WATER COMPANY
RECYCLED WATER MASTER PLAN
ALIGNMENT R: SKYPORT DRIVE

2017 Project: Alignment D



Thank You

Benjamin Pink
San Jose Water Company
Ben.pink@sjwater.com
408-918-7251