

Master Planning for CCCSD's Recycled Water Program

Back to the Future and Beyond

**Melody LaBella & Nate Hodges
WaterReuse NoCal Chapter Meeting
December 4, 2015**



Central Contra Costa Sanitary District

Protecting Public Health and the Environment



Central Contra Costa Sanitary District (CCCCSD)



- 146 sq. mile service area
- Serves ~475,000 residents and 3,000+ businesses
- >1,500 mile sewer system
- Mostly domestic flow

2014 Stats

- Treated ~36 MGD wastewater (avg. daily)
- Produced ~530 million gallons of recycled water



CCCCSD's Original Treatment Plant



CCCSD's Treatment Plant Today



Water Reclamation Facilities

Forebays, Applied Water Pumps, Filter Plant



Water Reclamation Facilities

Filters

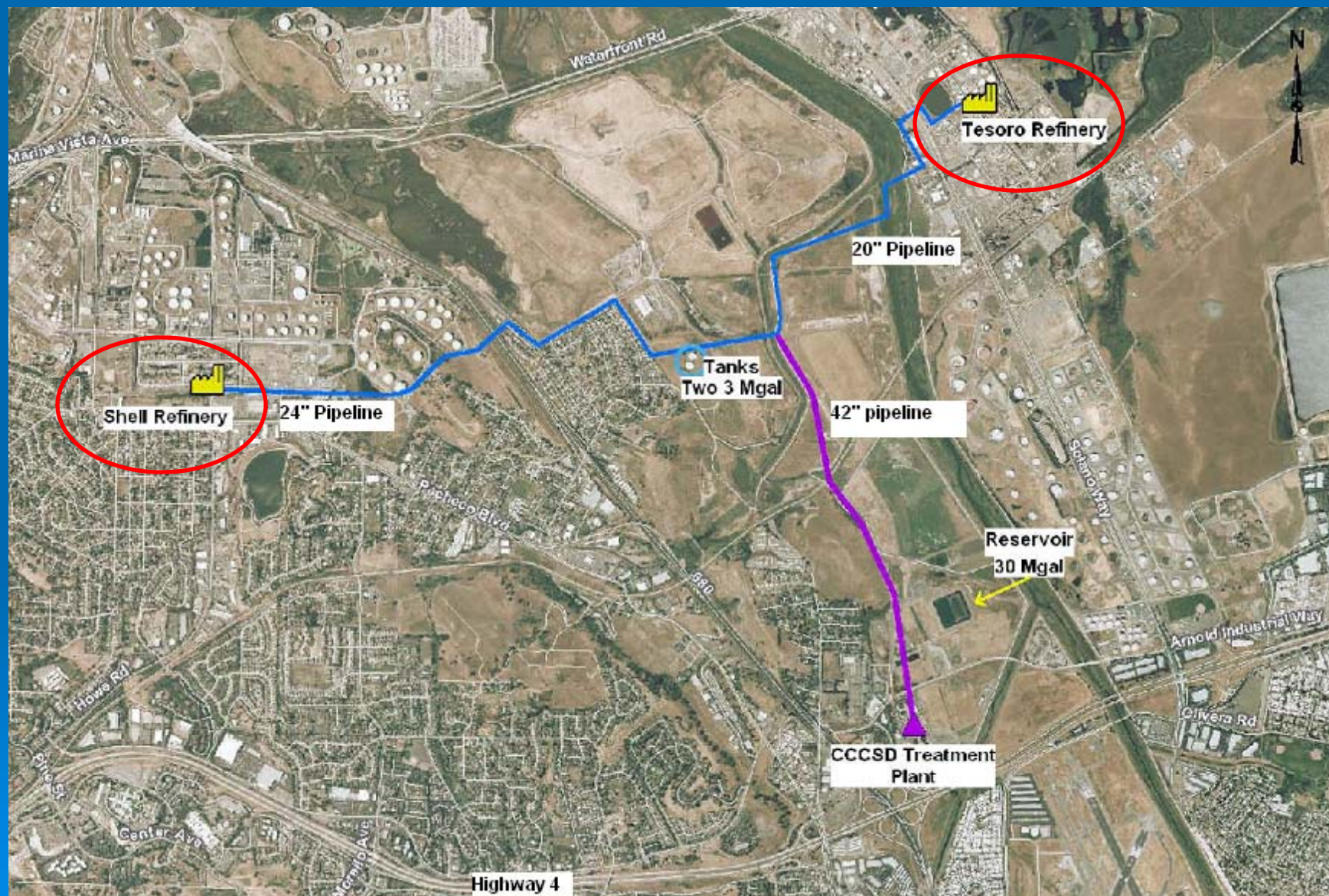


Water Reclamation Facilities

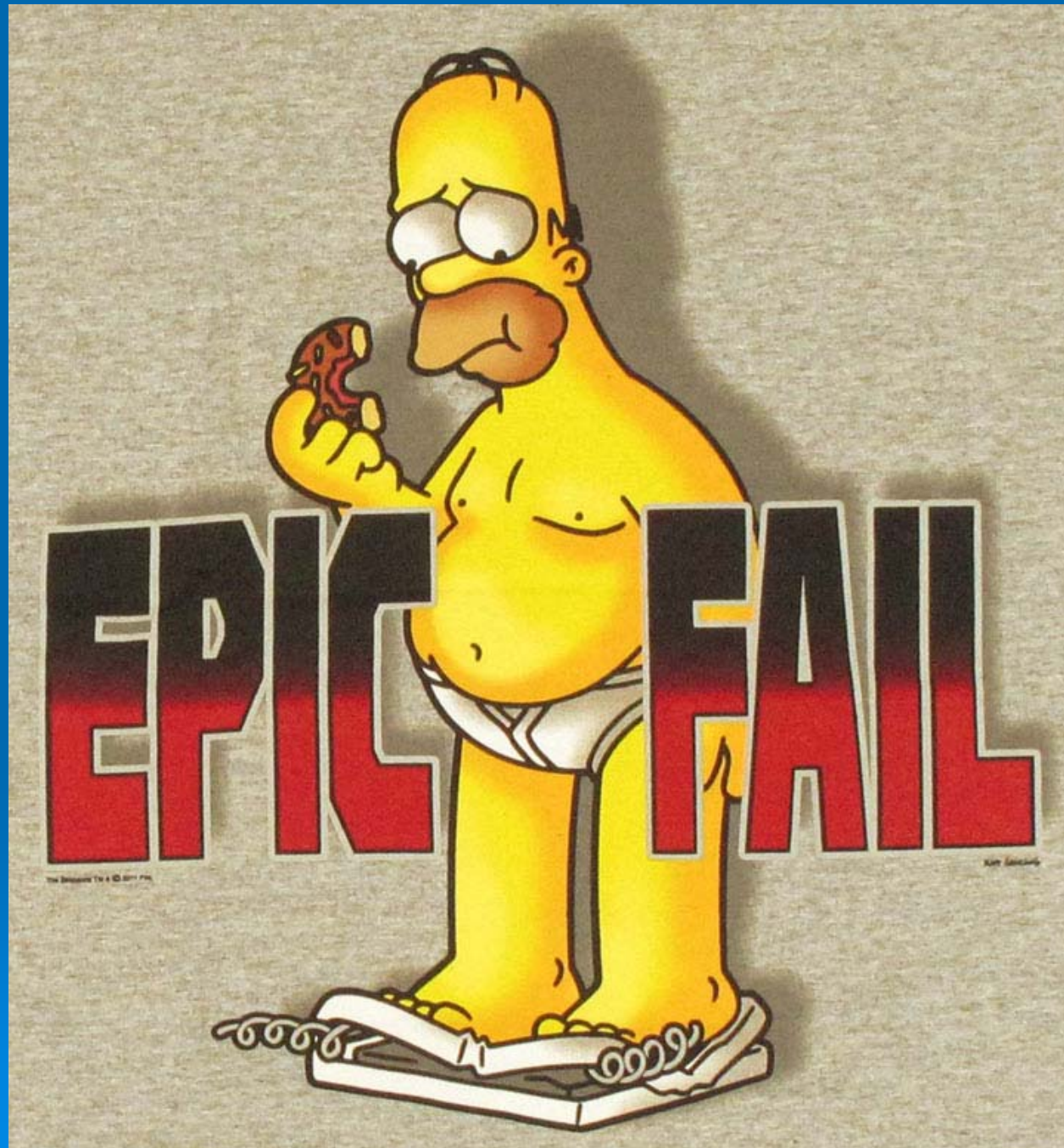
30 MG Storage Reservoir



Distribution Facilities Constructed



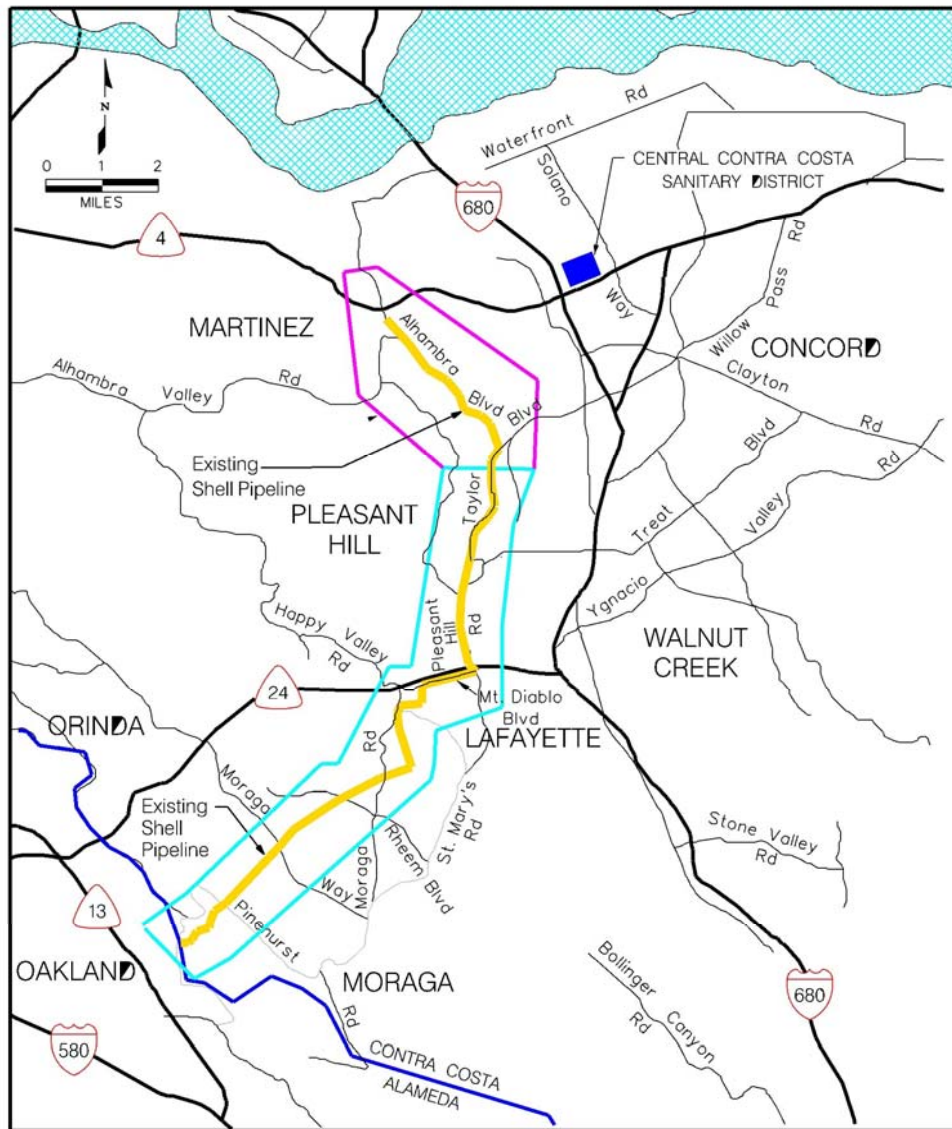




PLAN B

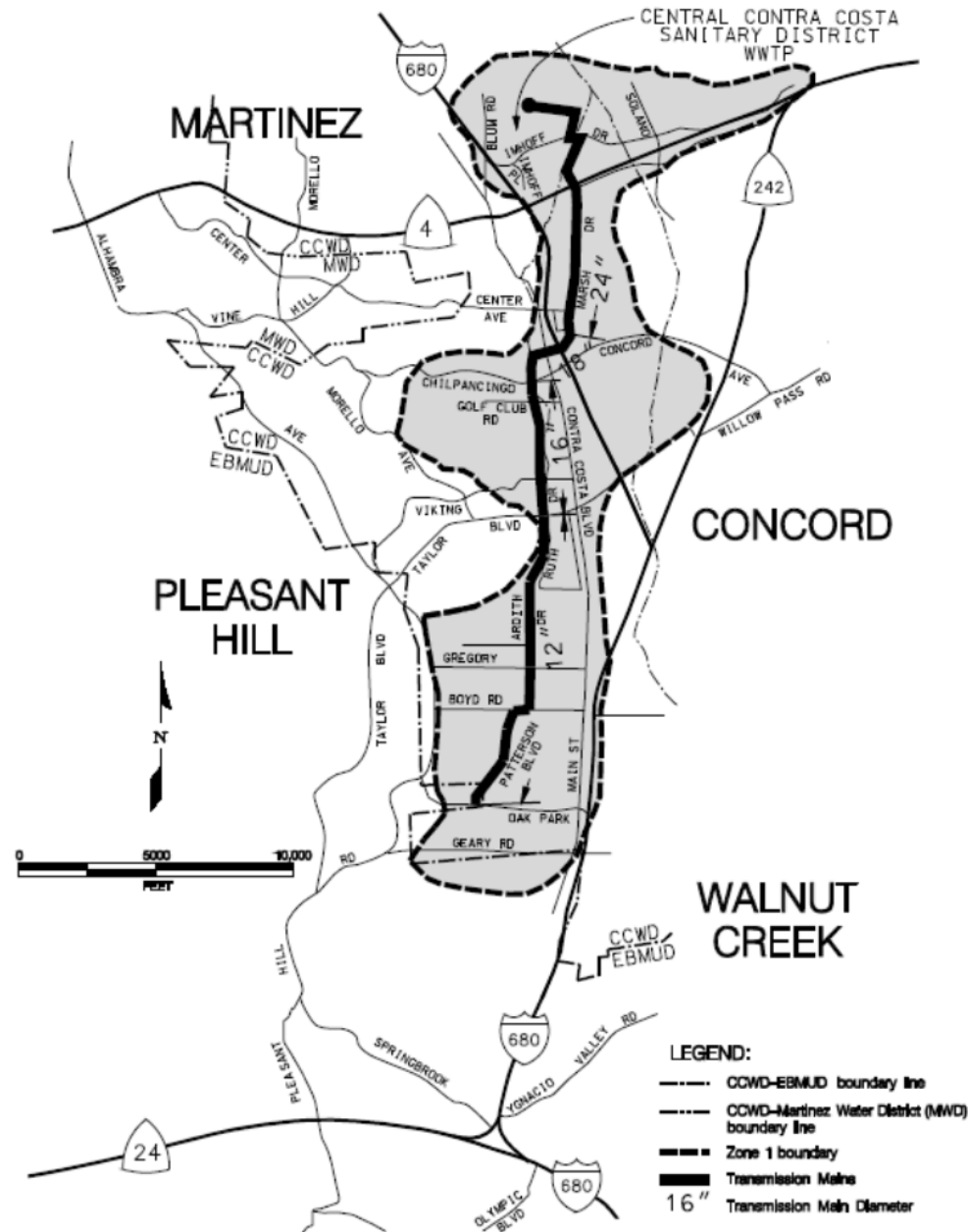
~~PLAN A~~

Lamorinda Project



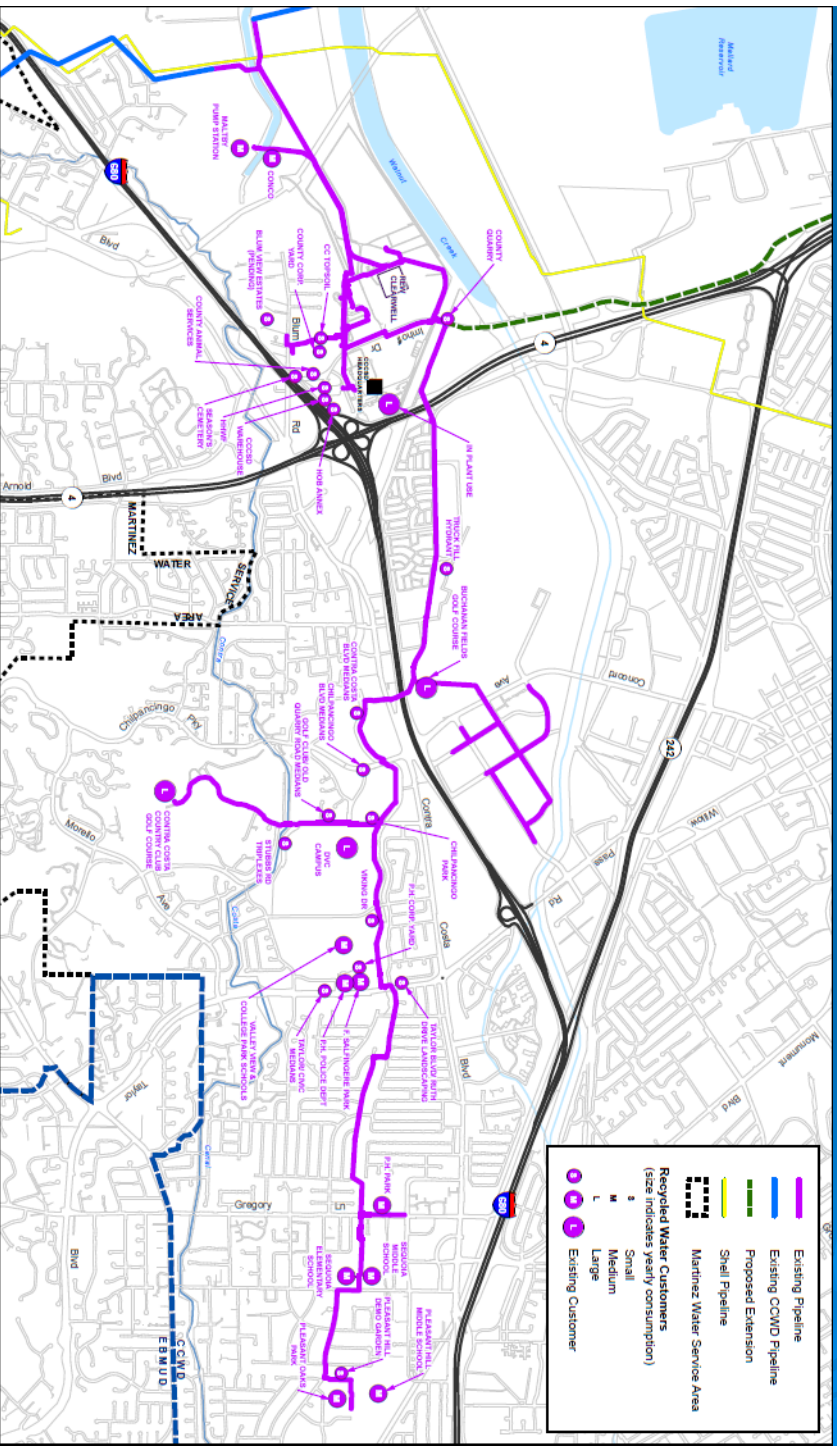


ZONE 1 RECYCLED WATER PROJECT



Recycled Water Program





Contra Costa Country Club



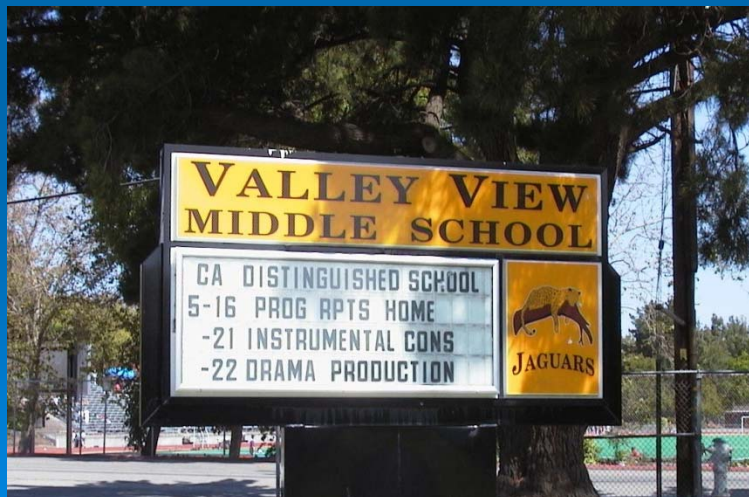
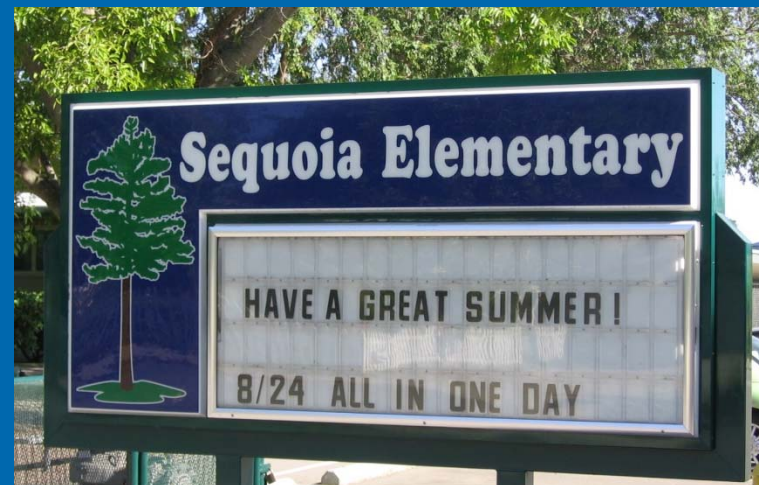
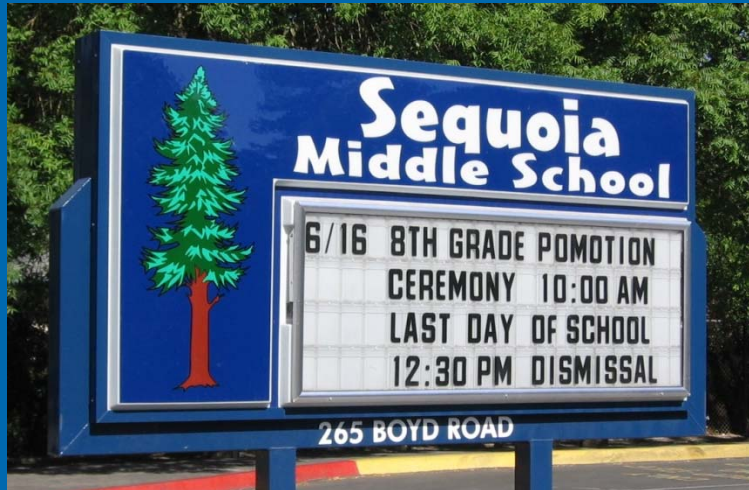
Buchanan Fields



Diablo Valley College



Mt. Diablo Unified School District



Pleasant Hill Park & Recreation District



Contra Costa County Animal Services



Hydrant Truck Filling Program



Toilet & Urinal Flushing

DVC DIABLO VALLEY COLLEGE



TO CONSERVE WATER,
THIS BUILDING USES
RECYCLED WATER
TO FLUSH TOILETS AND URINALS.

Toilet & Urinal Flushing



TO CONSERVE WATER,
THIS BUILDING USES
RECYCLED WATER
TO FLUSH TOILETS
& URINALS.

A circular logo with a stylized wave and a recycling symbol inside, with wavy lines below it.

0609-1213



Concord Landscape Project



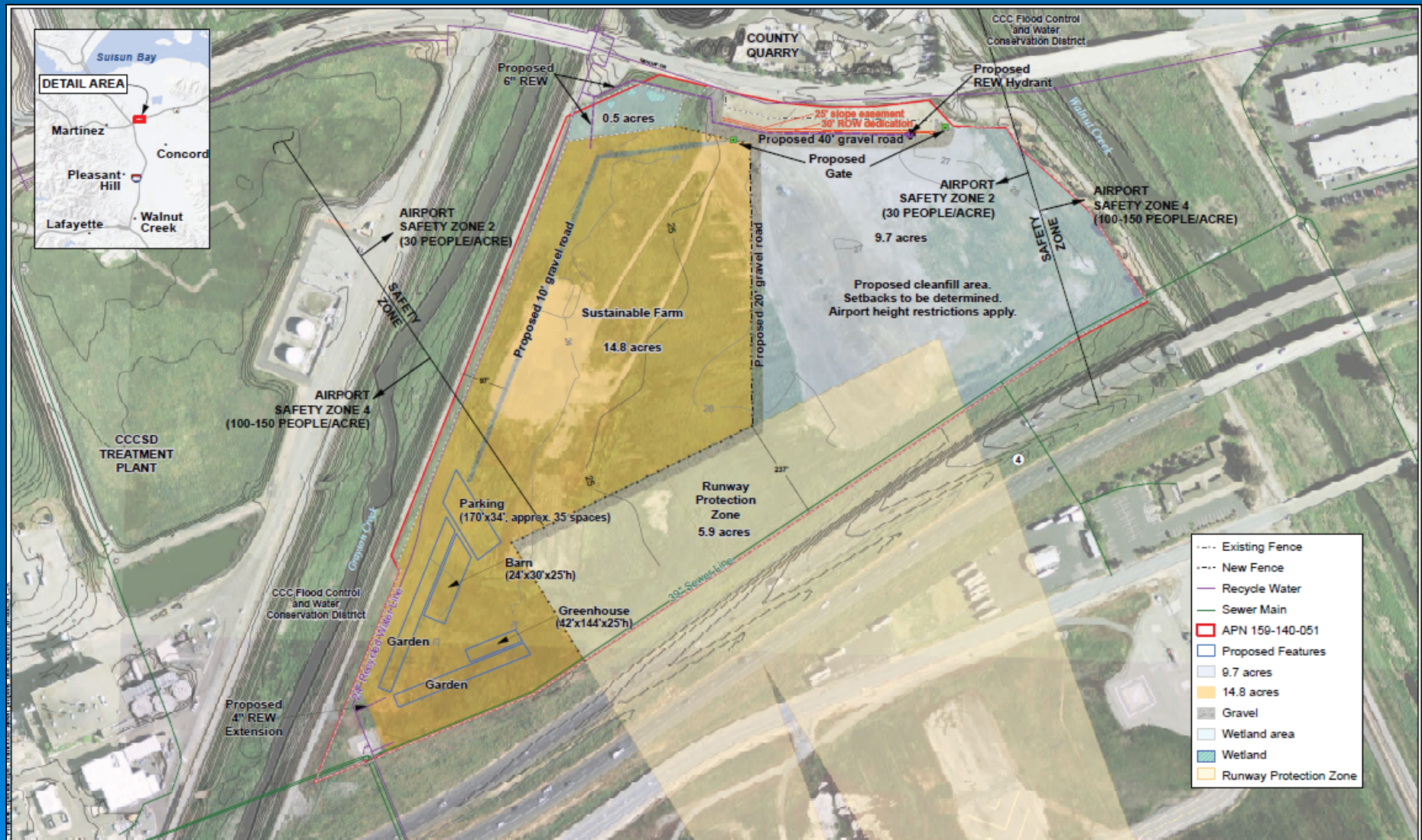
Residential Fill Station



[www.centrsan.org/recycledwater](http://www centralsan.org/recycledwater)



CoCo San Sustainable Farm



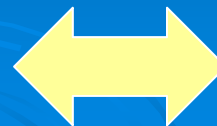
CoCo San Sustainable Farm



Automated Fill Station



0.5 MGD Refinery Project



Concord Naval Weapons Station Redevelopment

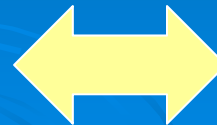


Concord
Community Reuse Plan



**Central Contra Costa
Sanitary District**

Protecting Public Health and the Environment



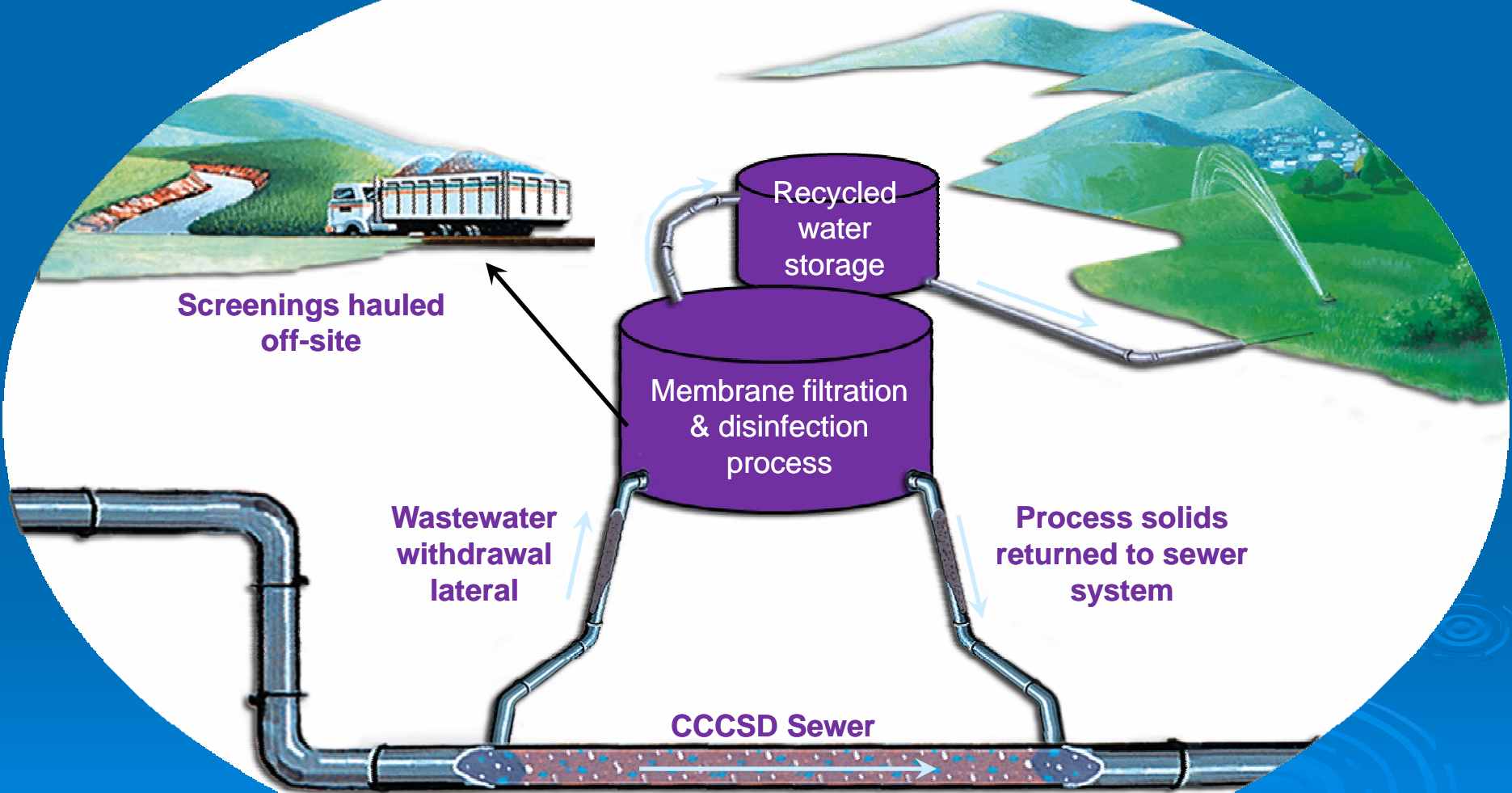
**CONTRA COSTA
WATER DISTRICT**



Diablo Country Club Satellite Facility



Satellite Recycled Water Facility Concept





Recycled Water Wholesale Opportunities

Central Contra Costa Sanitary District

Board Meeting
November 5, 2015

Complex Challenges | Innovative Solutions

rmcwater.com

CCCSD Non-potable Recycled Water Projects-2015

Average Dry Weather Flow – 30.4 mgd

In-plant – 1.1 mgd

Current Zone 1 (S) – 0.5 mgd

Zone 1 Future Commitment (S) – 0.1 mgd

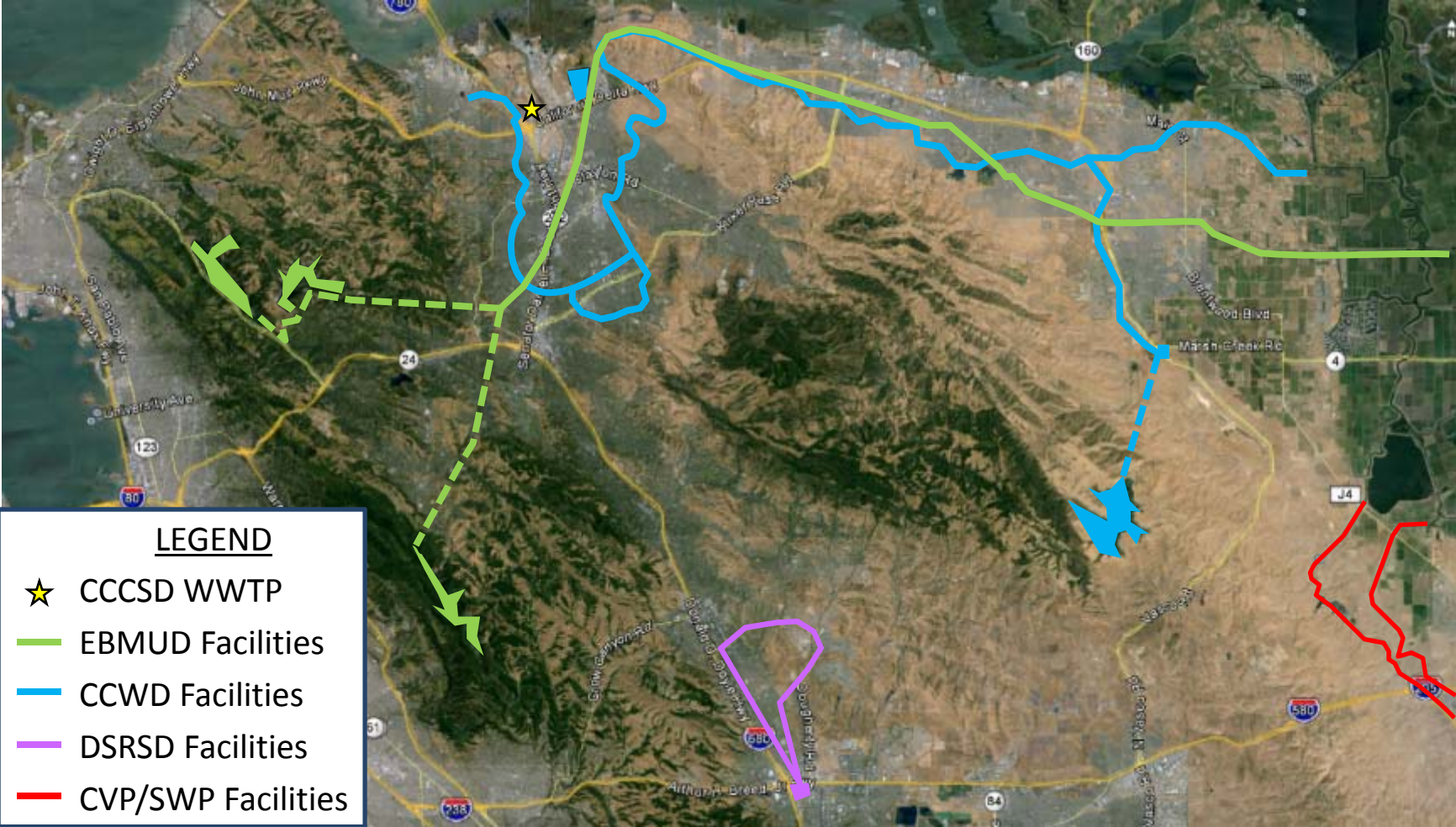
Concord Naval Weapons Station (S) – 2.5 mgd

Shell Refinery (CCWD) – 0.5 mgd

Potential Available Recycled Water 25.7 mgd

(S) = seasonal

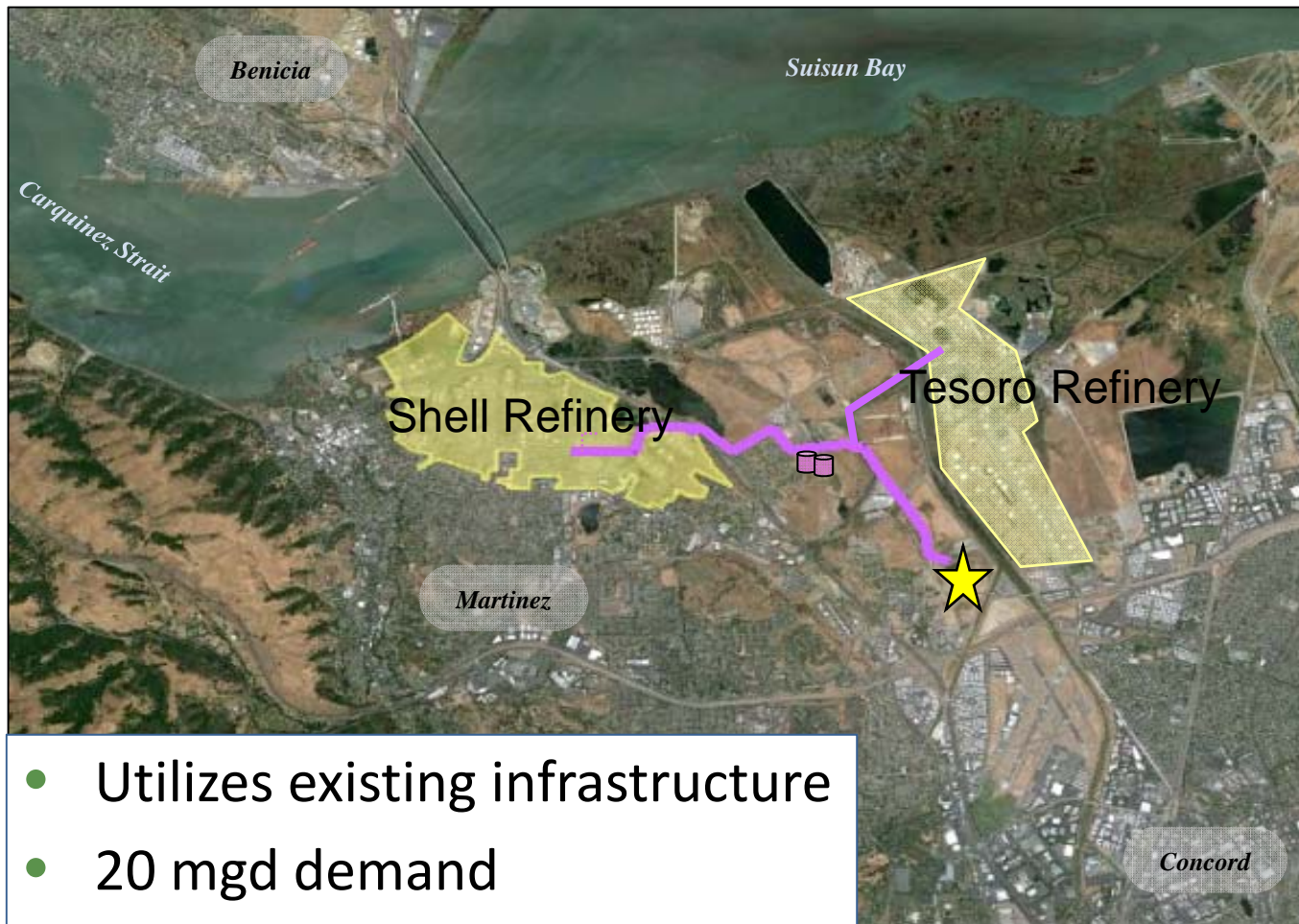
Overview Map of Potential Opportunities



Recycled Water to Ag



Recycled Water to Refineries



Augment Regional Water Supplies?



- DSRSD
- Regional Reliability Partners
 - CCWD
 - EBMUD
 - San Francisco PUC
 - Alameda Co. WD
 - Santa Clara Valley WD
 - Zone 7
 - Marin Municipal WD
 - Bay Area Water Suppliers & Conservation Agencies (BAWSCA)

**Available
Now!**

25 MGD Drought- Proof Water Supply

(925) 228-9500

Questions or Comments?

