



Recycled Water Program Education and Outreach

WaterReuse Inland Empire Chapter Meeting
September 30, 2014

John Wuerth
Recycled Water Program Analyst

Agenda

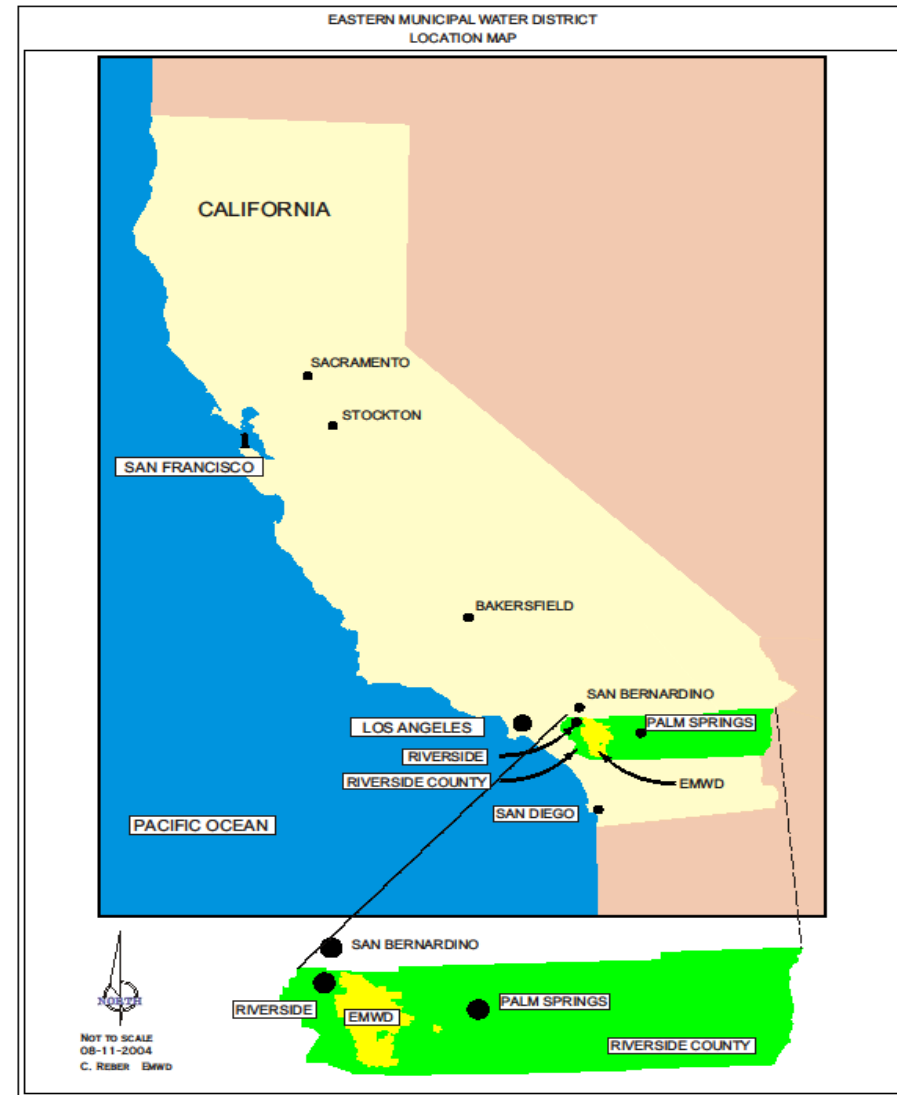


- EMWD Recycled Water Background
- Education
- Collateral Materials / Outreach
- Agency Coordination
- Future

EMWD Overview



- 542 Square Miles
- Population of 768,000 / 45% Ultimate Build-out
- Water, Wastewater and Recycled Water Services
- 7 Cities plus Unincorporated Riverside County



Recycled Water System History



- EMWD Began Treating Wastewater in the 1960's
- Originally Disposed in Ponds & Fields
- In 1991, Began To Develop a Recycled Water "Backbone" to Expand Reuse



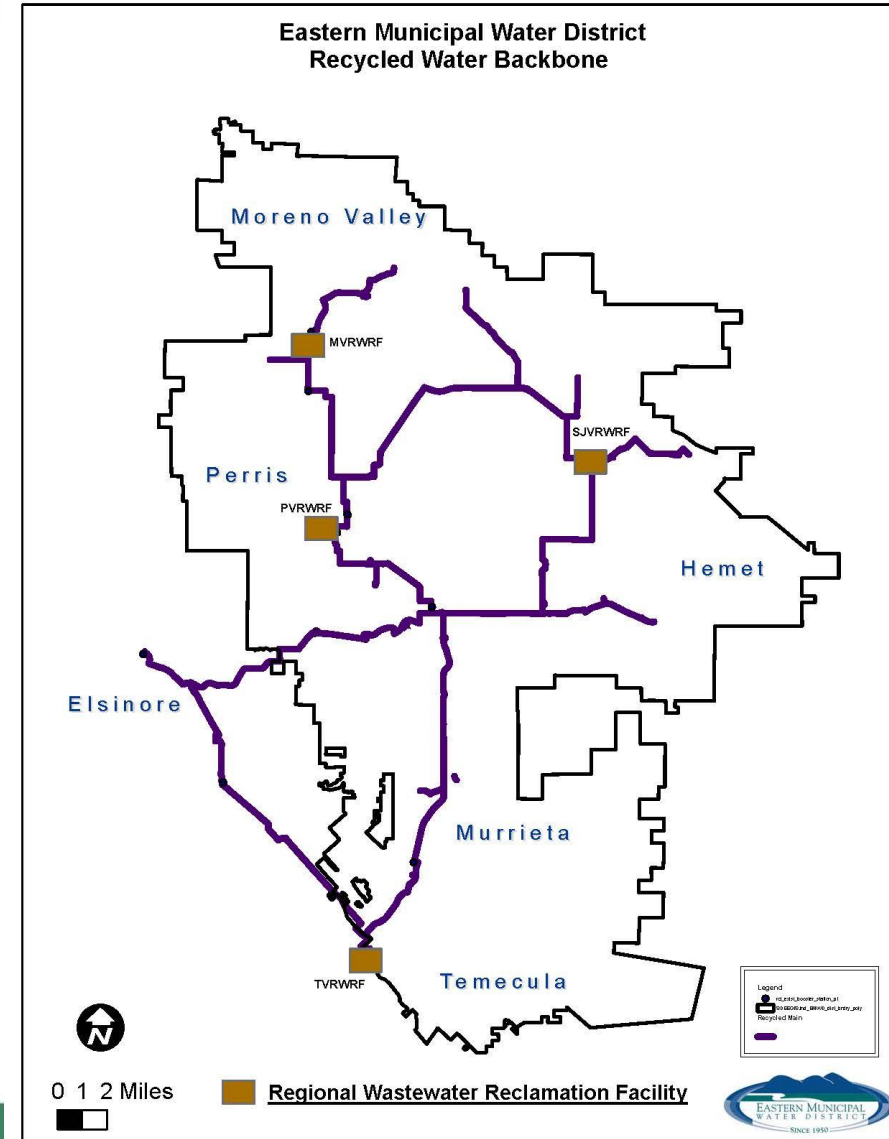
San Jacinto Valley RWWF 1960's



Recycled Water System Overview



- Four Operating RWRf's
- 2013 Production – 47,650 AFY
- Over 200 miles of pipeline
- 1.8 Billion gallons storage
- 4 – Stabilized pressure zones
- \$110M Investment since 2003
- Objective: 100% Beneficial Use



Education - Start Early!



Tell me and I forget.

Teach me and I remember.

Involve me and I learn.

Benjamin Franklin

Educational Programs



- The mission of EMWD's Education Program is to foster understanding of water and wastewater issues and to promote wise water use among the future leaders of our community.
 - Programs include:
 - Write Off
 - Student Art
 - Solar Cup
 - Field Trips/Presentations
 - Assembly Program
 - Community Events
 - Materials

San Jacinto Valley RWRF



Education Center



Collateral Materials

- Customer newsletters
- SMART
- Youth books
- Consistency of message
- Staff involvement



Eastern Municipal Water District

RECYCLED WATER PROGRAM

- EMWD has been recycling water within its service area since 1966.
- Five (5) reclamation facilities, which are linked together, produce secondary and tertiary water totaling approximately 46 million gallons every day.
- The recycled water system features 192 miles of pipeline and 18 pumping facilities.
- EMWD can store more than 2 billion gallons of recycled water. That's equal to three to four months' worth of supply.
- In 2007, EMWD served 210 active accounts with sales of more than 26,000 acre feet.
- EMWD is developing conceptual plans to recharge the San Jacinto Basin (SJB) with desalinated recycled water. The SJB Basin currently provides 15 percent of EMWD's water supply.
- The Recycled Water System Pressurization & Expansion Project will construct:
 - Up to 60,000 feet of 24 - 30-inch diameter recycled water pipeline;
 - Up to 60,000 feet of new 8 - 12-inch distribution pipelines; and
 - Three (3) new steel storage tanks (up to eight million gallons total) to provide the operational storage, flow control and pressure sources needed to provide the "on-demand" service required by municipal customers.

For more information on recycled water services, visit www.emwd.org or call (951) 928-3777 or email recycledwater@emwd.org.

RECYCLED WATER IS S.M.A.R.T.

Safe
Money-saving
Available
Resourceful
Timely

Safe
Recycling water involves treating wastewater to a high level so it can be reused for almost any purpose except drinking.

Money-saving
The cost of recycled water is significantly less than the regular potable (drinking) water rate.

Available
Currently, more than half of EMWD's total production capacity is used. It can be available even if potable (drinking) water is rationed.

Resourceful, Drought-Proof Supply
With more than 56,000 acre-feet of recycled water produced annually by EMWD, recycled water is a significant resource that is available throughout drought cycles.

Timely
To meet future water demands and avoid shortages due to drought, recycled water enables EMWD to reduce its dependence on imported, and increasingly unreliable, imported water.

has proven to be useful in creating a water supply...



Professor Purkis Ponders Purple Pipes

A story about recycled water

Authored and Illustrated by
Alyssa Rossi and Hiana Reyes

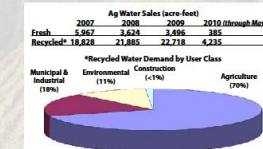
Produced by
Eastern Municipal Water District
and Rancho California Water District



EMWD Ag News

Welcome to the first edition of EMWD Ag News!

This is the first in an occasional series of newsletters for agricultural customers of Eastern Municipal Water District. Agriculture, and the jobs and revenues it has produced, has always been an important segment for EMWD. Although agriculture continues to face serious economic challenges, since 2007 (including parks, golf courses, schools, etc.) are represented below:



EMWD's plans for the near future for enhanced water management

Fixed-base meter reading: In March, the EMWD board approved and authorized a new meter reading system to include retrofitting approximately 5,100 residential meters. In addition, 71 recycled water meters are set to be online by the end of June, allowing daily demand monitoring. Estimated cost of this project is \$1.4 million and is funded from the General District's Replacement and System Betterment Construction Reserve.

This latest technology uses transmitters on posts throughout the District to interact wirelessly with (continued on page 3)



Rates developed with Recycled Water Advisory Committee input

EMWD promotes an "interior" approach coordinating with regional stakeholders, such as the Recycled Water Advisory Committee (RWAC). RWAC members and who they represent included Andy Conners (Ag), Ralph Daily (Quality Turf), Larry Minor (Agri-Empire/Valley-Wide), Esie Bostona (Bostona Dairy), Don Bean (Ag), Ralph Scherfberg (City of Moreno Valley, Landscaping), Bruce Scott (Scott Bros. Dairy and In-Bau customer), Lewis Sweeney (Inland Empire Energy Center), and Scott Sewell (California Department of Fish and Game, Environmental).

The enterprise process impacts recycled water planning, conditioning, design, construction, site management and promoting public acceptance.

After meeting several times since September 2009, the RWAC gave its recommendations to EMWD's Board of Directors. On March 24, the Board approved the following:

1. Increase rates 4 percent/year for all customers except California Department of Fish and Game and those using construction water.
2. Increase sewer customers' share of operating and maintenance costs for recycled water storage and distribution equal to the cost of discharge (approximately \$0.50/month).
3. Fund and support operational enhancements to improve water service.
4. Provide annual contract renewals.
5. Enhance customer communications and notifications.
6. Review system performance in two years.

Rates information

Detailed information on both fresh and recycled water rates can be found at www.emwd.org.

EMWD Ag News

Visit us on the Internet at www.emwd.org.

Published for agricultural customers of Eastern Municipal Water District by the Community Involvement Department of Eastern Municipal Water District.

EMWD

2270 Trumble Road, PO Box 8300, Perris, CA 92572-8300

EMWD Board of Directors

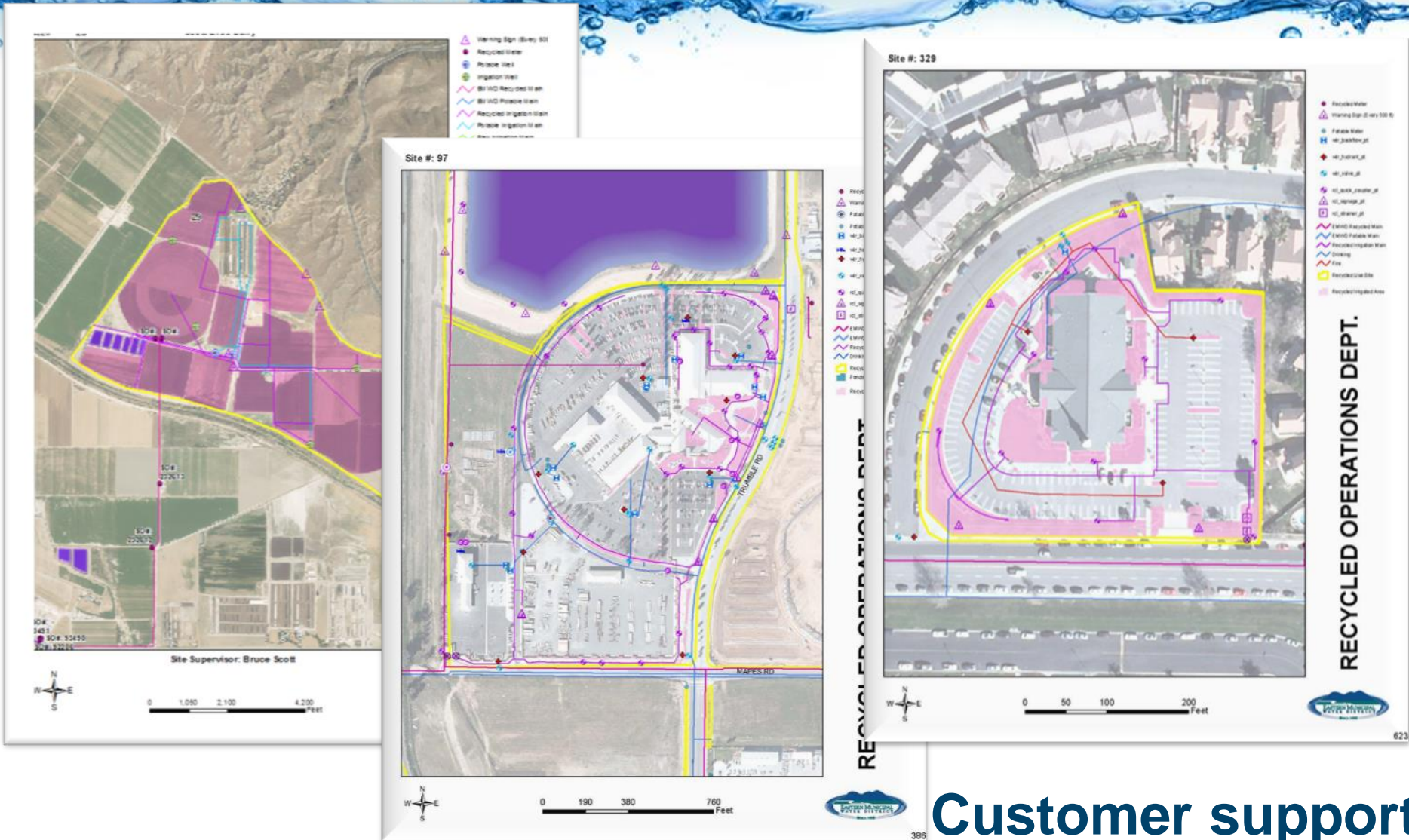
Division 1: Philip K. Fude
Division 2: Joseph J. Kuebler, CFA - Vice President
Division 3: Randy A. Record, Director of Metropolitan Water District
Division 4: Ronald E. Sals - President
Division 5: David J. Slavson

Questions/comments about the EMWD Ag News?

Contact Community Involvement staff at x4236, community@emwd.org

June 2010

Customer Use Site Maps



Customer support

Outreach



- Video – YouTube
- Customer presentations
 - HOA's
 - City Council
 - Marketing
- WaterReuse
 - California
 - National
 - Customer of the Year Award
- Aligning:
 - Vision
 - Message
 - Management
 - Staff
 - Skillsets



Recycled Water Program

Agency Coordination

- Mandatory Use Policy = “Stakeholder – Alignment”
- Recycled water changes EMWD’s role
 - Regulatory
- 20+ Land – Use Agencies
- “Integrated Business Process Flow” (IBPF)
- Challenges:
 - Roles
 - Costs
 - Schedule



- Indirect Potable Reuse
 - Currently developing “framework plan”
- School District collaboration
 - Western Center Academy
- Leverage Opportunities – Drought!!!
- “Resource Management” – Recycled Water’s Role
- Partnerships are critical!



Questions?

John Wuerth
951-928-3777 ext.4334
wuerthj@emwd.org