



THE CITY OF

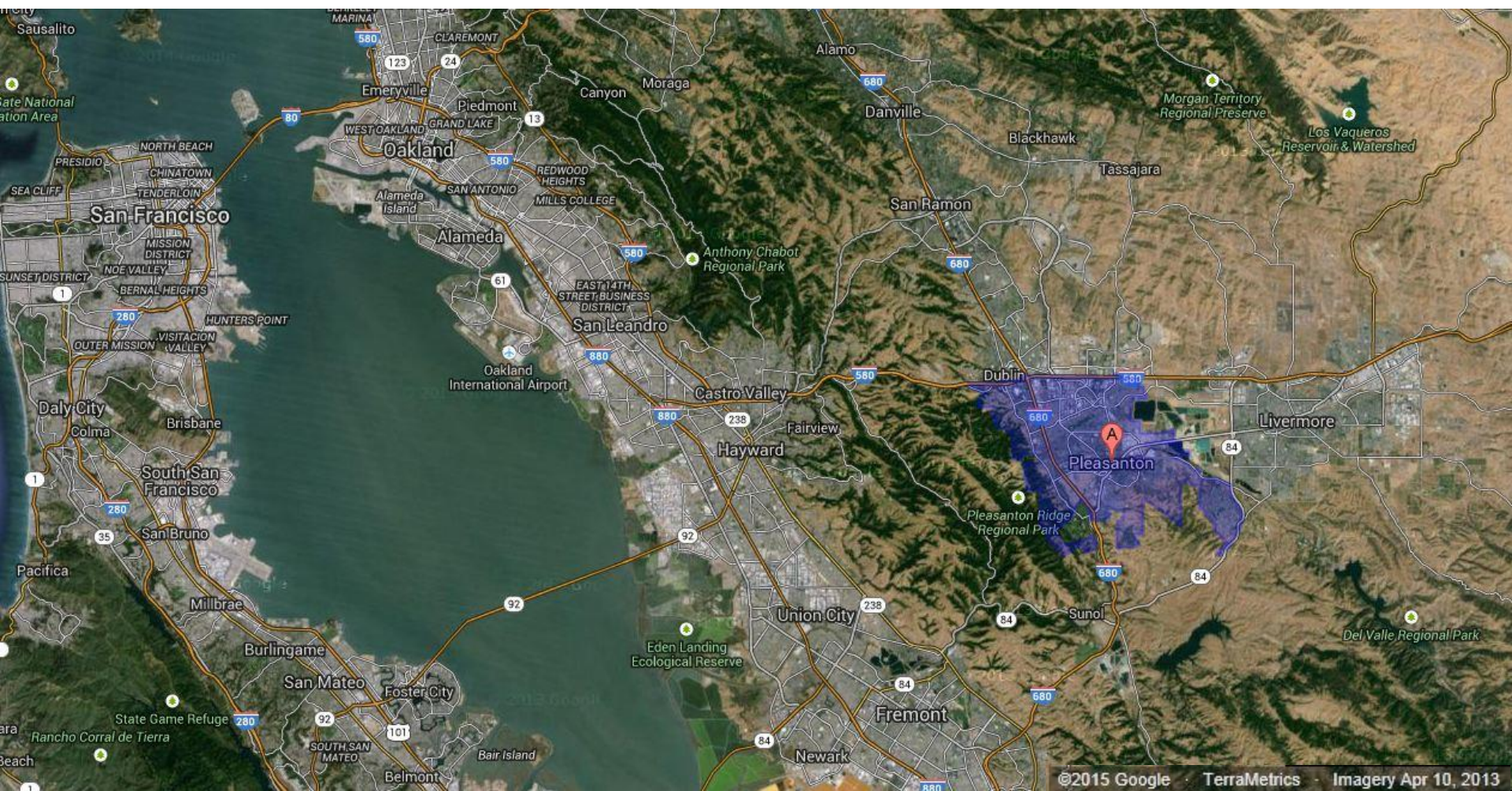


PLEASANTON®

Recycled Water Program 2015

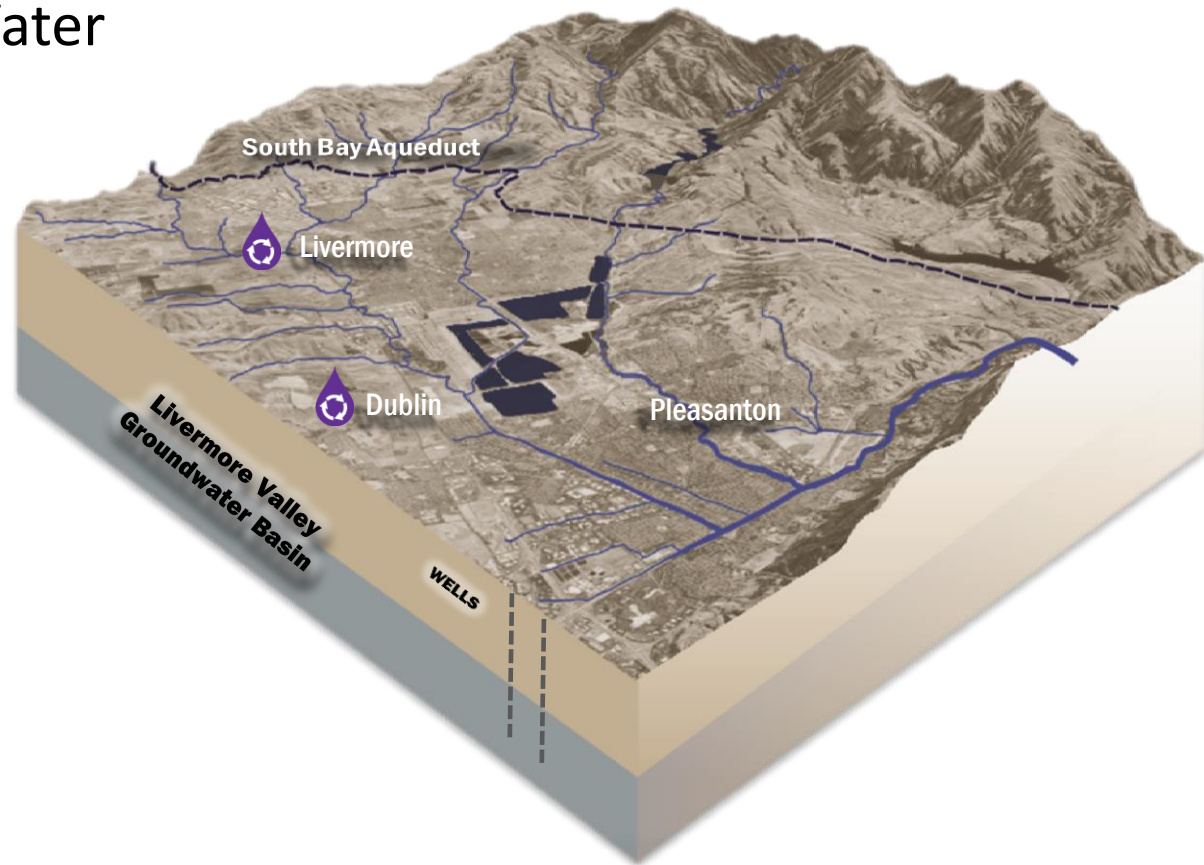
February 20, 2015

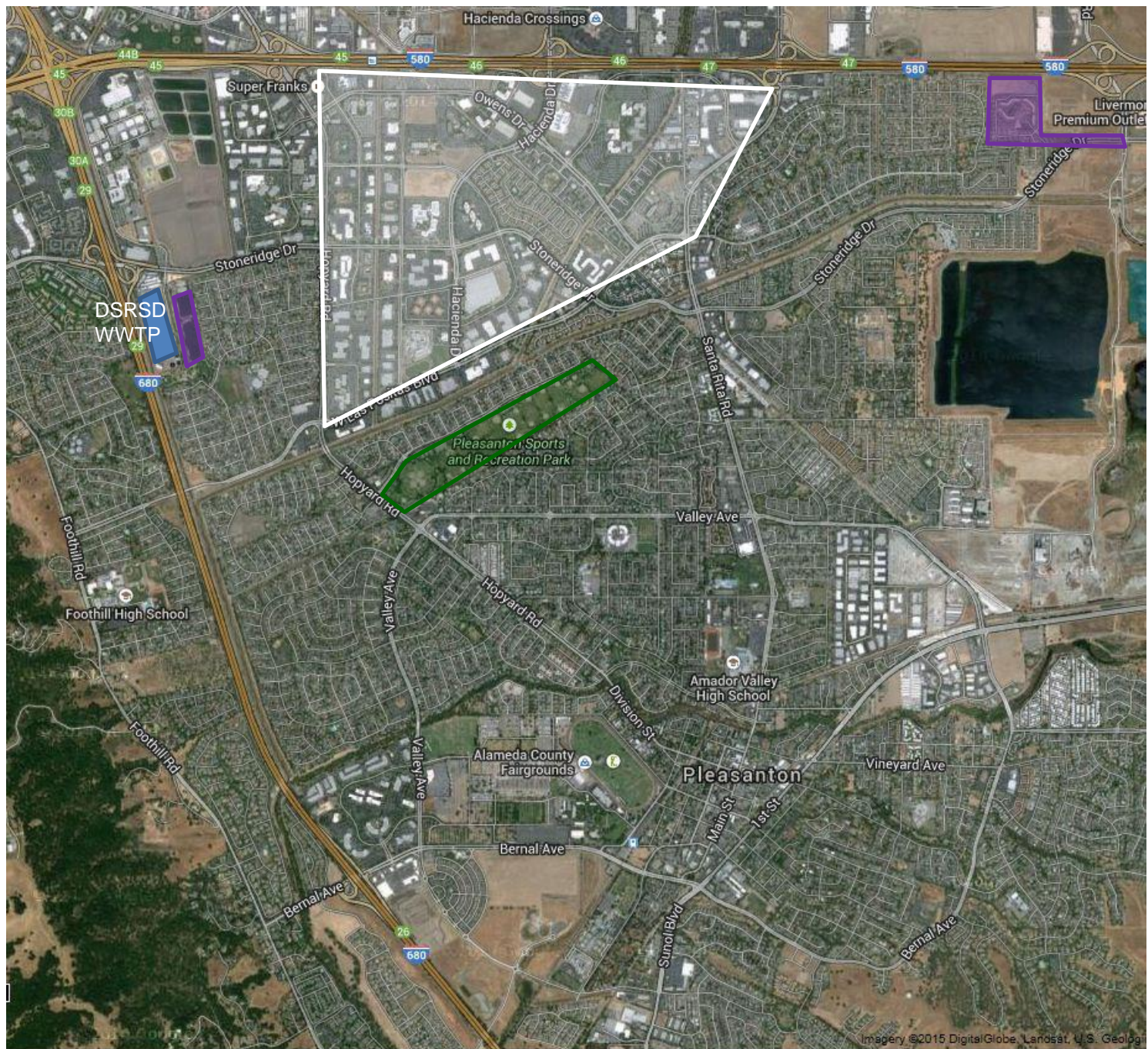
Rita Di Candia



Pleasanton's Water Supply

- Blend of surface water & ground water
 - ~80% Zone 7 Water Agency
 - ~20% City wells





LWRP

Milestones of a Developing a RW Program



- July 2013 - Completed Recycled Water Feasibility Study
- Nov. 2013 – Finalized recycled water supply agreements with DSRSD & DERWA
- April 2014 – Began application process for CWSRF loan
- Sept. 2014 – Completed/filed CEQA
- Nov. 2014 – submitted Title 22 Engineering Report to RWB & DDW
- Sept. 2014 to Jan. 2015 – Design phase
- Preparing to advertise for construction bid - Engineers estimate: \$15 million

Project Overview



- Recycled water demand: 1,400 afy
- Distribution System will include:
 - 9.8 miles of new rw pipe (6" – 20" diameter)
 - 4.5 miles of existing potable pipe repurposed for rw
 - 133 irrigation meter connections
- Connection to existing 8 MG water storage facility
- Water supply: partnerships with DSRSD & Livermore for filtration and disinfection treatment of secondary effluent.

Recycled Water Supply Agreements



- **DERWA – Pleasanton:**

- Terms outlined for providing up to 500 AFY once Pleasanton has a rw customer at agreed cost
- DSRSD RWTP 1.9 MGD Expansion: City provides a buy-in contribution & pays a proportionate share



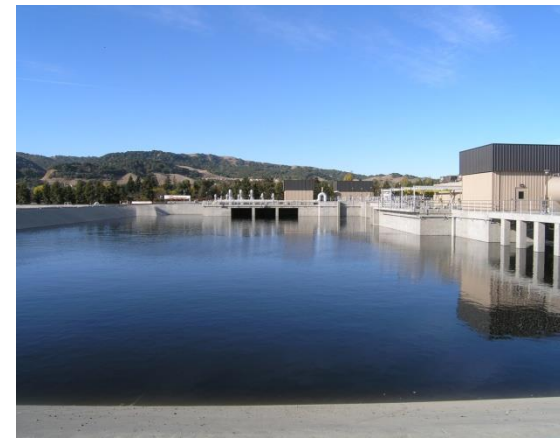
- **DSRSD – Pleasanton:**

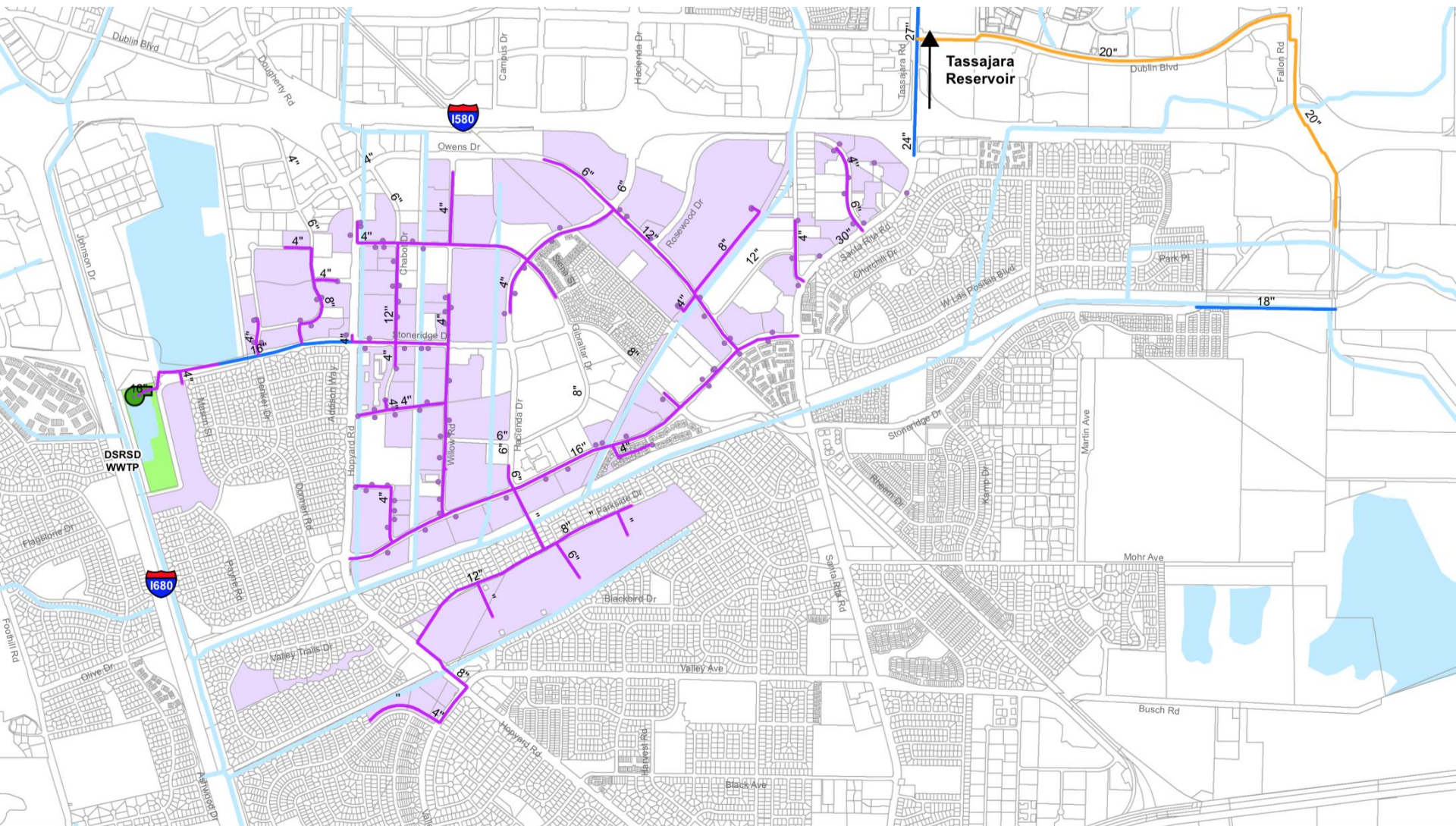
- Pleasanton retains the rights to its wastewater & DSRSD may use what Pleasanton's rw program does not need
- City's excess storage in 8 MG reservoir available for DSRSD
- CWR pipeline available for use by Pleasanton to close loop with Livermore.



- **Livermore – Pleasanton:**

- Livermore will supply up to 100 AFY for El Charro area customers
- Pleasanton retains rights to wastewater from Ruby Hills (0.9 MGD)





Legend

DSRSD Facilities

- WWTTP
- Recycled Water Pump Station

Recycled Water Pipelines

- Phase 1A
- Clean Water Revival
- Existing

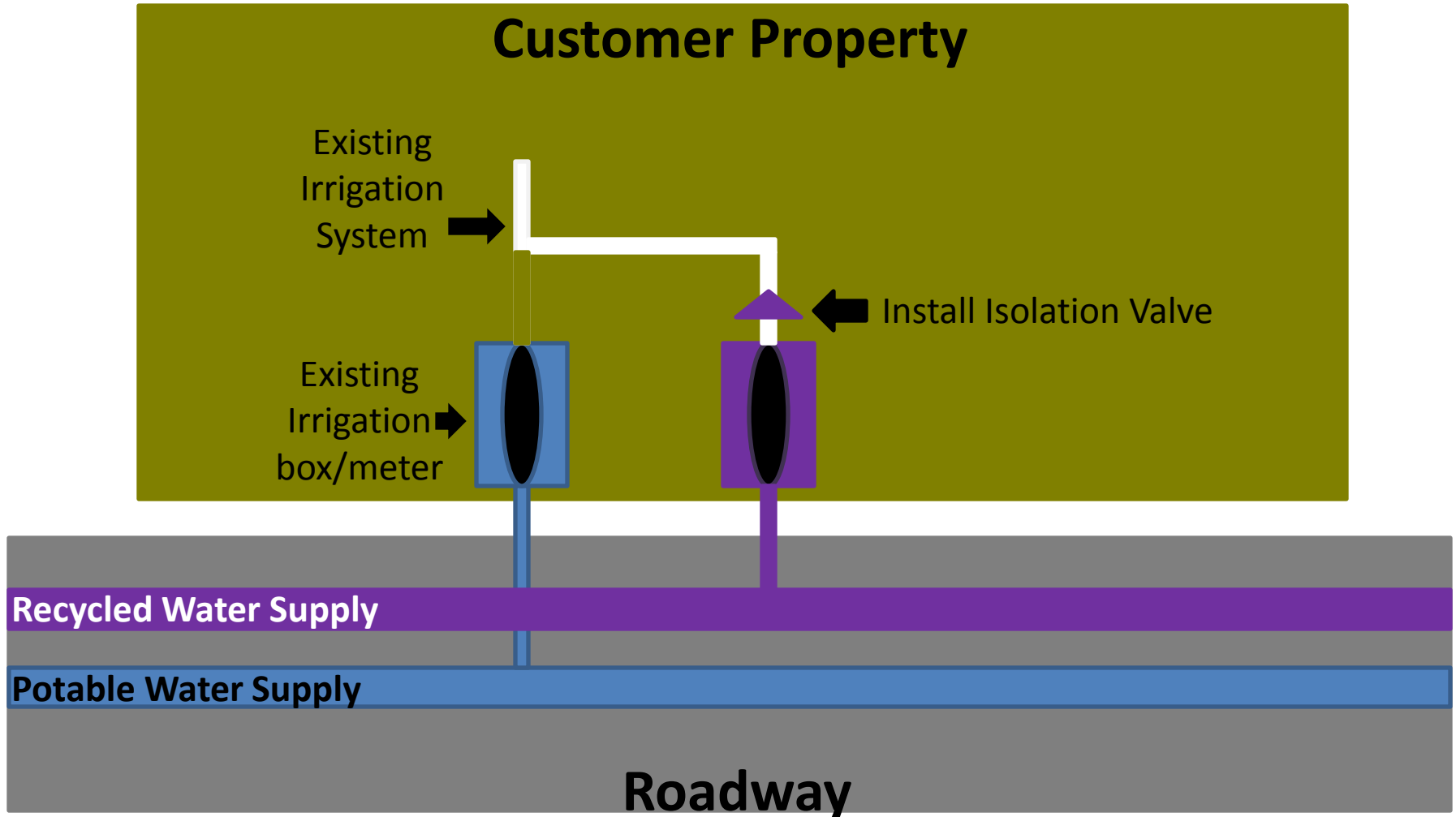
Potential Users

- Served by Phase 1A Alignment
- Waterbody



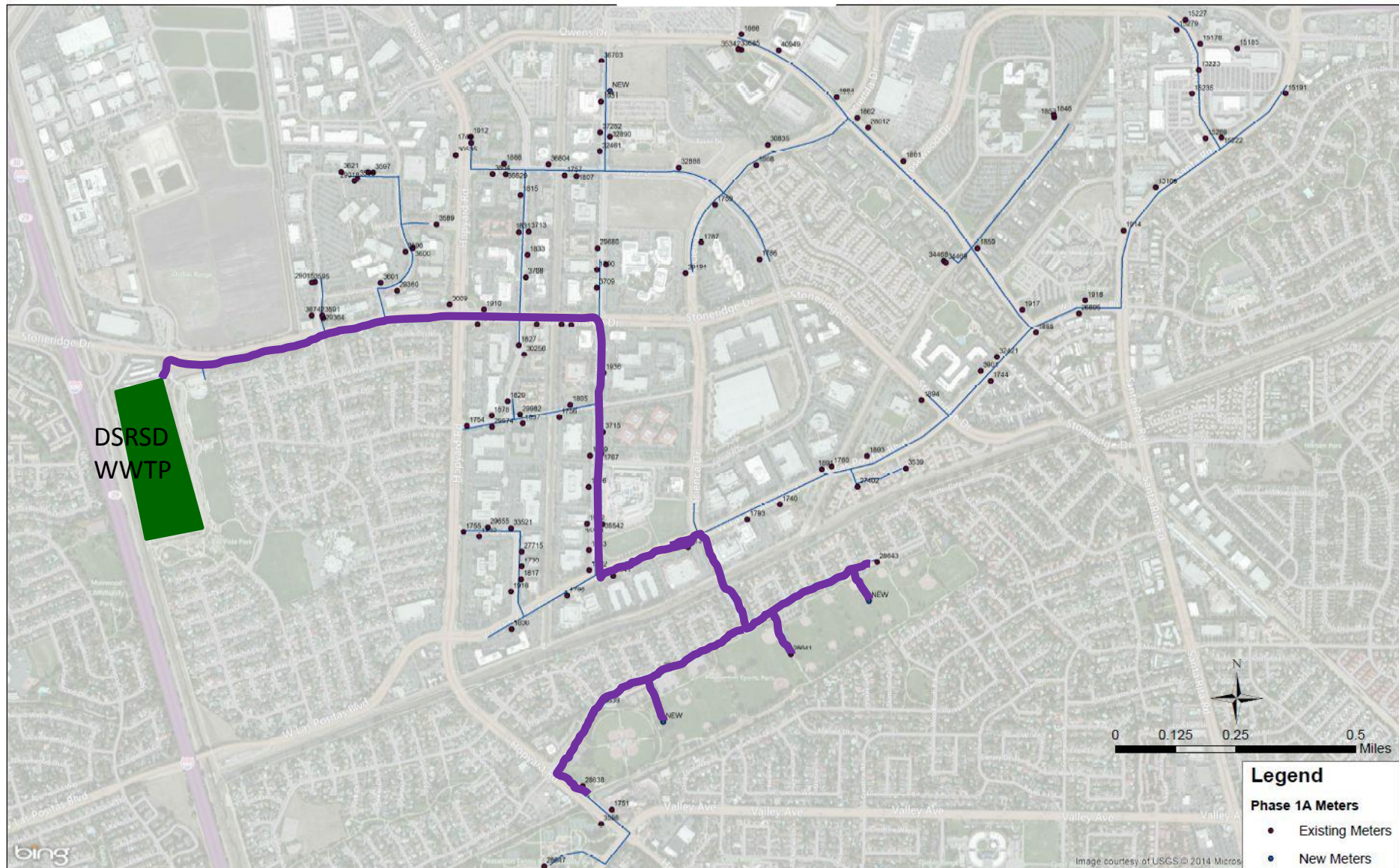
Phase 1A Recycled Water System

Customer Conversions



Construction Goal for 2015

Date: 11/17/2014





Thank you

Any Questions?



Customer Responsibilities/Costs



- Submission of rw permit (including site drawings)*/\$75 fee
- Outfit valves with tags
- Convert hose bibs to rw quick couplers
- Install RW signs
- Adjustments necessary to ensure:
 - Food eating tables not sprayed
 - Outdoor drinking fountains shielded from spray
- Accompany City staff during inspections
- Once rw meter box is in place, outfit w/isolation valve**

