

# **San Diego Water Reuse Meeting**

## **August 14, 2013**

**Presented by**  
**Fisayo Osibodu**  
**San Diego Water Board**





# Main Recycled Water Issues

- Renewal of Conditional Waiver for Discharges of Recycled Water to Land
- Update on Salt & Nutrient Management Planning



# Renewal of Conditional Waiver for Recycled Water

- Permitting Authority/Process
- Options for Permitting Recycled Water
- Overview of Waiver
- Types of Discharges covered under Waiver
- Specific Waiver Conditions





# Regional Board Permitting Authority

- ROWD/Report required to discharge recycled water (Sections 13260 & 13522.5 of CWC)
- ROWD/Application for WDRs must be filed at least 140 days prior to discharge
- WDRs have annual fee
- WDRs contain the following:
  - Findings
  - Effluent limitations
  - Standard provisions
  - Sludge requirements
  - Monitoring and reporting program





# Options for Permitting Recycled Water

## 1. Water Discharge Requirements (WDRs)

## 2. Water Reclamation Requirements

## 3. Master Reclamation Permit

- Issued to supplier, distributor or both
- Includes WDRs
- Includes requirements to enforce rules and regs.
- Requirement to conduct end use site inspections
- Submit a quarterly report to Water Board





# Overview of Conditional Recycled Water Waiver

- Waives requirement to submit ROWD and obtain permit for certain discharges
- Must not be subject to NPDES permit
- Consistent with basin plan and best interest of the public
- Not to exceed 5 years (renewable)
- Current waiver due for renewal in 2014
- Planning public release and soliciting comments





# Eligible Discharges

- Short term discharges of recycled water not exceeding 365 days
- Discharges from permanent recycled water projects prior to receiving a Water Board permit (not to exceed 365 days).





# Waiver Conditions for Short Term Discharges

- Submit NOI describing discharge and BMPs to be implemented
- Letter stating compliance with Title 22 and identifying monitoring
- Information demonstrating compliance with waiver conditions and recycled water regs
- No annual fee
- Only valid for 365 days





# Waiver Conditions for Permanent Recycled Water Projects

- Submit ROWD demonstrating compliance with basin plan, and applicable recycled water policies and regs
- Letter from CDPH
- Information demonstrating compliance with waiver conditions and recycled water regs
- ROWD must include list of use sites, copy of rules and regs, and proposed monitoring
- Annual fee required





# Comments or Questions on Recycled Water Waiver?

Contact Fisayo Osibodu at 858-637-5594 or at [\*\*oosibodu@waterboards.ca.gov\*\*](mailto:oosibodu@waterboards.ca.gov)





# Salt & Nutrient Management Planning Update

- SNMPs required by State Board Recycled Water Policy
- SNMPs to be developed for all basins in the state by May 2014
- Led and funded by local stakeholders
- Allows for basin wide management of salts and nutrients
- Streamlined permitting of recycled water projects





# Key SNMP Elements Required by the State Recycled Water Policy

- Monitoring Plan
- Water recycling and stormwater recharge goals
- Salt and nutrient source identification
- Basin assimilative capacity analysis
- Fate and transport of salts and nutrients
- Implementation measures to manage salts and nutrients
- Antidegradation analysis





# SNMP Guidelines

- SNMP Guidelines (endorsed by San Diego Water Board)
- Guidelines outlines a tiered approach for SNMP development
- Groups basins into 5 tiers (Tier A-E)
- Based on size, complexity, level of municipal use, groundwater quality, etc





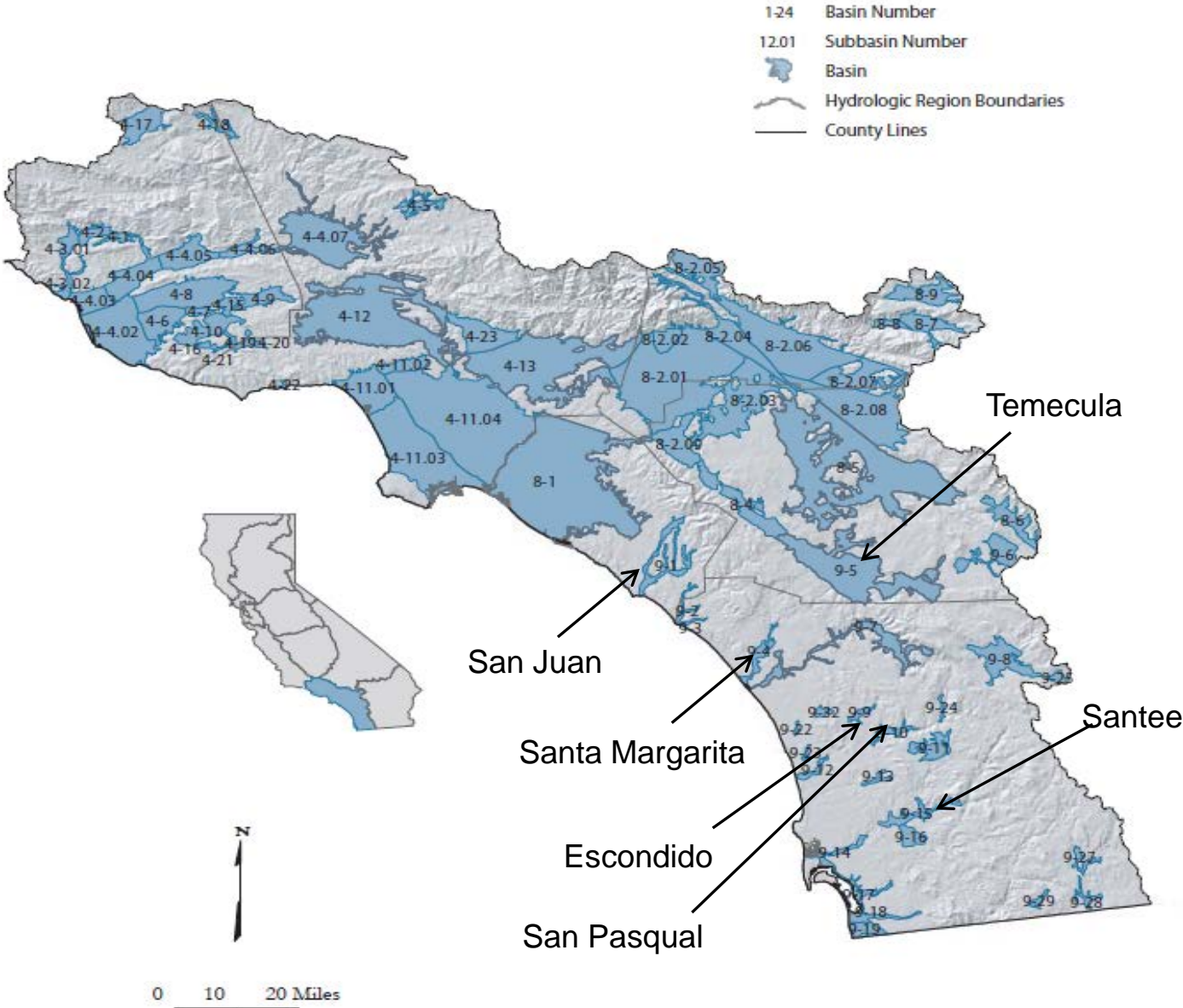
# Status of Planning Efforts

SNMP Workshop was held at Water Authority Office on July 18, 2013

<b>Basin</b>	<b>Lead Agency</b>	<b>Tier</b>
<b>San Pasqual Valley</b>	<b>City of San Diego</b>	<b>A</b>
<b>Lower Santa Margarita</b>	<b>USMC Camp Pendleton</b>	<b>A</b>
<b>Santee</b>	<b>Padre Dam</b>	<b>A</b>
<b>Escondido</b>	<b>Rincon Del Diablo</b>	<b>B</b>
<b>Gower</b>	<b>Ramona Municipal WD</b>	<b>C</b>
<b>Temecula</b>	<b>Rancho California WD</b>	<b>A</b>
<b>San Juan</b>	<b>SOCWA</b>	<b>A</b>
San Onofre, San Mateo	USMC Camp Pendleton	B
Small coastal and inland basins	Water Authority	D & E



# Map of Groundwater Basins





# SNMP Outcomes

- Stakeholders are to identify implementation measures to manage salts & nutrients
- Regional Boards prepare basin plan amendment based on SNMP implementation measures
- SNMPs can recommend modifying water quality objectives, ben uses, or Regional Board policies





# Comments or Questions

Contact Fisayo Osibodu at 858-637-5594 or at [oosibodu@waterboards.ca.gov](mailto:oosibodu@waterboards.ca.gov)

