

The Sanitation Districts & Water Reuse

Monica Gasca
Jodie Lanza

December 1, 2015





Mission Statement

- To **protect public health and the environment** through innovative and cost effective wastewater and solid waste management, and in doing so **convert waste into resources** such as **recycled water**, energy, and recycled materials.



Long History of Water Reuse

**REPORT UPON
THE RECLAMATION OF WATER
FROM SEWAGE AND INDUSTRIAL WASTES
IN LOS ANGELES COUNTY, CALIFORNIA**

APRIL, 1949

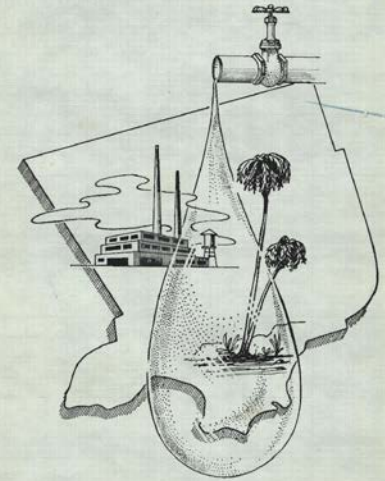
**A Report Upon
THE POTENTIAL RECLAMATION
OF SEWAGE
Now Wasting To The Ocean
In Los Angeles County**

H. E. HEDGER
CHIEF ENGINEER, COUNTY FLOOD CONTROL DISTRICT

A M RAWN
CHIEF ENGINEER AND GENERAL MANAGER,
COUNTY SANITATION DISTRICTS

NOVEMBER, 1958

**A PLAN FOR
WATER RE-USE**



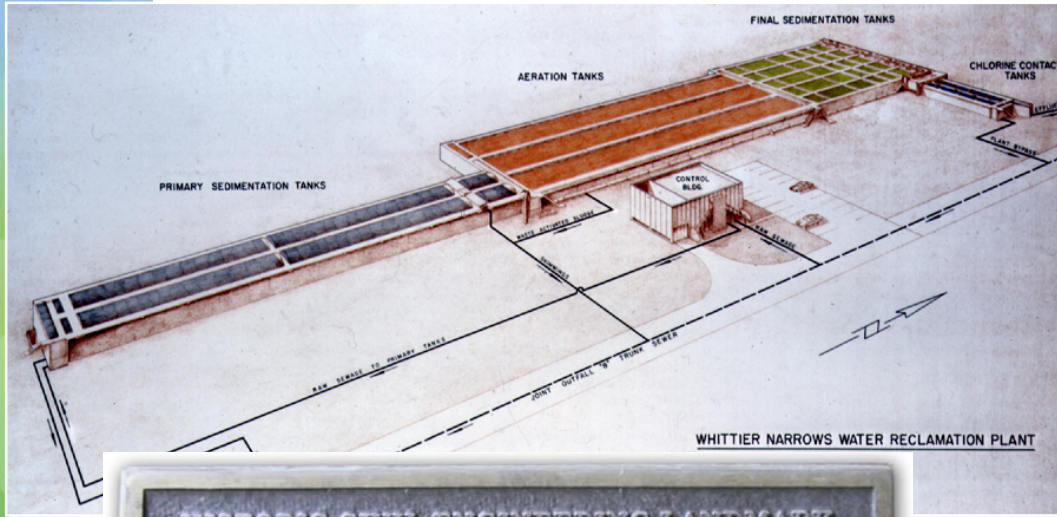
**FOR THE DIRECTORS
OF THE COUNTY SANITATION DISTRICTS OF LOS ANGELES COUNTY, CALIFORNIA**
JOHN D. PARKHURST **CHIEF ENGINEER & GENERAL MANAGER**

JULY 1963





Water Reuse Begins

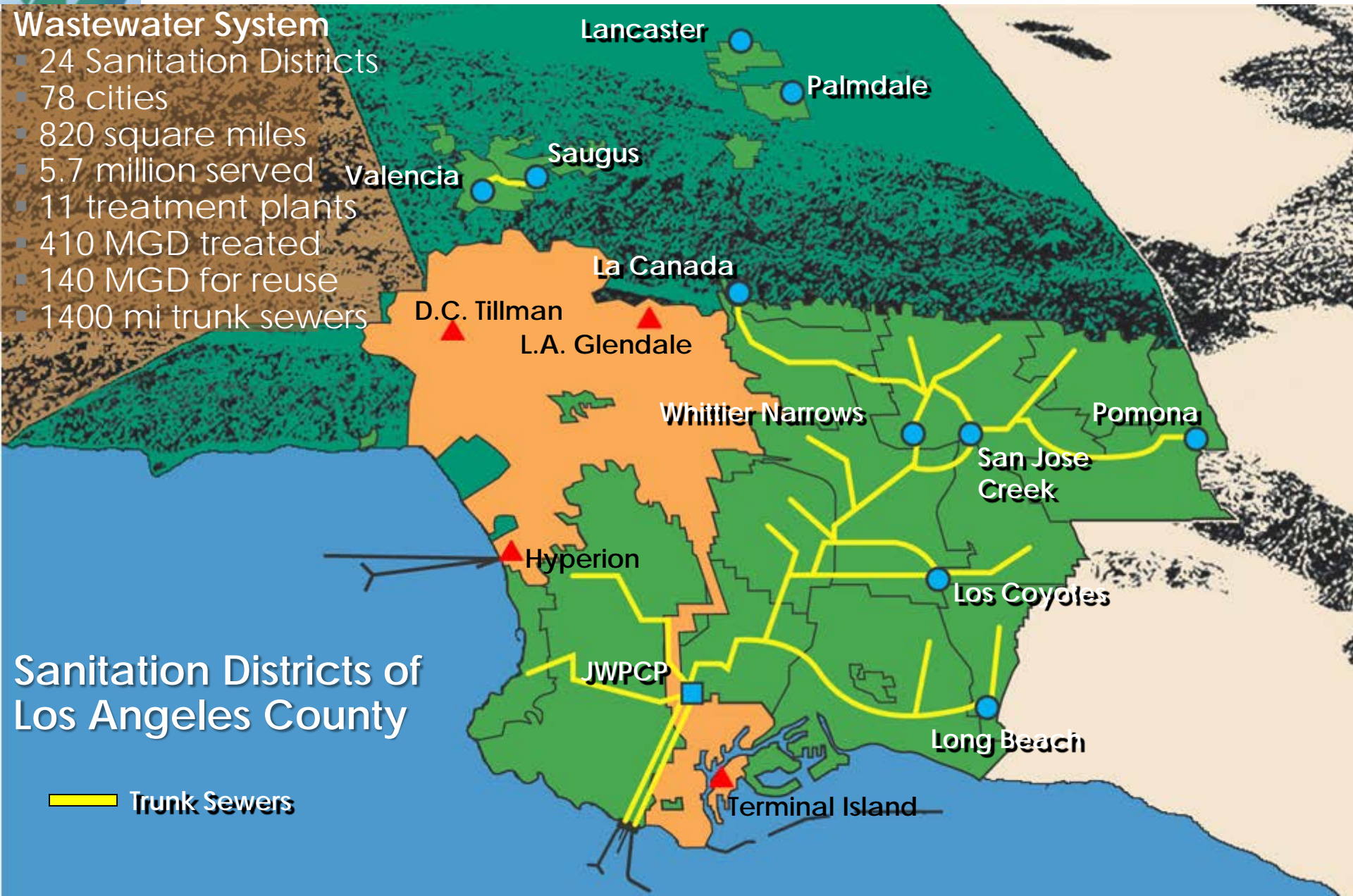




Wastewater Treatment Facilities

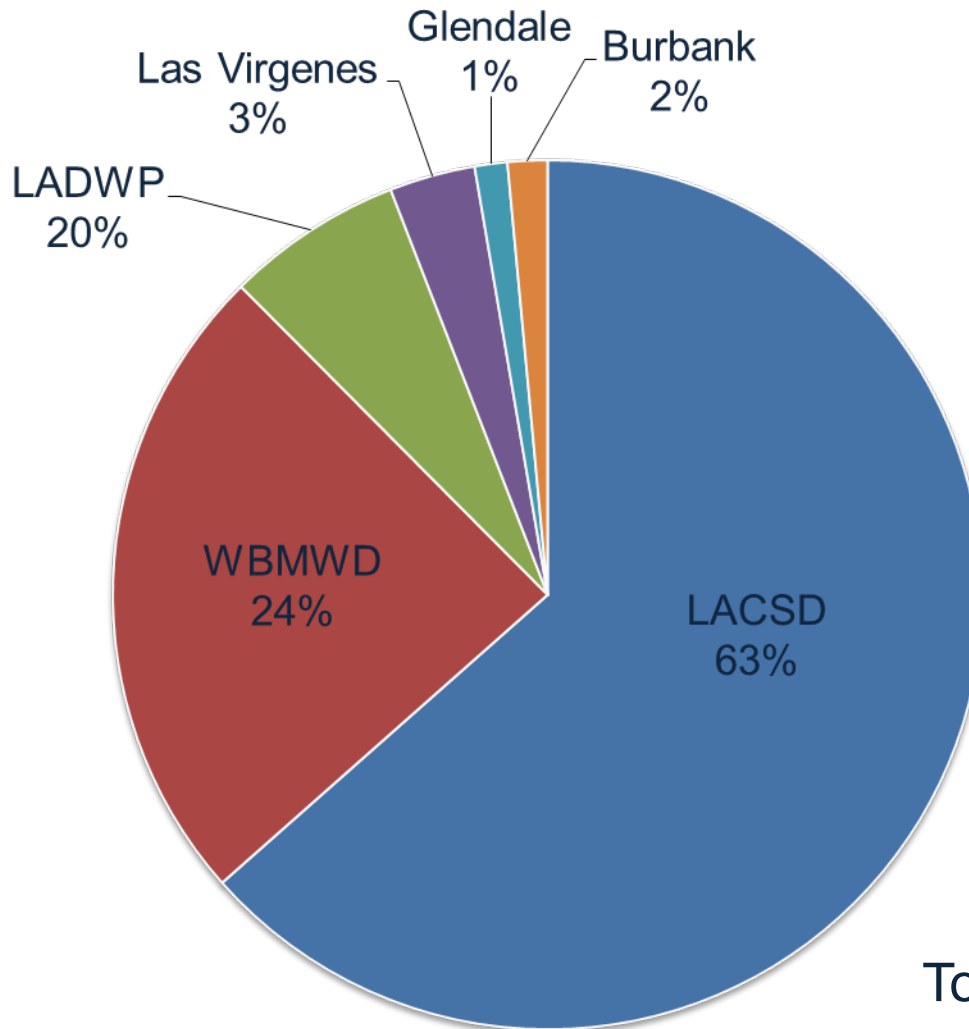
Wastewater System

- 24 Sanitation Districts
- 78 cities
- 820 square miles
- 5.7 million served
- 11 treatment plants
- 410 MGD treated
- 140 MGD for reuse
- 1400 mi trunk sewers





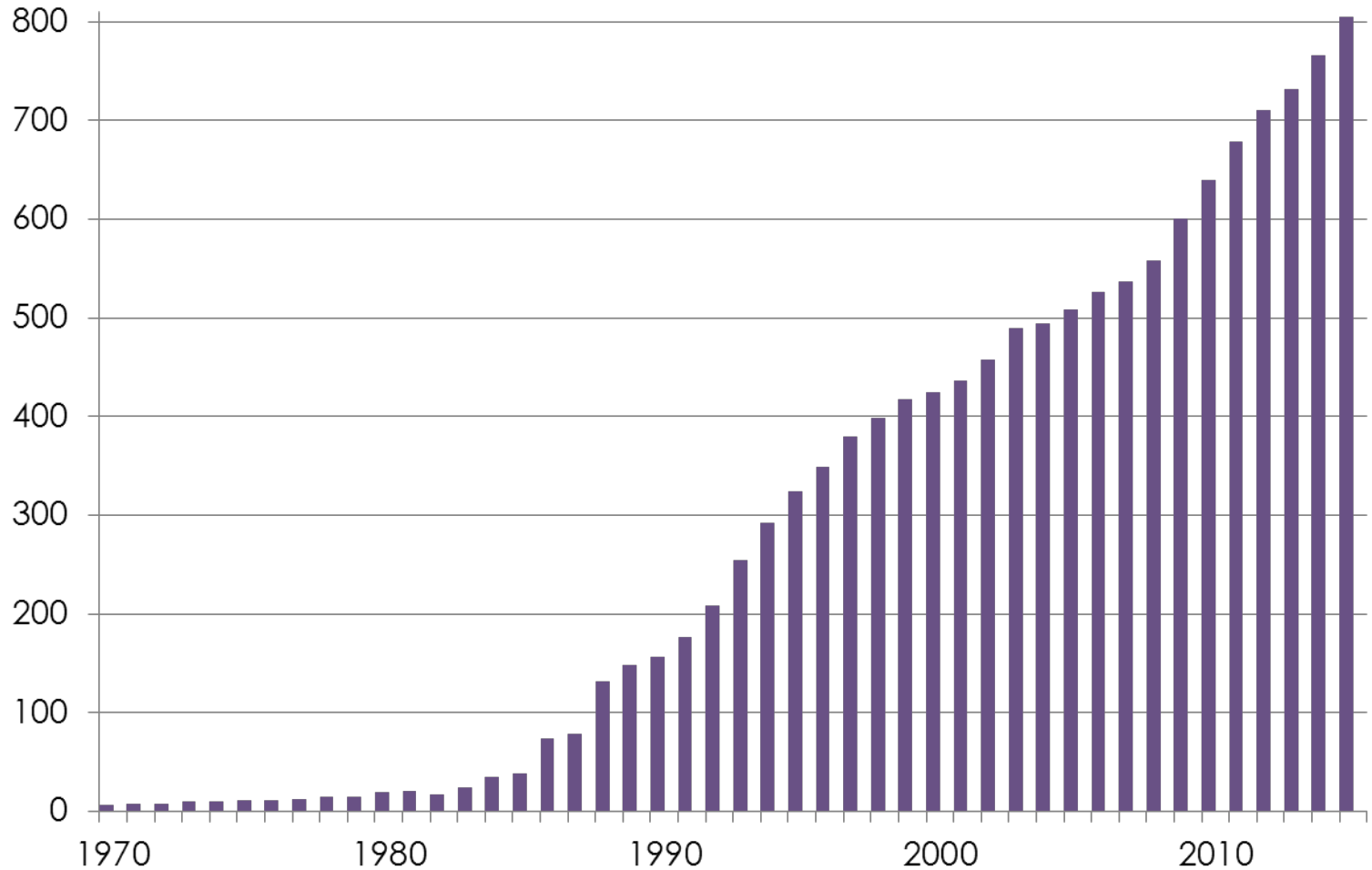
LA County Recycled Water Use



Total = 160,000 AF

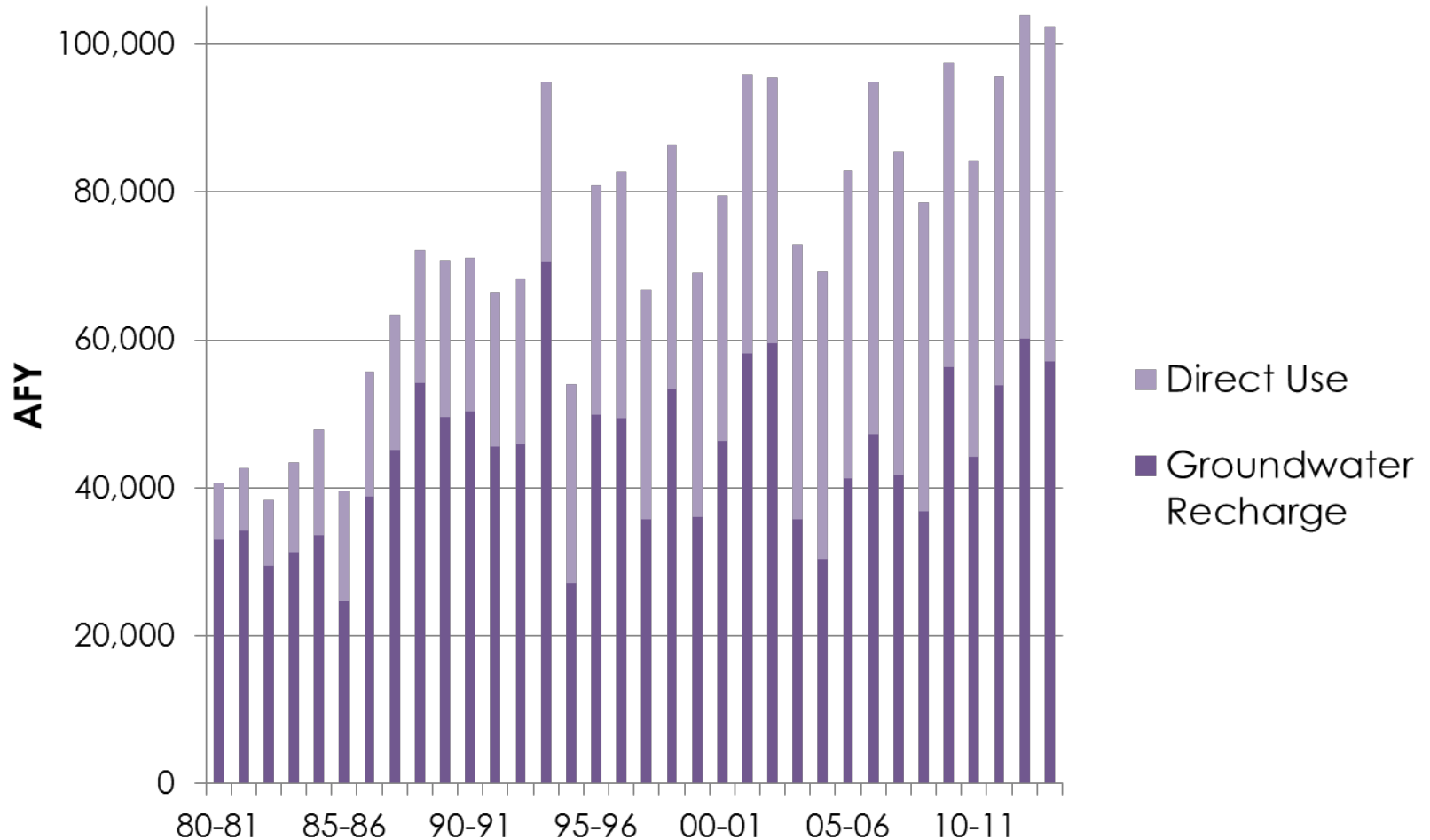


Number of Reuse Sites



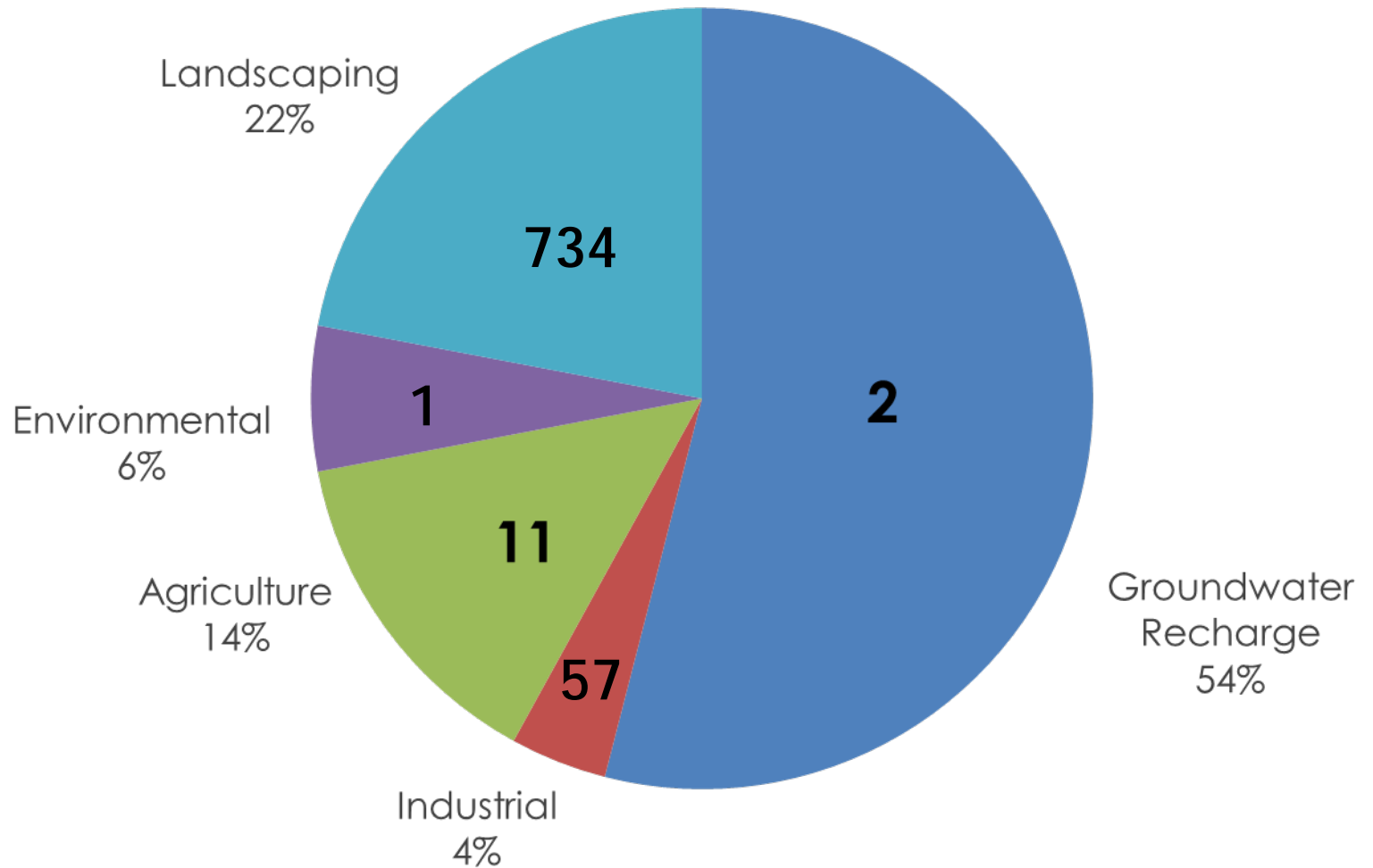


Recycled Water Usage



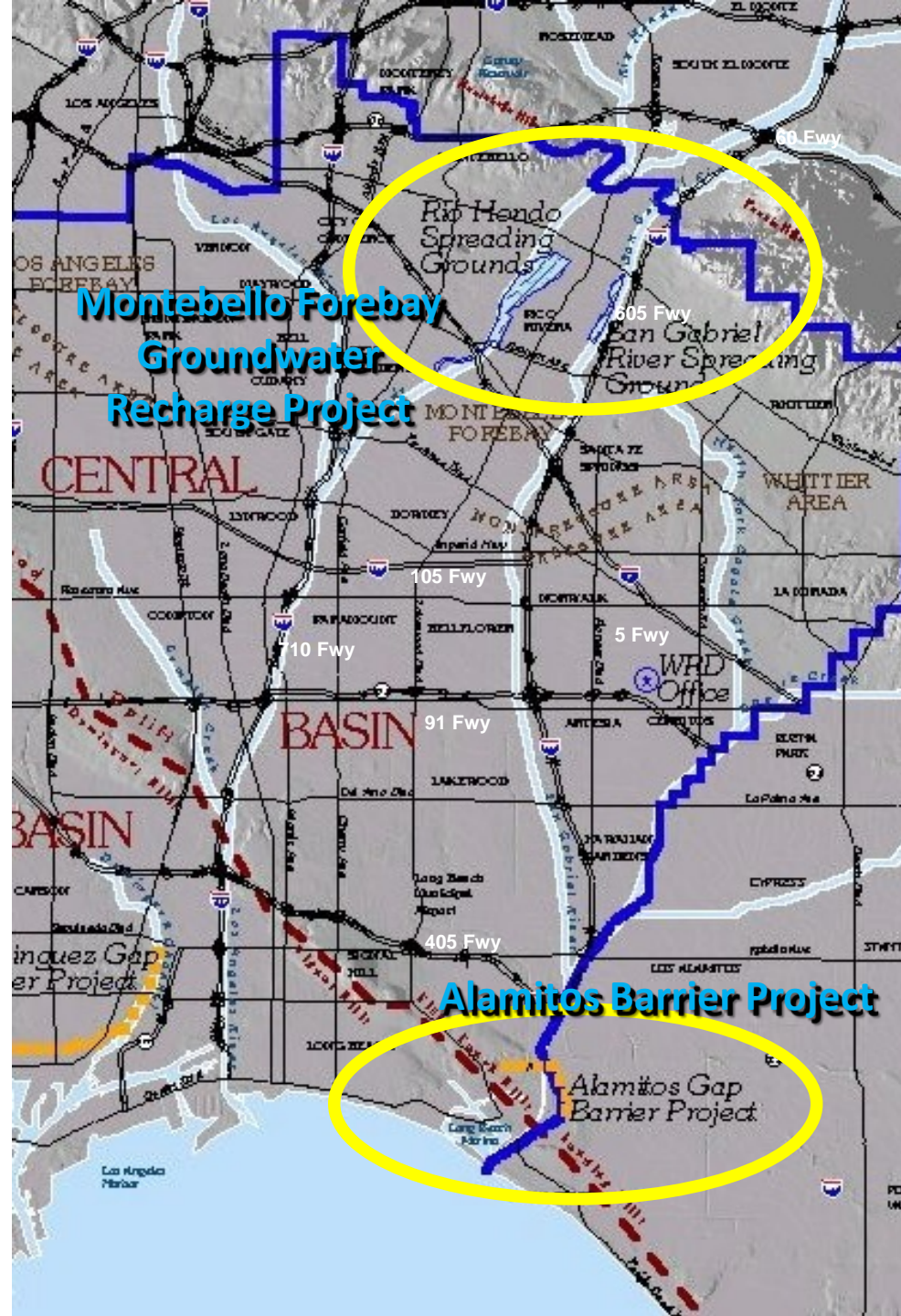


Distribution of Usage





Project Locations





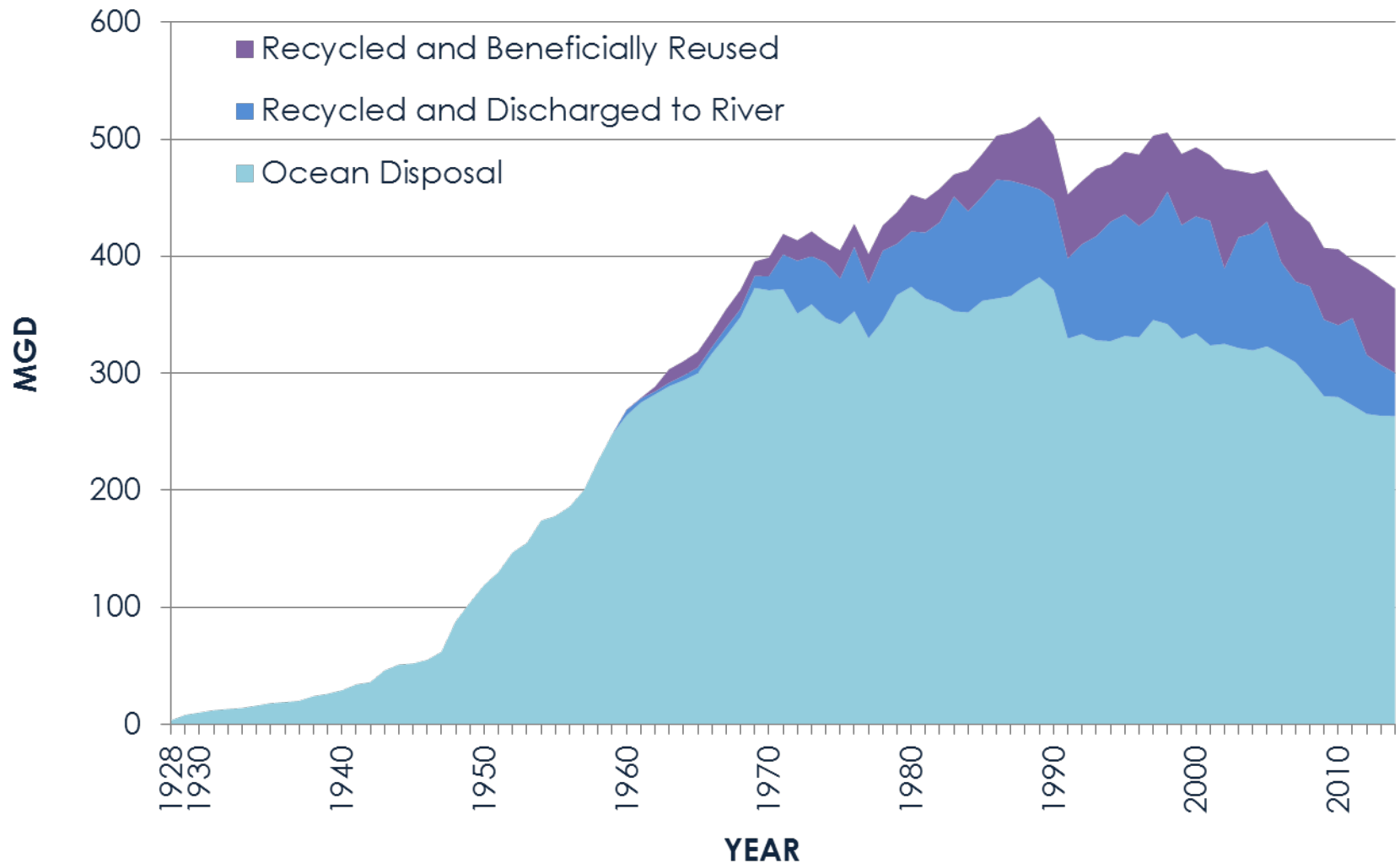
Montebello Forebay

- Oldest planned groundwater recharge project using recycled water in California
 - Since August 1962
- 1.9 Million AF of recycled water recharged
 - Tertiary treated
- Helped pave the way for all other recharge projects





Reclamation vs. Ocean Discharge





Why Aren't We At 100% Recycle?

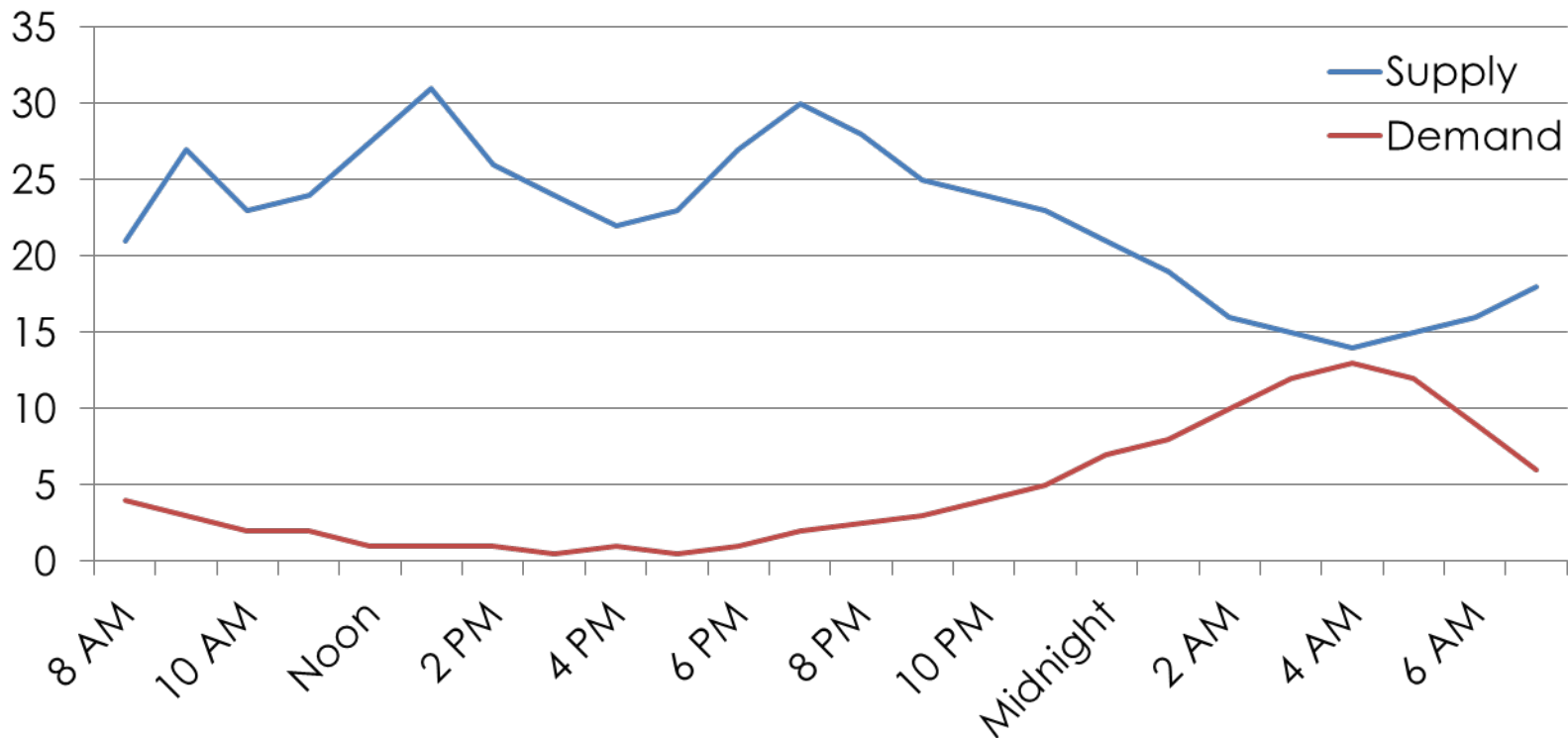




Daily Supply/Demand Offset



Daily WRP Supply and Demand





Seasonal Supply vs. Demand

Annual WRP Supply and Demand



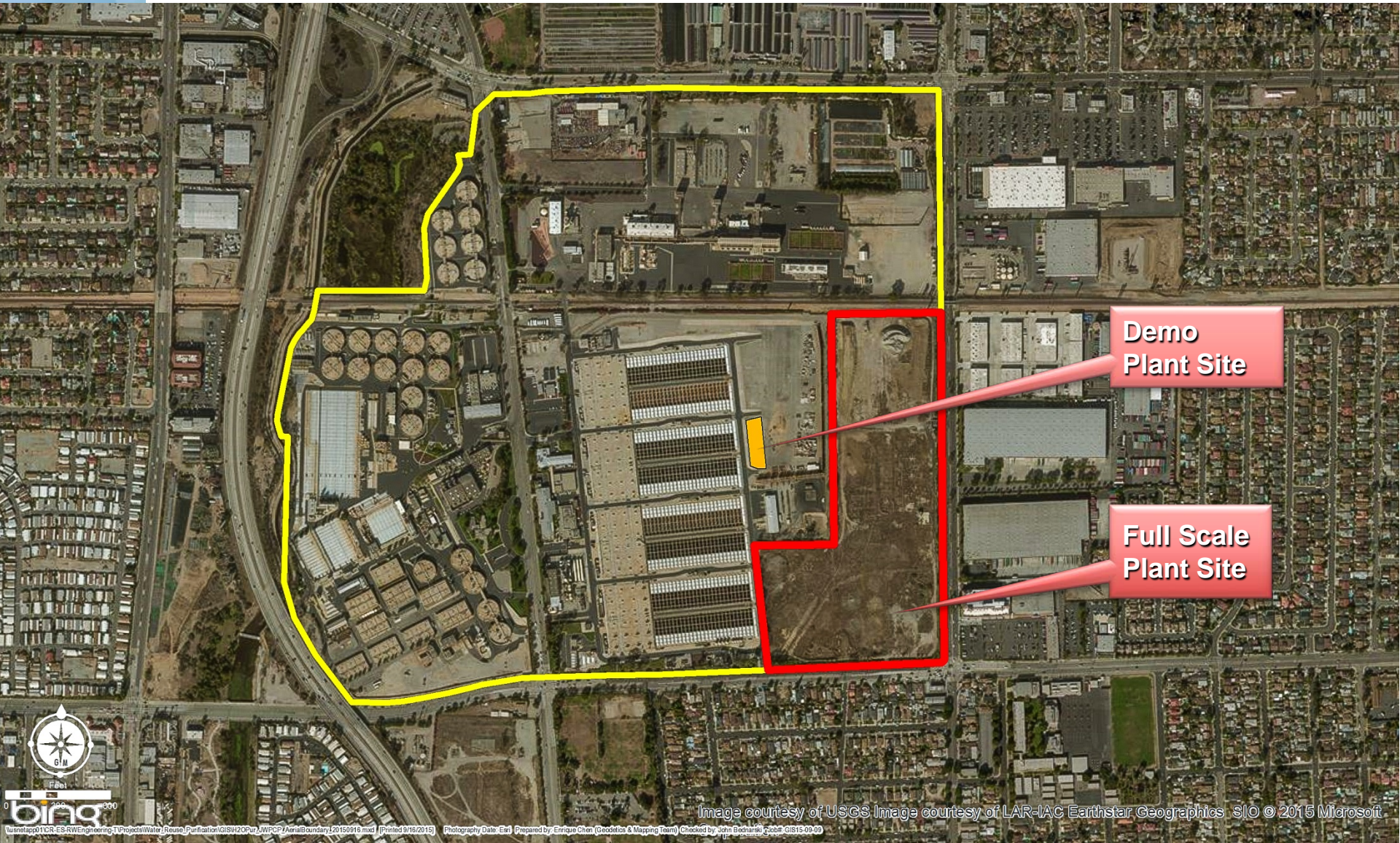


Planning for Recharge





Potential Project at JWPCP



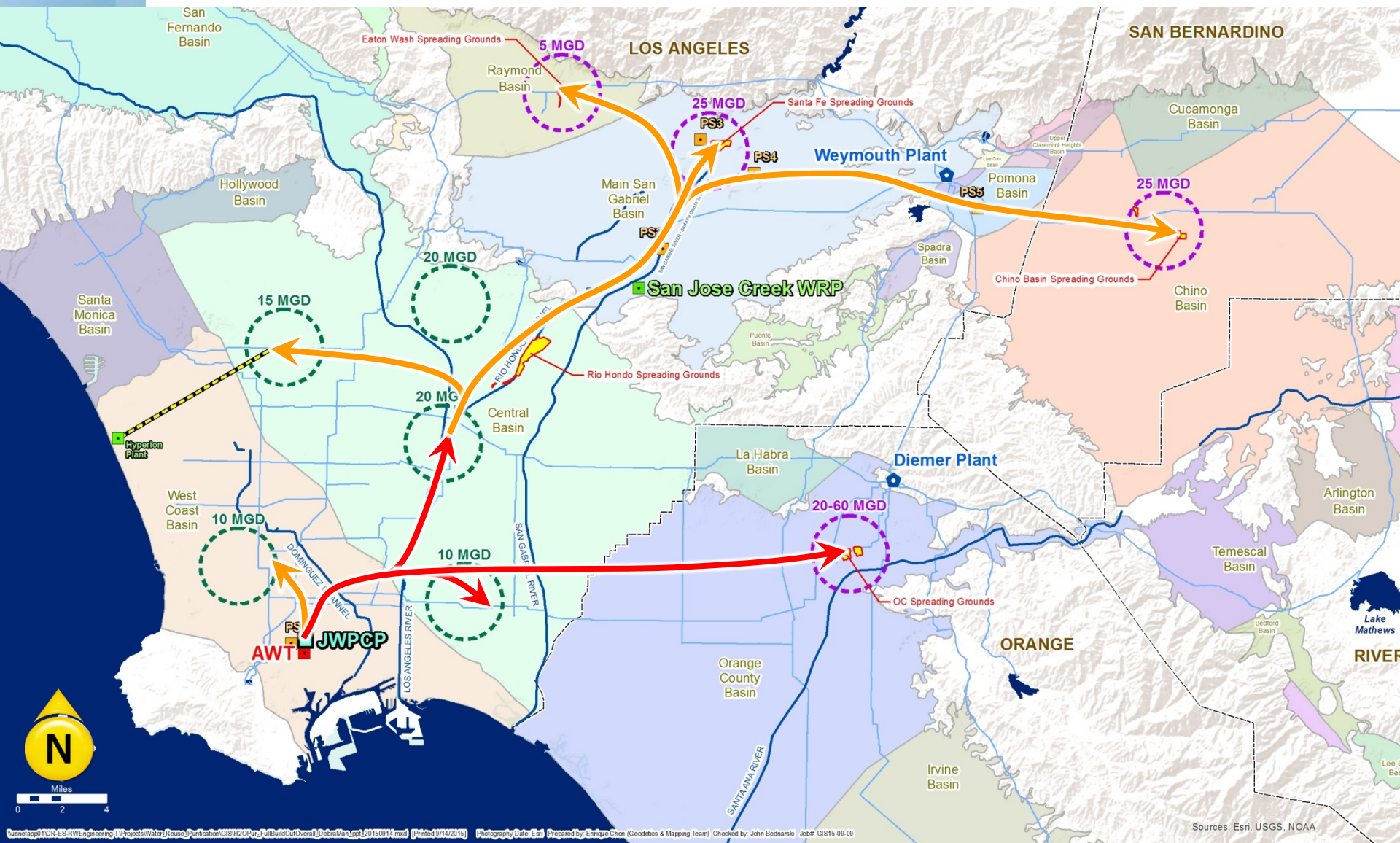
Demo
Plant Site

Full Scale
Plant Site



Image courtesy of USGS Image courtesy of LAR-IAC Earthstar Geographics SIO © 2015 Microsoft

\\mslapp01\CRS-ES&W\Engineering\Projects\Water_Sewer_Purification\GIS\H2OPur_WPCP\AerialBoundary20150919.mxd | Printed 9/16/2015 | Photography Date: Ear | Prepared by: Enrique Chen (Geodetics & Mapping Team) | Checked by: John Restrepo (GIS) | 9/16/2015





Next Steps

- November 2015 – Approval of an agreement by both the Metropolitan Water District and Sanitation Districts Boards
- 1 MGD demonstration project at JWPCP within two years
- Feasibility Study and Financial Plan of Larger Project
- First phase - 7-8 years to implementation



Questions

