



Recycled Water Project – Sharon Heights GCC

WaterReuse Association Meeting



May 13, 2016

Topics

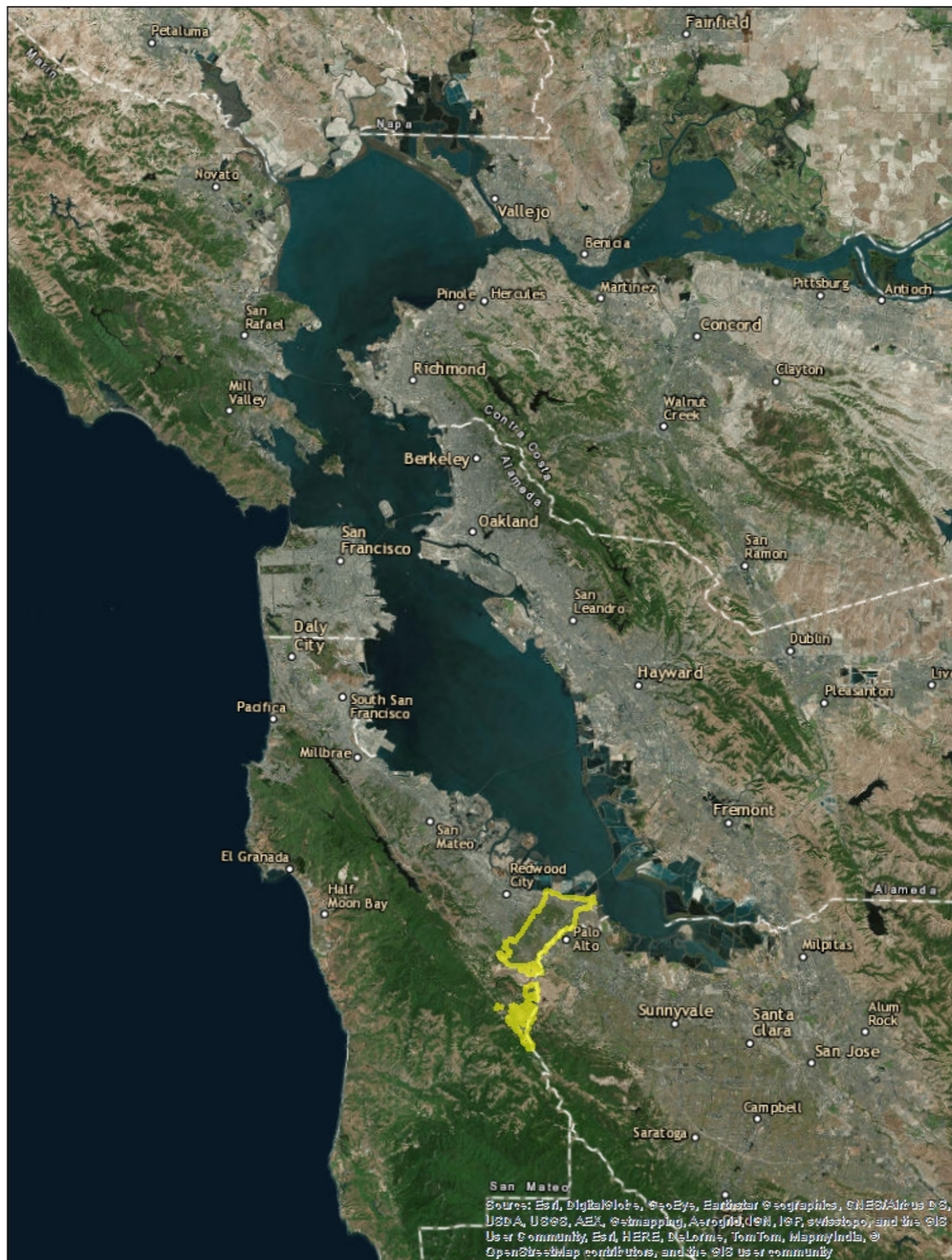
- * Overview of the *Recycled Water Project – Sharon Heights GCC*
- * Project Description
- * Anticipated Costs and Benefits of Project
- * Timeline and Current Status



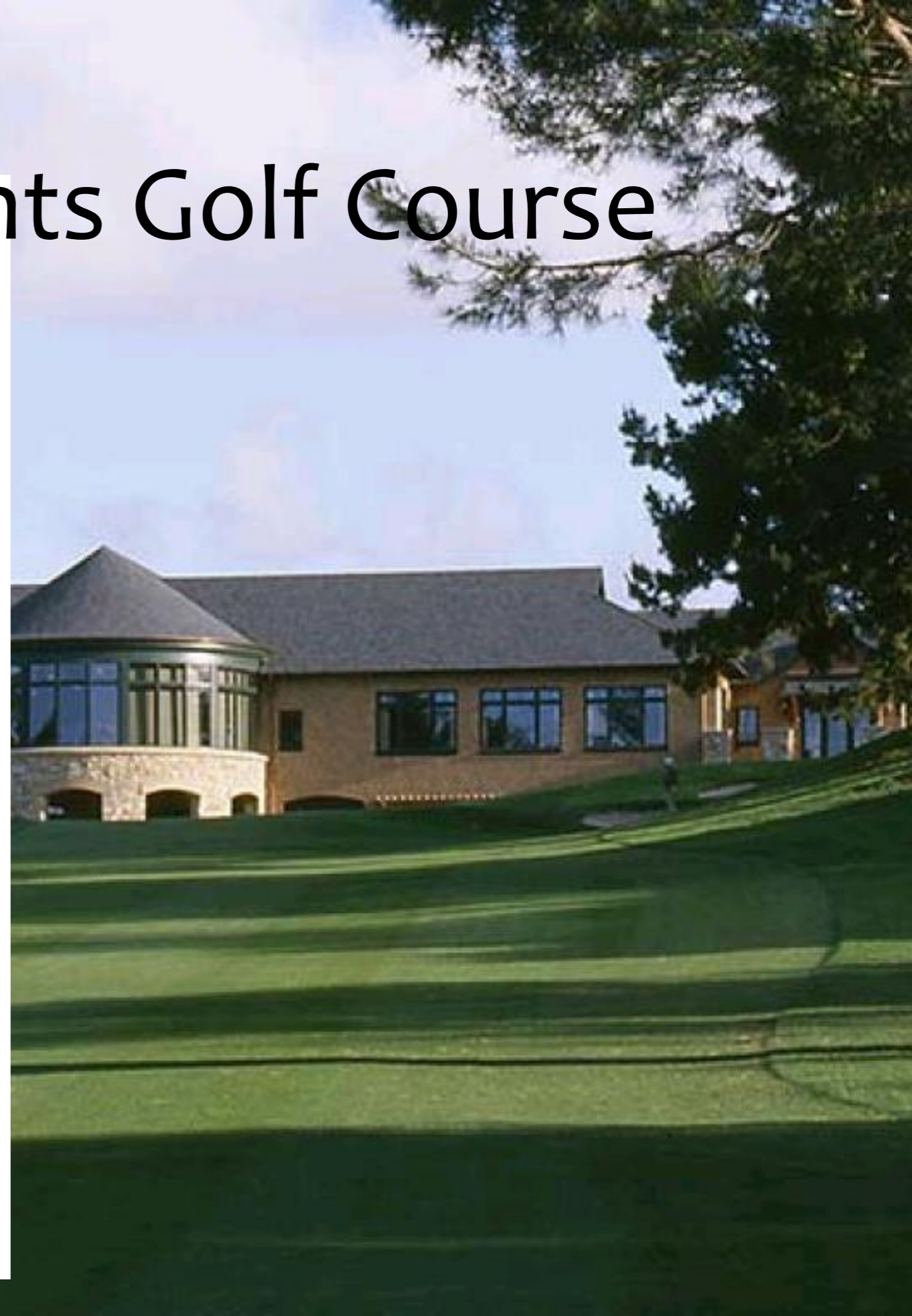
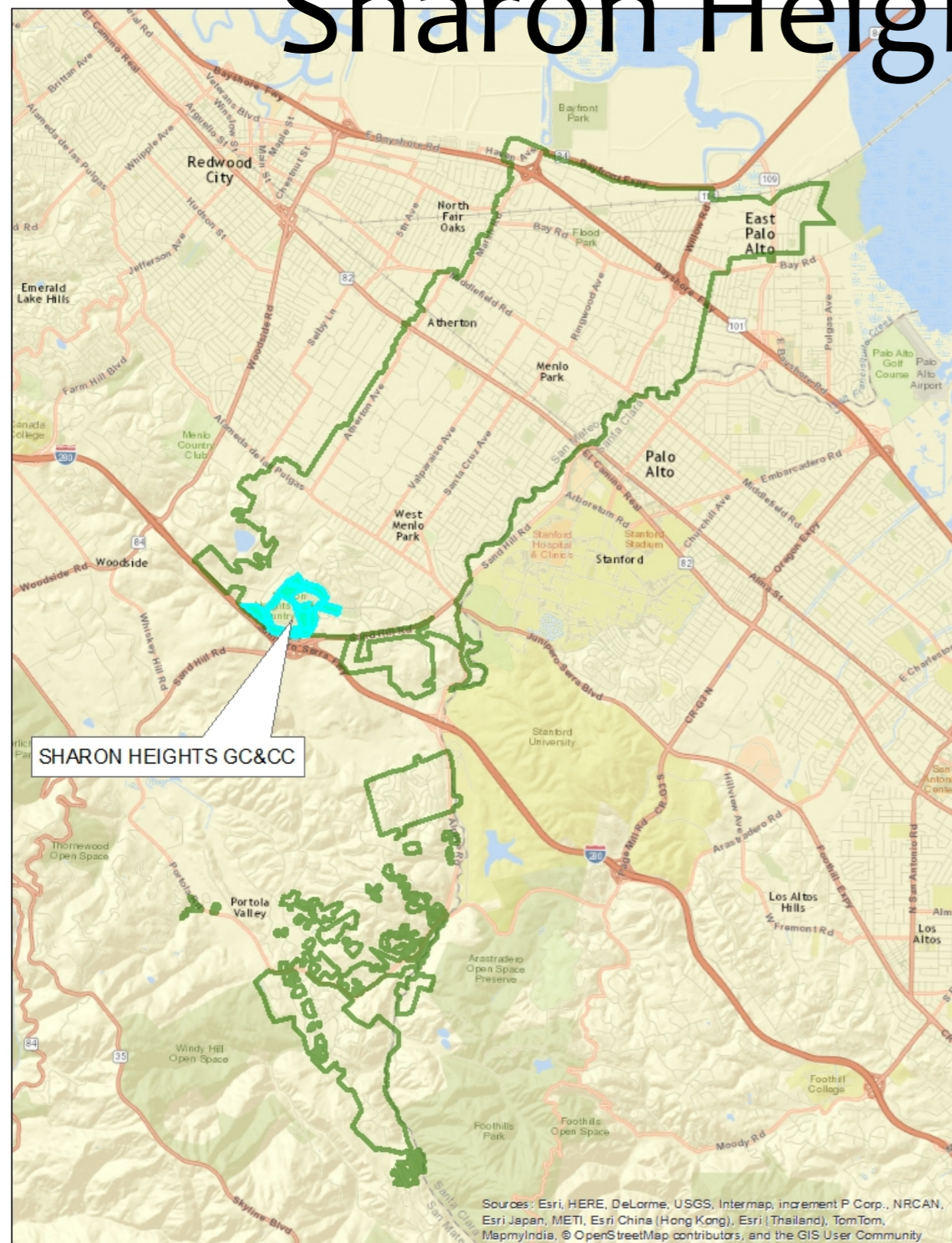
Recycled Water Project - Sharon Heights Overview



Menlo Park
Atherton
Portola Valley
Portions of
East Palo Alto
San Mateo
and Santa
Clara Counties



Sharon Heights Golf Course



200 miles of pipe



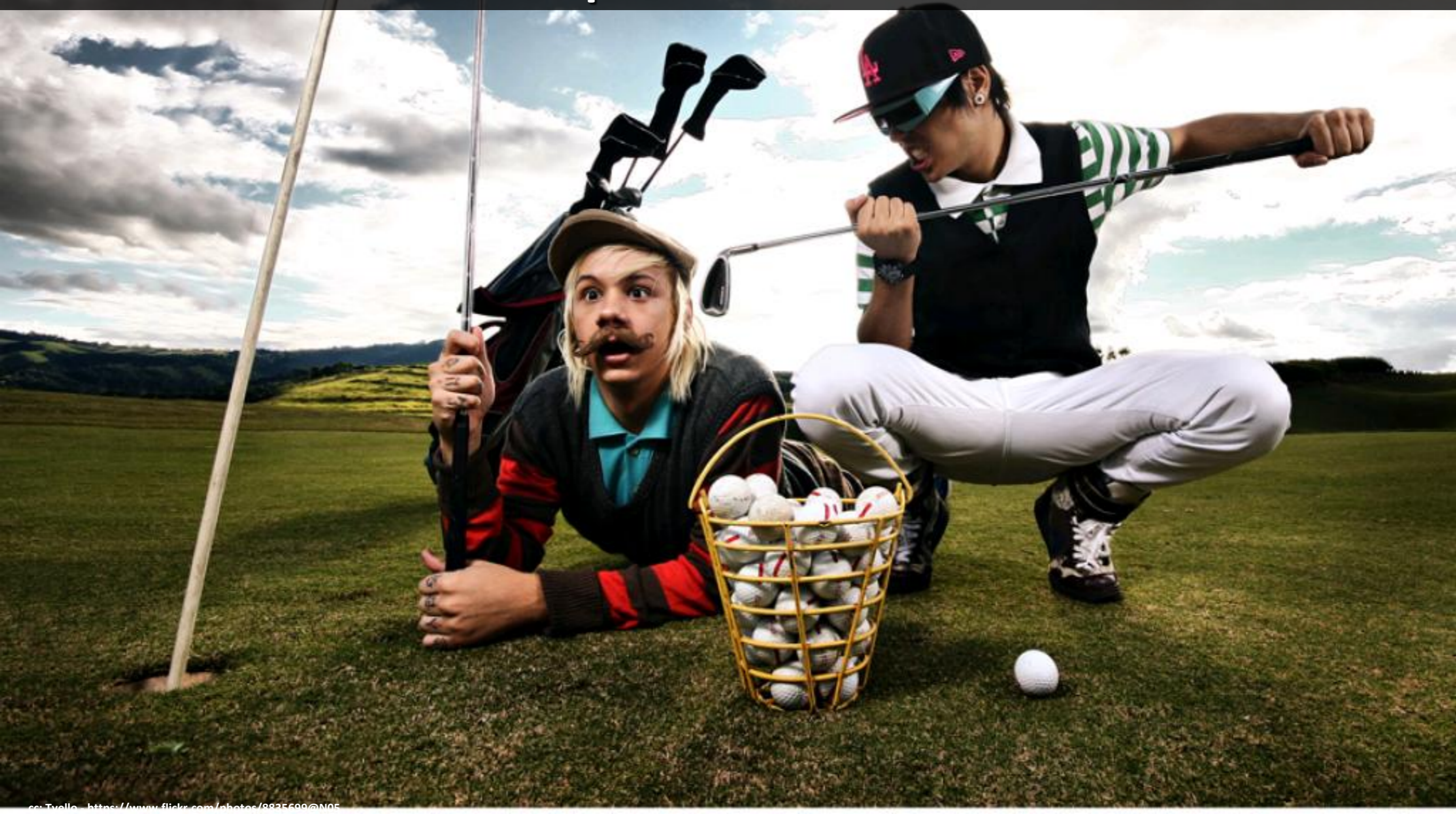


3.5 MGD

Sent to SVCW

West Bay & SHGCC

partners



152 AFY

Non-potable demand





Hetch Hetchy

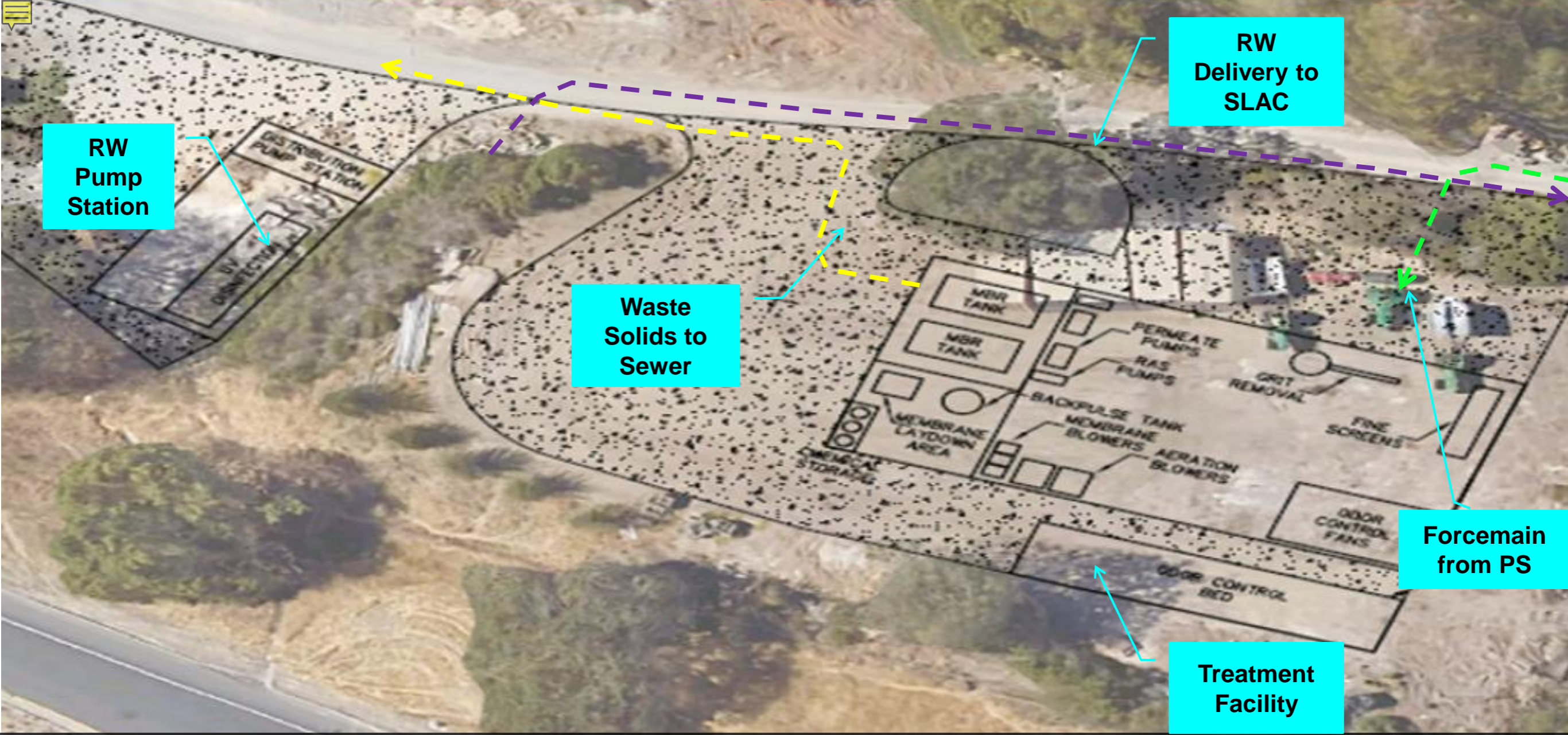
Project Description



A woman with blonde hair in a ponytail, wearing a red jacket and safety glasses, is working in a distillery. In the foreground, several bottles of Maker's Mark Whisky are lined up on a metal tray. The background shows industrial equipment and other workers. The text "0.5 MGD capacity" and "400,000 gpd peak" is overlaid on the image.

0.5 MGD capacity

400,000 gpd peak

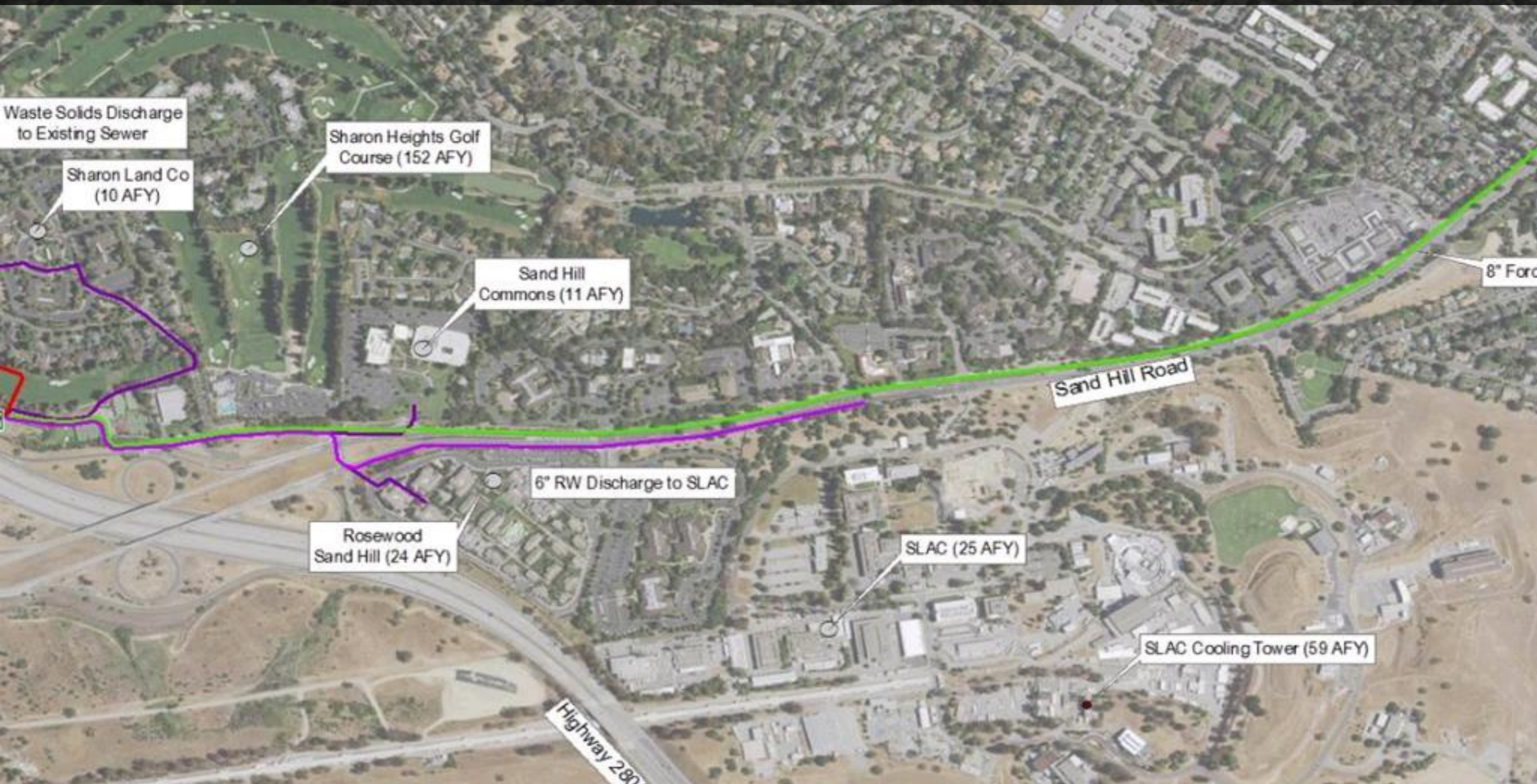


Phase I

Treatment Facility



Sandhill Road



Pipeline

0.2 0.4 Miles

Legend

WTP Treatment Plant

Site Potential

Customers

Industrial Customers

Discharge to Sewer

6" Recycled Water Discharge to SLAC

Phase II

Phase II

Phase II

Phase II

Phase II

Phase II

Phase II

Phase II

Phase II

Phase II

Phase II

Phase II

Phase II

Phase II

Phase II

Phase II

Phase II

Phase II

Phase II

Phase II

Phase II

Phase II

Phase II

Phase II

Phase II

Phase II

Phase II

Phase II

Phase II

Phase II

Phase II

Phase II

Phase II

Phase II

Phase II

Phase II

Phase II

Phase II

Phase II

Phase II

Phase II

Phase II

Phase II

Phase II

Phase II

Phase II

Phase II

Phase II

Phase II

Phase II

Phase II

Phase II

Phase II

Phase II

Phase II

Phase II

Phase II

Phase II

Phase II

Phase II

Phase II

Phase II

Phase II

Phase II

Phase II

Phase II

Phase II

Phase II

Phase II

Phase II

Phase II

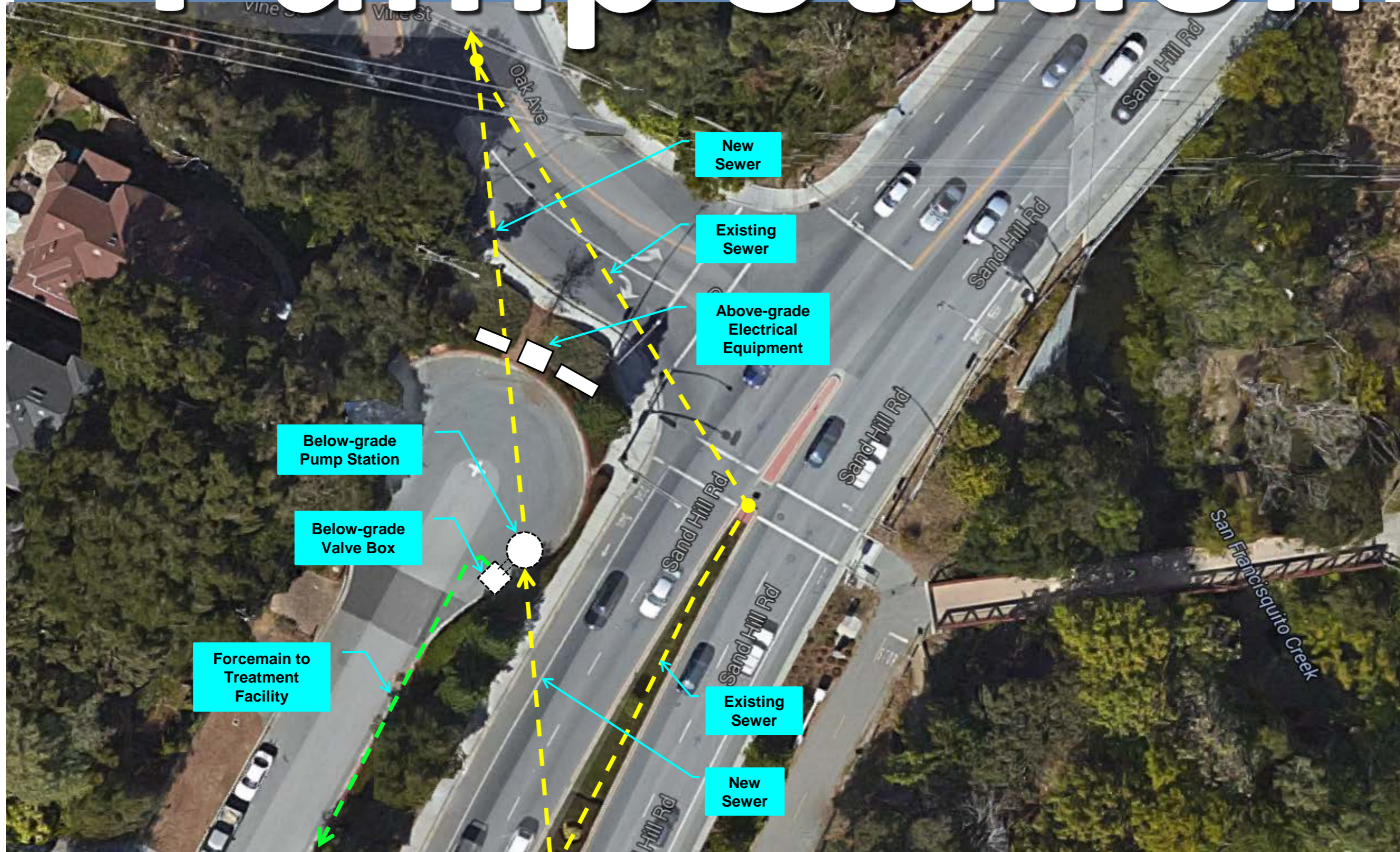
Phase II

Phase II

Phase II

Phase II

Pump Station





SLAC

Phase II



84 AFY



HOA's

Phase III



44 AFY

Costs & Benefits





Sharon Heights only

Cap X \$15.6M,
O&M \$233k/yr,
Unit cost \$6,100/AF



Project Benefits



152 AFY

Recycled Water





New water supply

Use Less Potable Water





Reliability



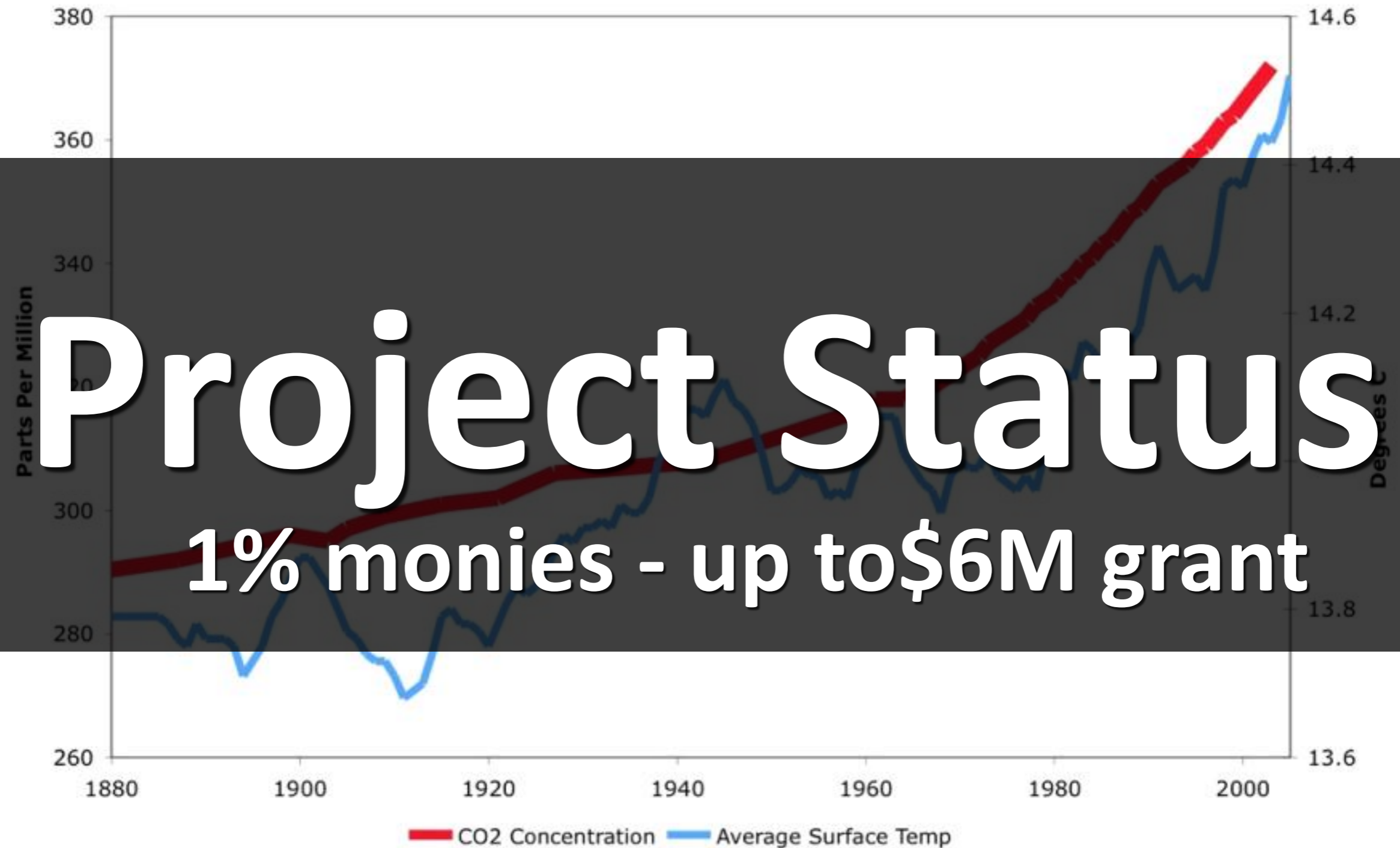
Saves Energy

20 by 2020

water conservation goals



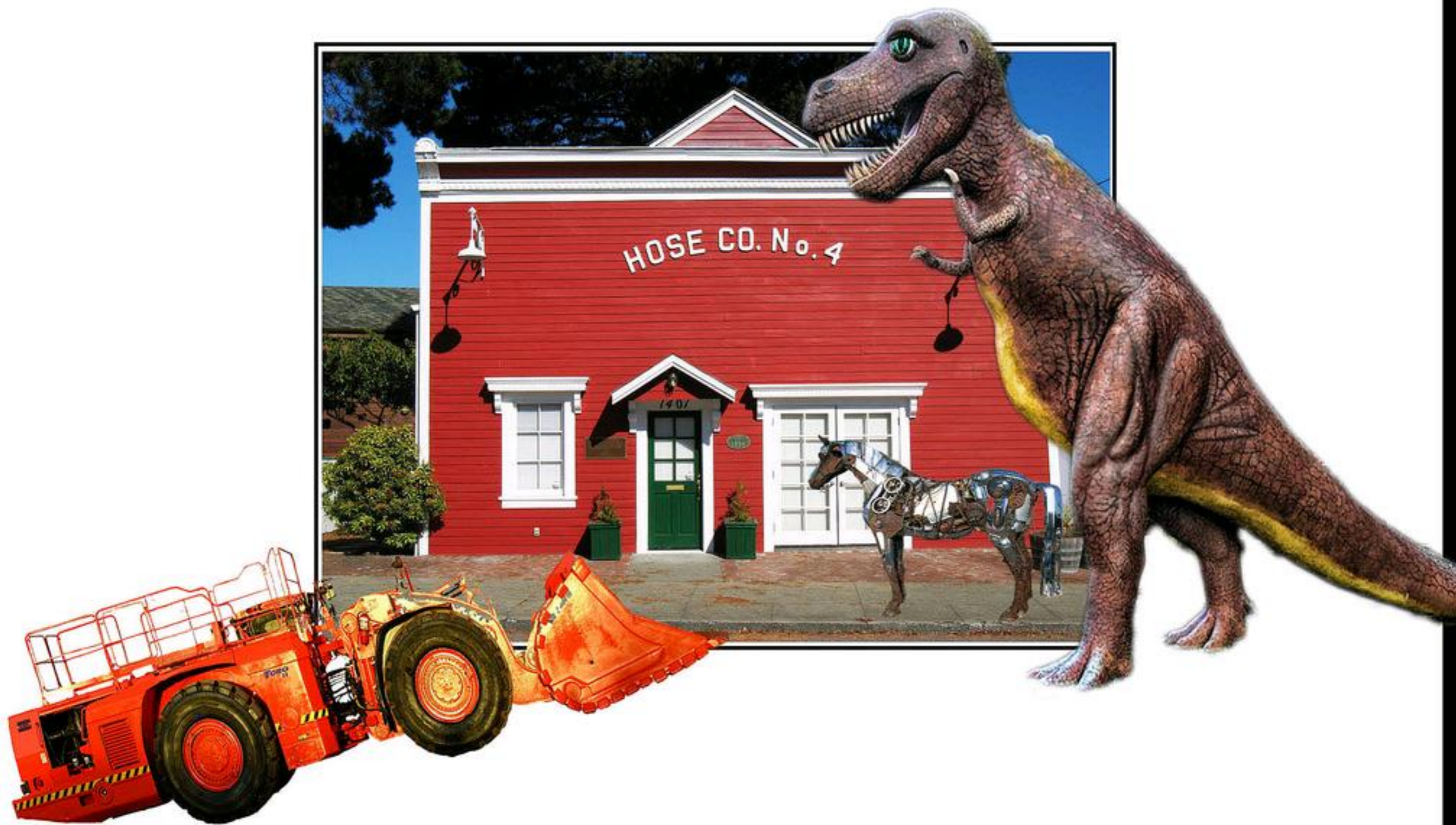
CO2 Concentration and Surface Temperature





Packed House

Timeline





Design 2016

Phase I

2017

Irrigate



Phase II - 2018+





Phase III - 2019+

Questions



For more information Go to:

<https://westbaysanitary.org/services/recycled-water>